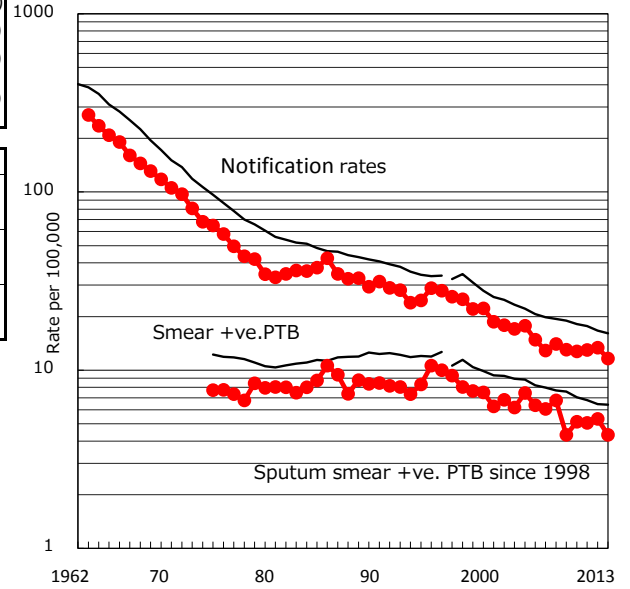


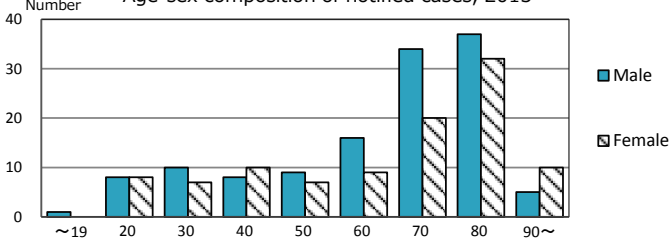
TB statistics in 2013 (Population in Tochigi 1,985,860)	
Among newly registered : (Japan)	
Foreign borns	22 9.5% (5.0%)
TB cases with homeless history	0 0.0% (1.6%)
Male aged 35-59,without job and receiveing public assistance	0 0.0% (10.8%)

Trends	'09	'10	'11	'12	'13
Notified cases	261	256	260	266	231
Rate per 100,000 population	13.0	12.8	13.0	13.4	11.6
Sputum smear +ve. pul.cases	87	103	101	106	86
Rate per 100,000 population	4.3	5.1	5.0	5.3	4.3
Latent Tuberculosis Infection	18	36	62	53	73
Rate per 100,000 population	0.9	1.8	3.1	2.7	3.7

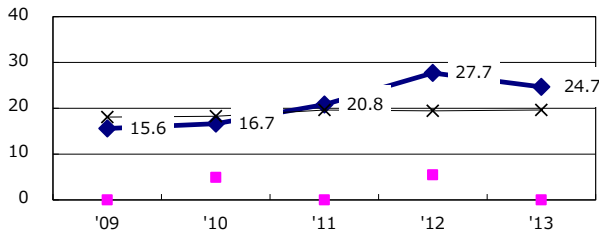
Trends of TB notification rates, all forms and smear +ve.PTB



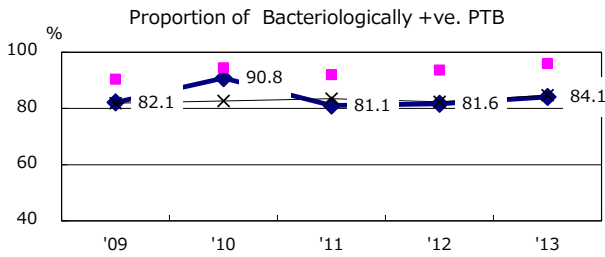
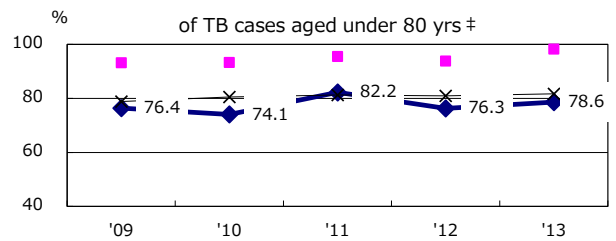
Age-sex composition of notified cases, 2013



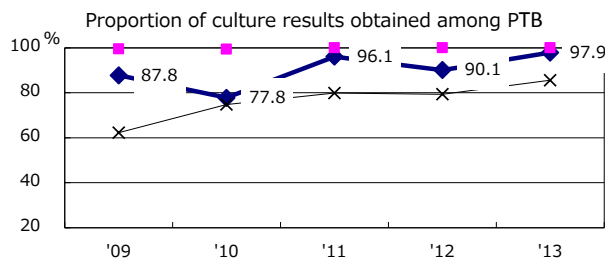
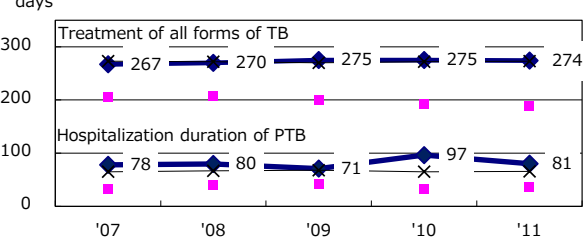
Proportion of cases with total diagnosis delay(> 3 mths) among symptomatic PTB



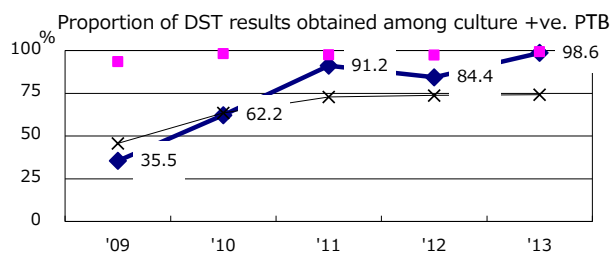
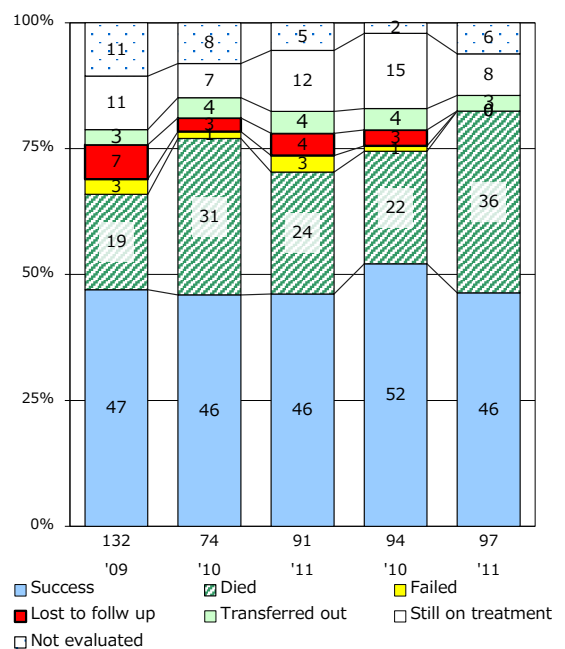
Proportion of TX with HRZ-E/S among all forms of TB cases aged under 80 yrs †



Median duration of treatment of all forms and hospitalization among PTB



Treatment outcomes of new sputum smear +ve.TB



PTB : pumonary TB

† Excluding unknown delay(%)

'09 '10 '11 '12 '13

‡ Excluding unknown Tx(%)

'09 '10 '11 '12 '13

50.3 16.9 0.0 11.9 2.5

4.2 4.2 1.2 1.7 1.4