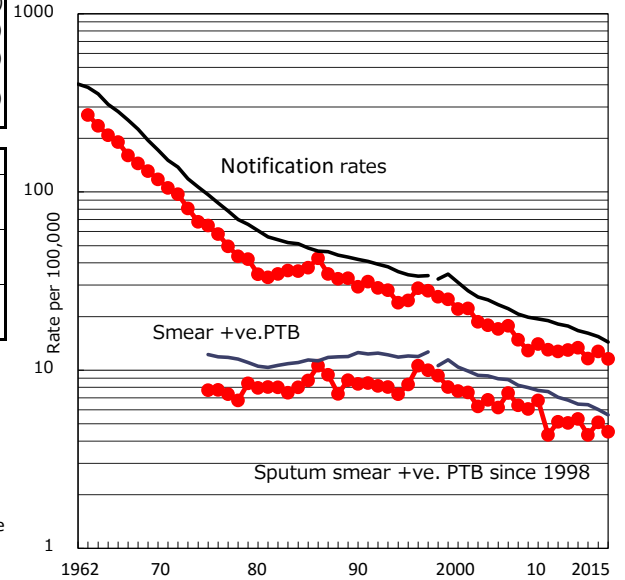


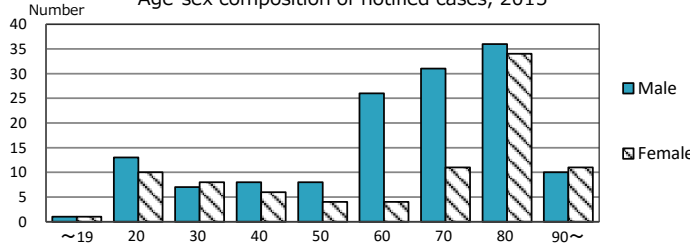
TB statistics in 2015	(Population in Tochigi	1,974,671)
Among newly notified :		(Japan)
Foreign borns	27	11.8% (6.4%)
TB cases with homeless history	1	0.4% (0.9%)
Male aged 35-59, without job and receiving public assistance	0	0.0% (9.0%)

Trends	'11	'12	'13	'14	'15
Notified cases	260	266	231	252	229
Rate per 100,000 population	13.0	13.4	11.6	12.7	11.6
Sputum smear +ve. PTB	101	106	86	101	89
Rate per 100,000 population	5.0	5.3	4.3	5.1	4.5
Latent Tuberculosis Infection	62	53	73	76	51
Rate per 100,000 population	3.1	2.7	3.7	3.8	2.6

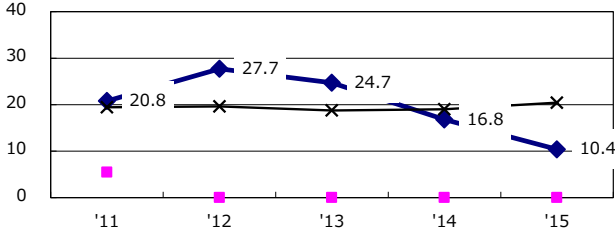
Trends of TB notification rates, all forms and smear +ve.PTE



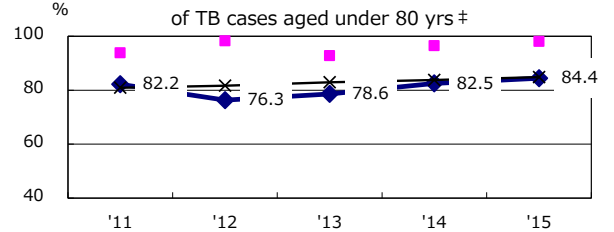
Age-sex composition of notified cases, 2015



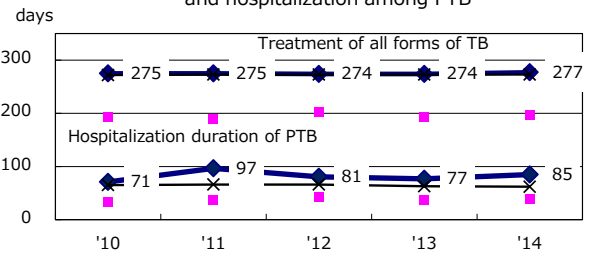
Proportion of cases with total diagnosis delay (> 3 mths) among symptomatic PTB*



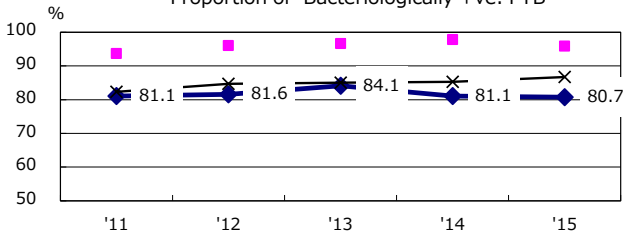
Proportion of TX with HRZ-E/S among all forms of TB cases aged under 80 yrs †



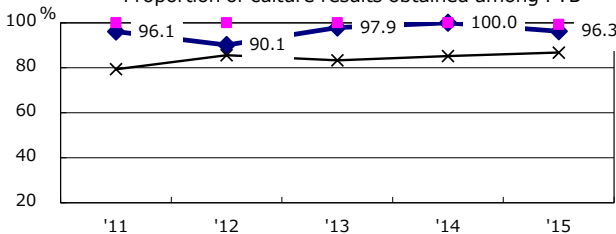
Median duration of treatment of all forms and hospitalization among PTB



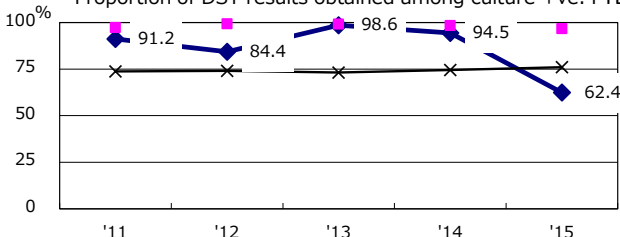
Proportion of Bacteriologically +ve. PTB



Proportion of culture results obtained among PTB

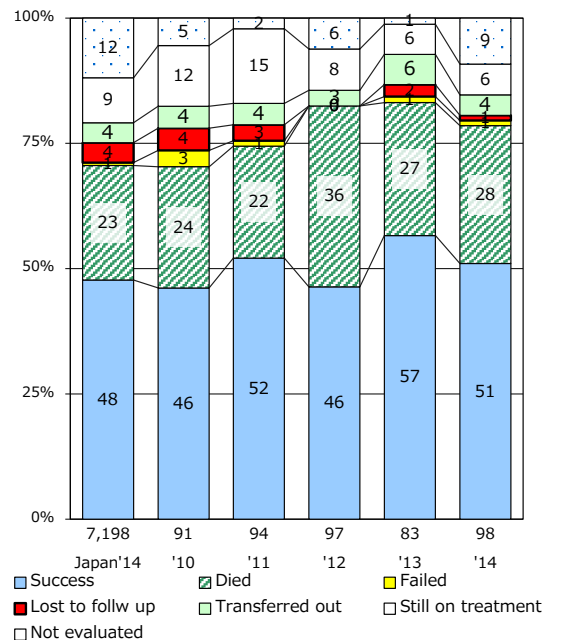


Proportion of DST results obtained among culture +ve. PTB



◆ Tochigi ■ Best prefec./city × Japan

Treatment outcomes of new sputum smear +ve.TB



PTB : pulmonary TB

† Excluding unknown delay(%)	'11	'12	'13	'14	'15
	0.0	11.9	2.5	18.5	44.2

‡ Excluding unknown Tx(%)	'11	'12	'13	'14	'15
	1.2	1.7	1.4	3.5	2.2