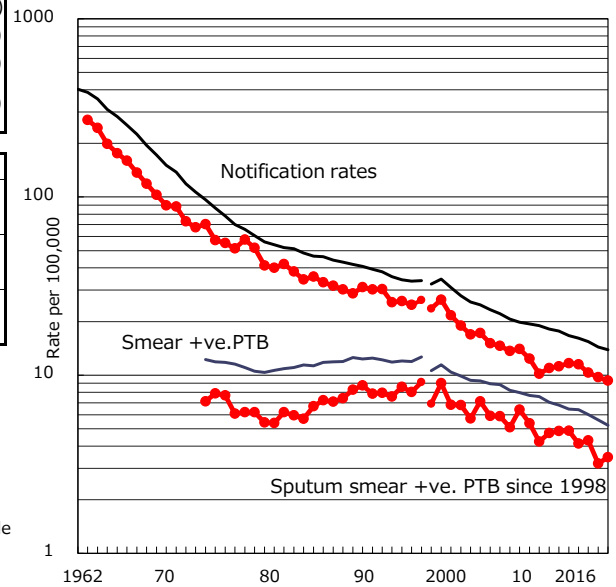


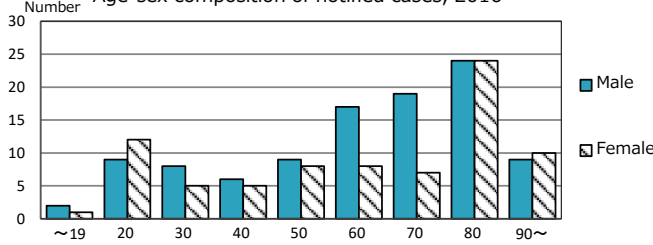
TB statistics in 2016 (Population in Gunma		1,967,292)
Among newly notified :		(Japan)
Foreign borns	32	17.5% (7.6%)
TB cases with homeless history	0	0.0% (1.0%)
Male aged 35-59,without job and receiving public assistance	1	4.3% (7.7%)

Trends	'12	'13	'14	'15	2016
Notified cases	232	228	204	192	183
Rate per 100,000 population	11.6	11.5	10.3	9.7	9.3
Sputum smear +ve. PTB	97	82	85	63	68
Rate per 100,000 population	4.9	4.1	4.3	3.2	3.5
Latent Tuberculosis Infection	56	56	74	79	81
Rate per 100,000 population	2.8	2.8	3.7	4.0	4.1

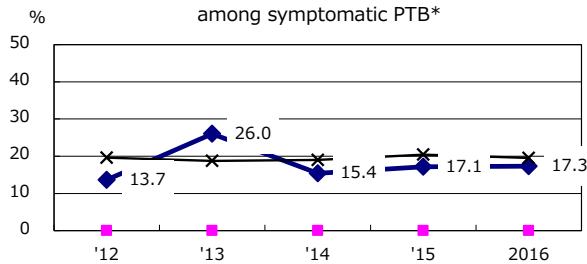
Trends of TB notification rates, all forms and smear +ve.PTB



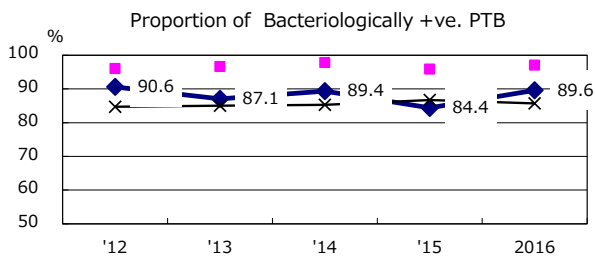
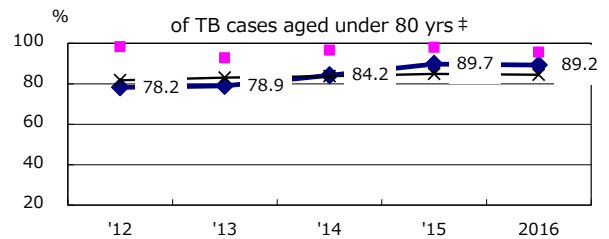
Age-sex composition of notified cases, 2016



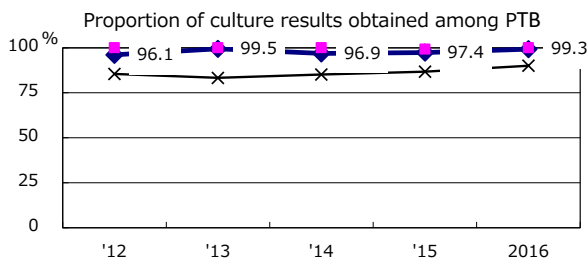
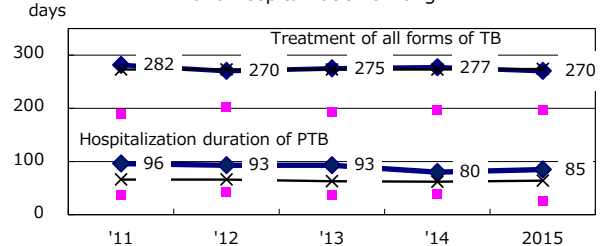
Proportion of cases with total diagnosis delay(> 3 mths) among symptomatic PTB*



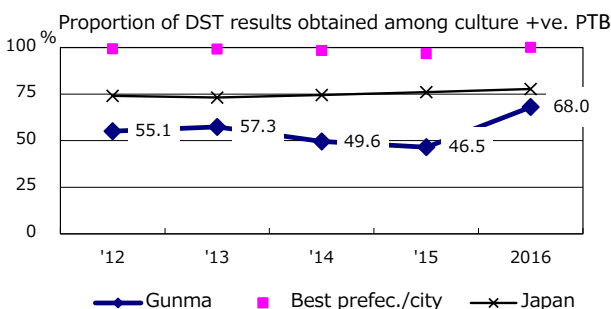
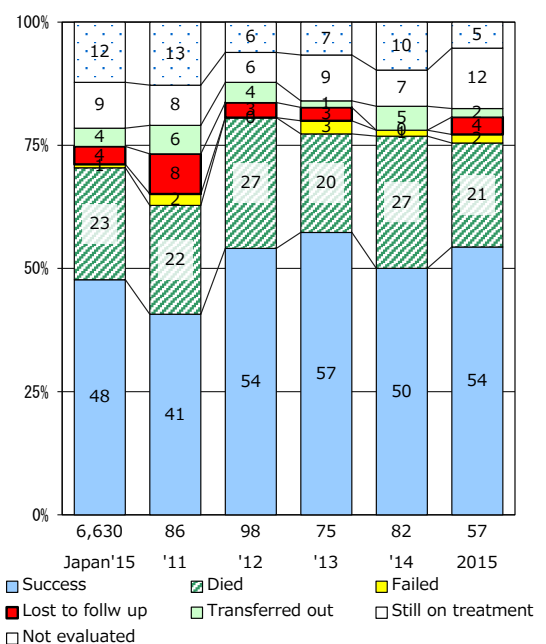
Proportion of TX with HRZ-E/S among all forms of TB cases aged under 80 yrs †



Median duration of treatment of all forms and hospitalization among PTB



Treatment outcomes of new sputum smear +ve.TB



PTB : pulmonary TB

† Excluding unknown delay(%)	'12	'13	'14	'15	2016
	4.8	8.2	4.7	6.3	11.7

‡ Excluding unknown Tx(%)	'12	'13	'14	'15	2016
	4.3	3.8	2.4	2.7	4.3