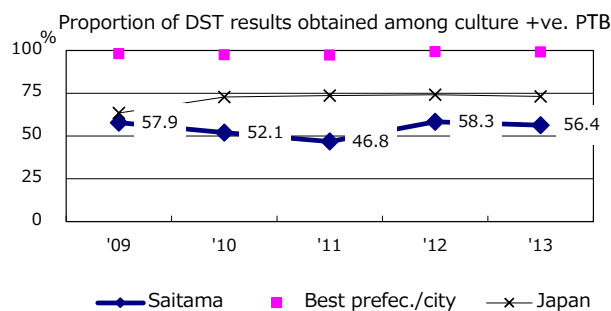
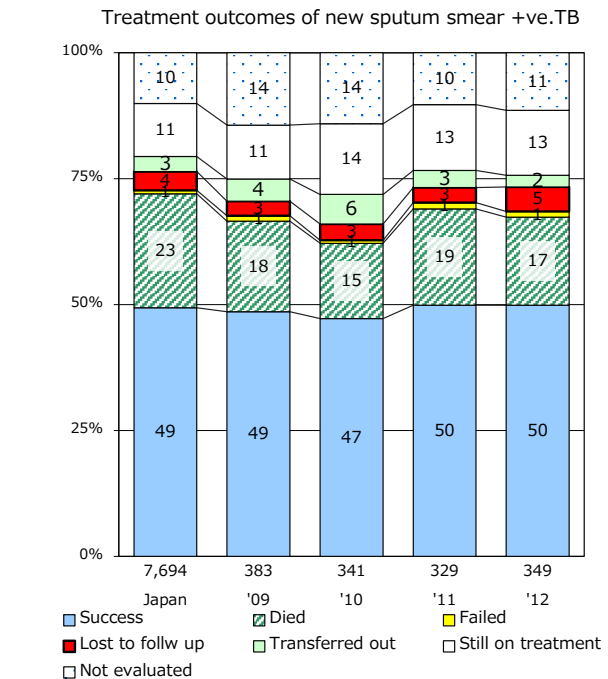
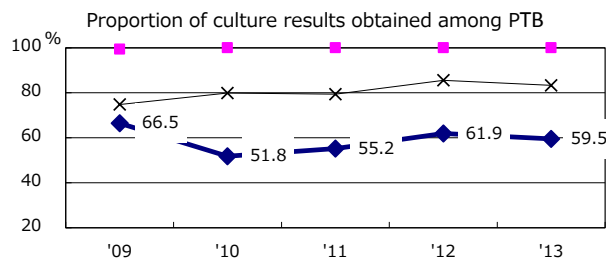
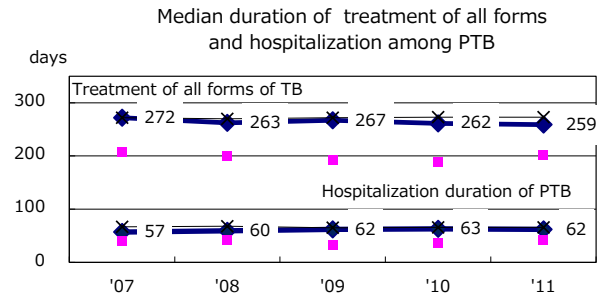
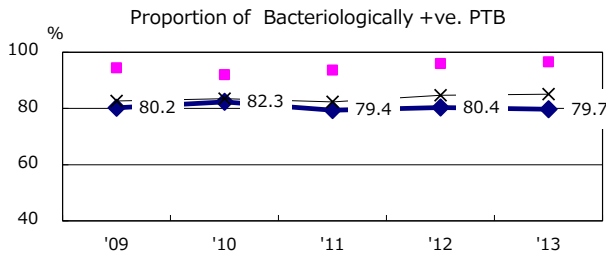
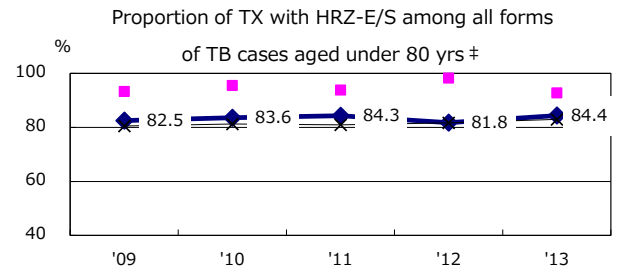
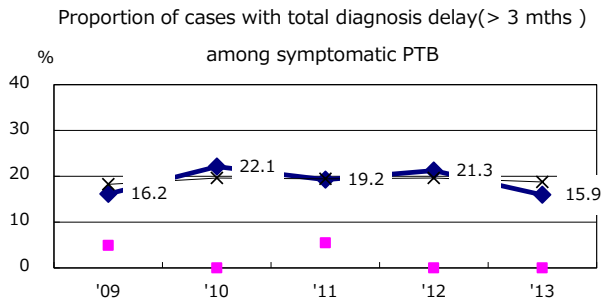
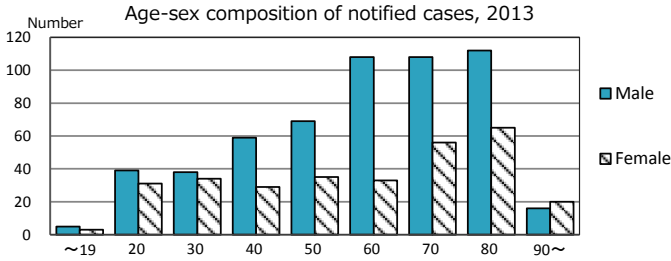
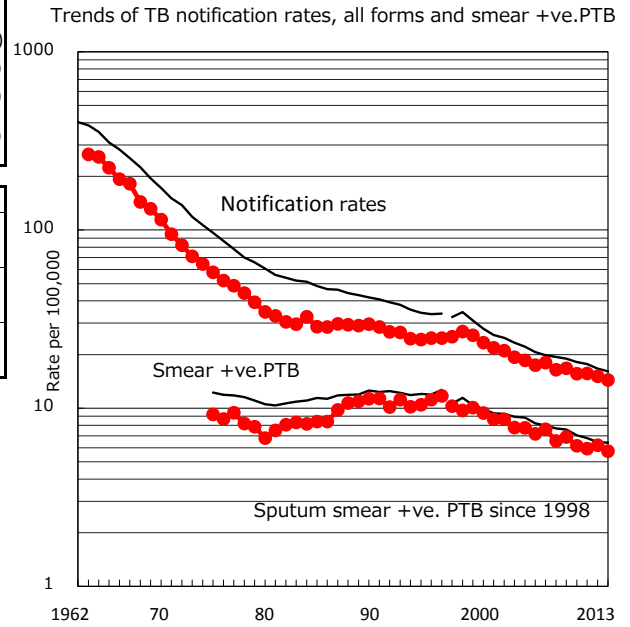


TB statistics in 2013 (Population in Saitama 5,970,386)	
Among newly registered : (Japan)	
Foreign borns	62 7.2% (5.0%)
TB cases with homeless history	7 0.8% (1.6%)
Male aged 35-59,without job and receiveing public assistance	6 3.6% (10.8%)

Trends	'09	'10	'11	'12	'13
Notified cases	987	929	935	902	860
Rate per 100,000 population	16.7	15.6	15.7	15.1	14.4
Sputum smear +ve. pul.cases	407	366	354	369	342
Rate per 100,000 population	6.9	6.1	5.9	6.2	5.7
Latent Tuberculosis Infection	207	223	548	436	376
Rate per 100,000 population	3.5	3.7	9.2	7.3	6.3



PTB : pumonary TB

† Excluding unknown delay(%)	'09	'10	'11	'12	'13
	46.1	50.2	44.9	49.6	54.4

‡ Excluding unknown Tx(%)	'09	'10	'11	'12	'13
	4.3	5.6	3.2	2.4	6.0