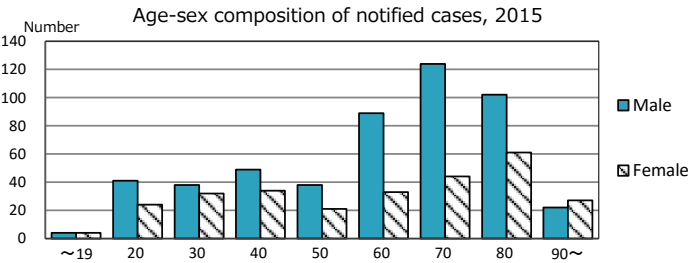
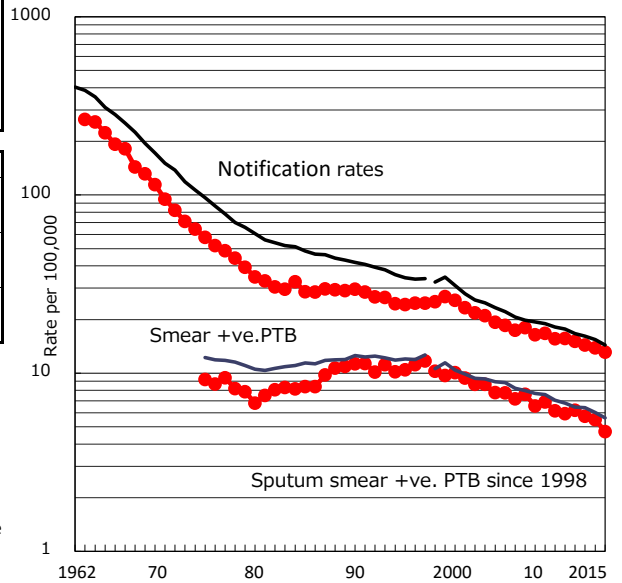


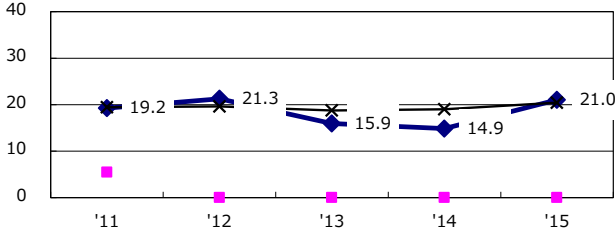
TB statistics in 2015 Among newly notified : Foreign borns TB cases with homeless history Male aged 35-59, without job and receiving public assistance	(Population in Saitama (Japan) 62 7.9% (6.4%) 5 0.6% (0.9%) 5 4.0% (9.0%)	5,992,804)
---	--	-------------

Trends	'11	'12	'13	'14	'15
Notified cases	935	902	860	830	787
Rate per 100,000 population	15.7	15.1	14.4	13.9	13.1
Sputum smear +ve. PTB	354	369	342	328	282
Rate per 100,000 population	5.9	6.2	5.7	5.5	4.7
Latent Tuberculosis Infection	548	436	376	413	372
Rate per 100,000 population	9.2	7.3	6.3	6.9	6.2

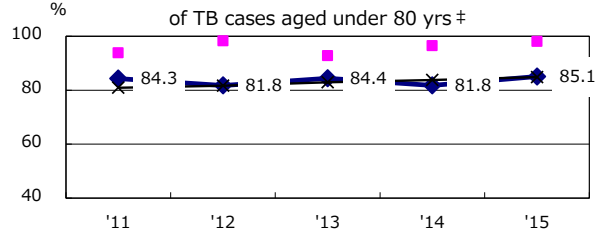
Trends of TB notification rates, all forms and smear +ve. PTB



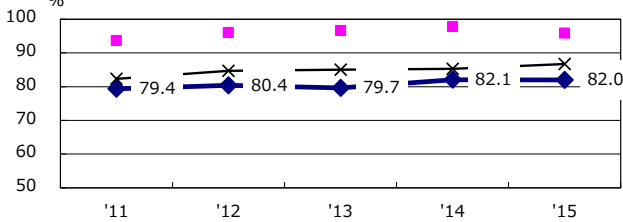
Proportion of cases with total diagnosis delay (> 3 mths) among symptomatic PTB*



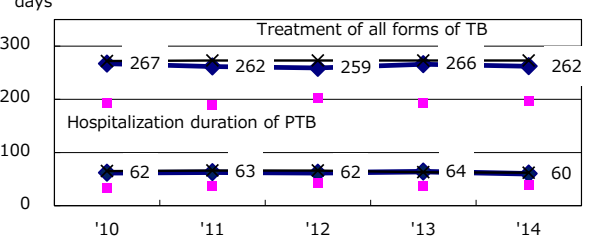
Proportion of TX with HRZ-E/S among all forms of TB cases aged under 80 yrs †



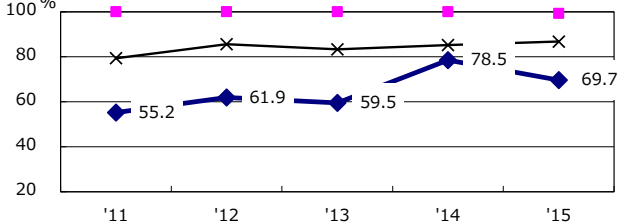
Proportion of Bacteriologically +ve. PTB



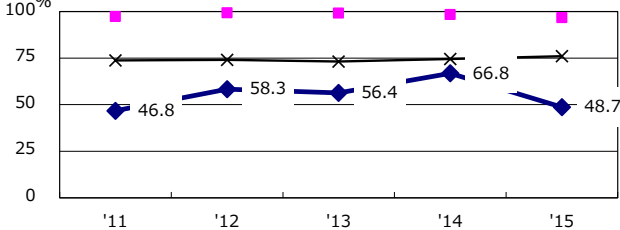
Median duration of treatment of all forms and hospitalization among PTB



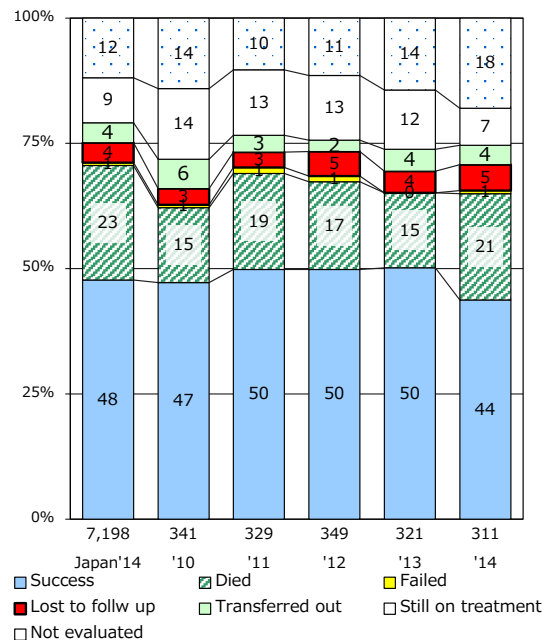
Proportion of culture results obtained among PTB



Proportion of DST results obtained among culture +ve. PTB



Treatment outcomes of new sputum smear +ve. TB



PTB : pulmonary TB

† Excluding unknown delay(%)	'11	'12	'13	'14	'15
	44.9	49.6	54.4	60.9	70.7

‡ Excluding unknown Tx(%)	'11	'12	'13	'14	'15
	3.2	2.4	6.0	1.4	4.3