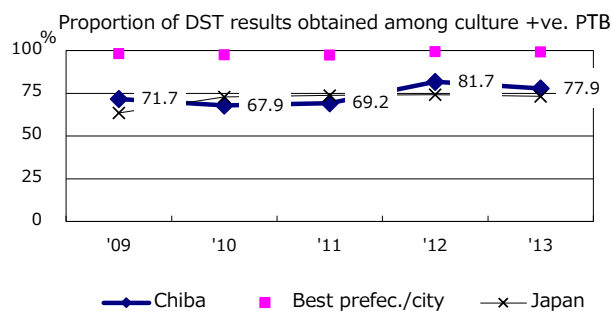
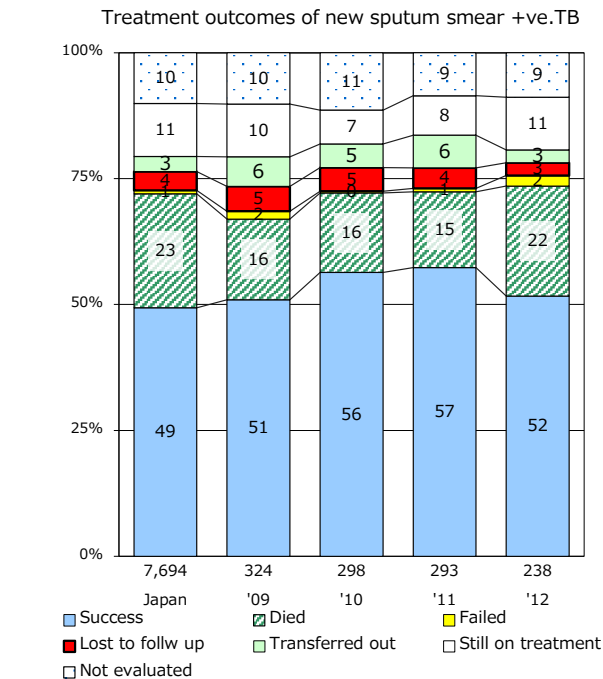
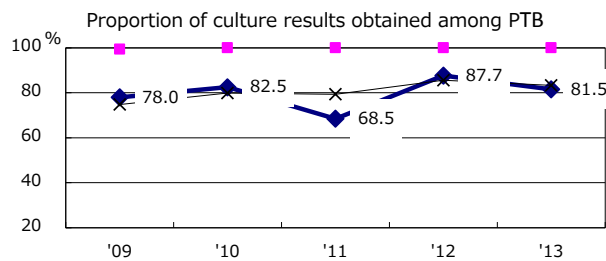
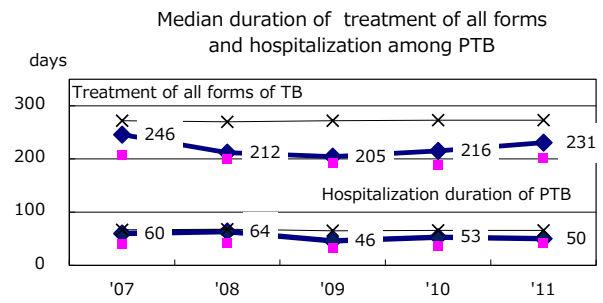
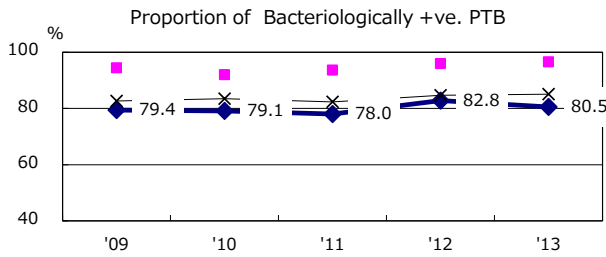
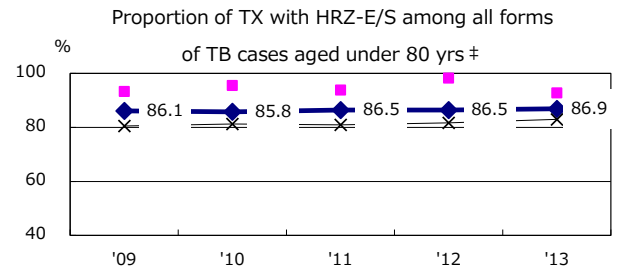
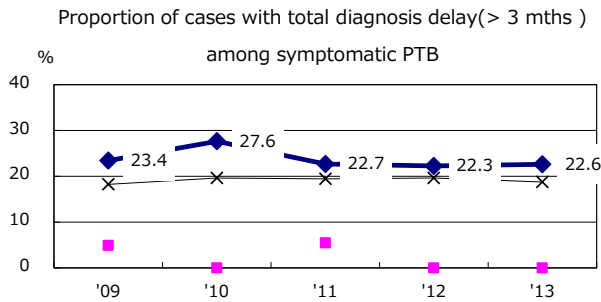
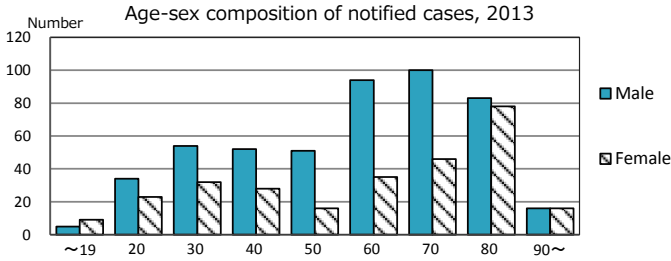
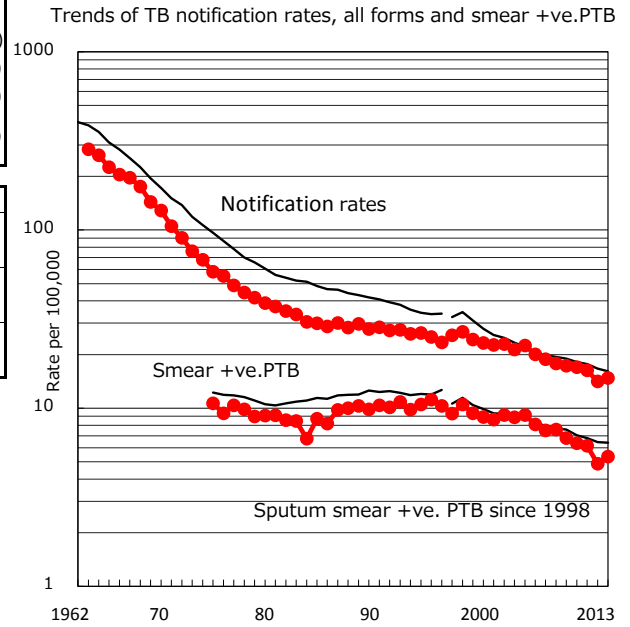


TB statistics in 2013 (Population in Chiba		5,228,268)
Among newly registered : (Japan)		
Foreign borns	46	6.0% (5.0%)
TB cases with homeless history	13	1.7% (1.6%)
Male aged 35-59,without job and receiveing public assistance	6	3.8% (10.8%)

Trends	'09	'10	'11	'12	'13
Notified cases	898	892	857	738	772
Rate per 100,000 population	17.3	17.0	16.3	14.1	14.8
Sputum smear +ve. pul.cases	352	334	323	255	279
Rate per 100,000 population	6.8	6.4	6.2	4.9	5.3
Latent Tuberculosis Infection	238	299	452	404	277
Rate per 100,000 population	4.6	5.7	8.6	7.7	5.3



PTB : pumonary TB

‡ Excluding unknown delay(%)	'09	'10	'11	'12	'13
	59.7	53.1	34.6	30.5	35.3

‡ Excluding unknown Tx(%)	'09	'10	'11	'12	'13
	1.4	2.6	1.5	1.5	2.4