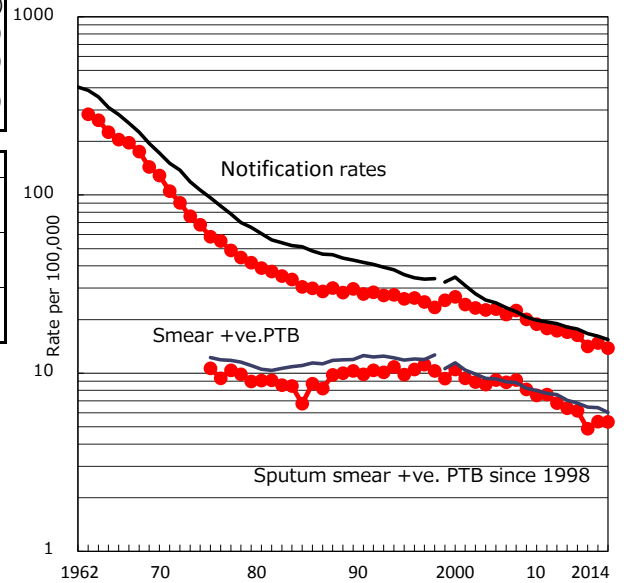


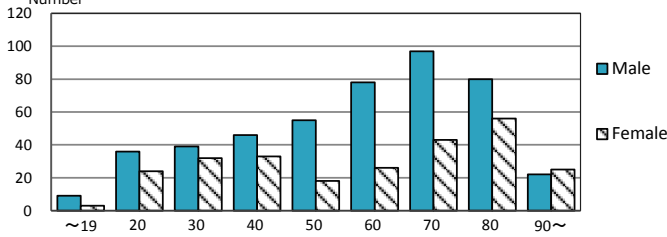
TB statistics in 2014 (Population in Chiba		5,231,539)
Among newly registered : (Japan)		
Foreign borns	50	6.9% (5.6%)
TB cases with homeless history	10	1.4% (1.1%)
Male aged 35-59, without job and receiving public assistance	11	7.9% (8.0%)

Trends	'10	'11	'12	'13	'14
Notified cases	892	857	738	772	722
Rate per 100,000 population	17.0	16.3	14.1	14.8	13.8
Sputum smear +ve. pul.cases	334	323	255	279	279
Rate per 100,000 population	6.4	6.2	4.9	5.3	5.3
Latent Tuberculosis Infection	299	452	404	277	354
Rate per 100,000 population	5.7	8.6	7.7	5.3	6.8

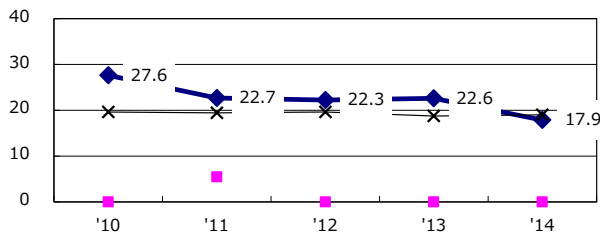
Trends of TB notification rates, all forms and smear +ve.PTB



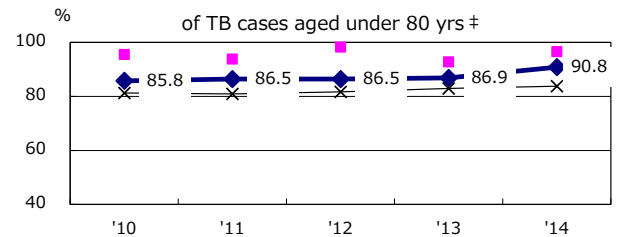
Age-sex composition of notified cases, 2014



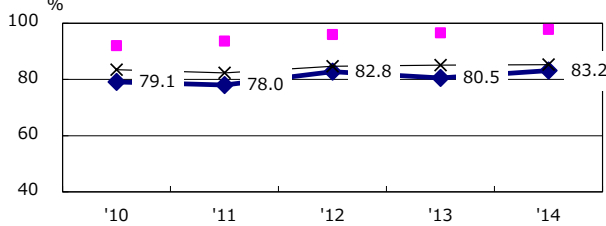
Proportion of cases with total diagnosis delay (> 3 mths) among symptomatic PTB*



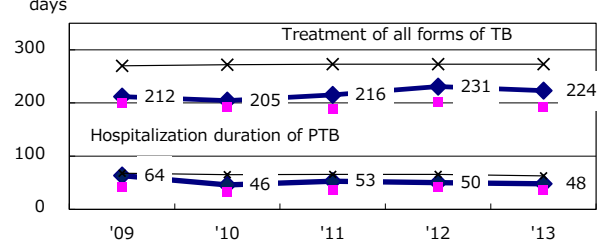
Proportion of TX with HRZ-E/S among all forms



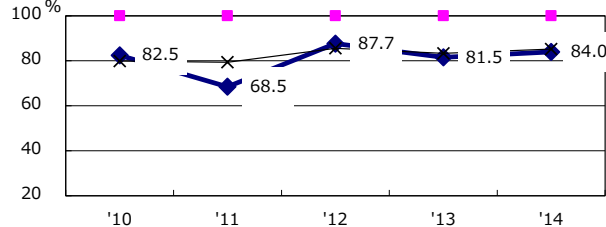
Proportion of Bacteriologically +ve. PTB



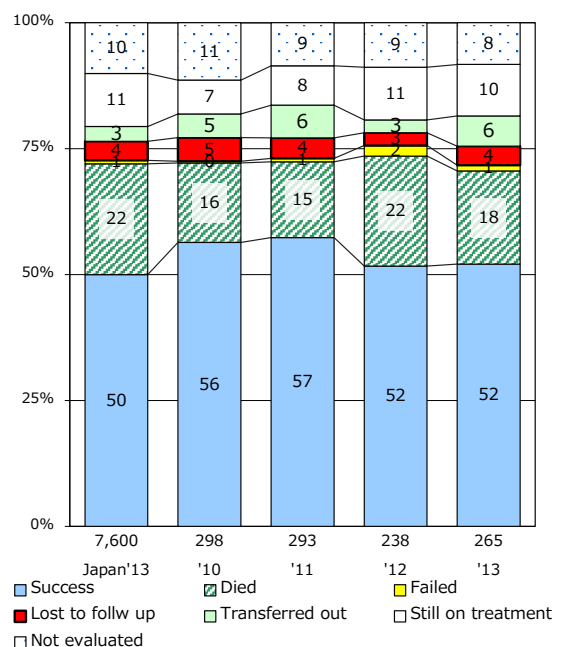
Median duration of treatment of all forms and hospitalization among PTB



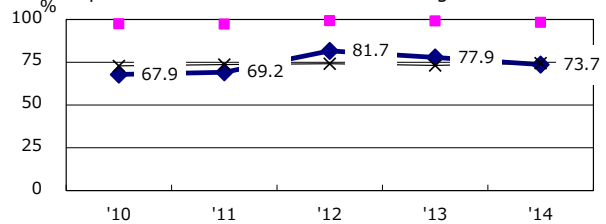
Proportion of culture results obtained among PTB



Treatment outcomes of new sputum smear +ve.TB



Proportion of DST results obtained among culture +ve. PTB



PTB : pumonyary TB

† Excluding unknown delay(%)	'10	'11	'12	'13	'14
	53.1	34.6	30.5	35.3	40.4

‡ Excluding unknown Tx(%)	'10	'11	'12	'13	'14
	2.6	1.5	1.5	2.4	3.0