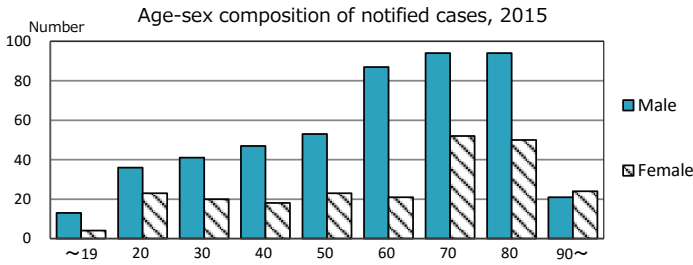
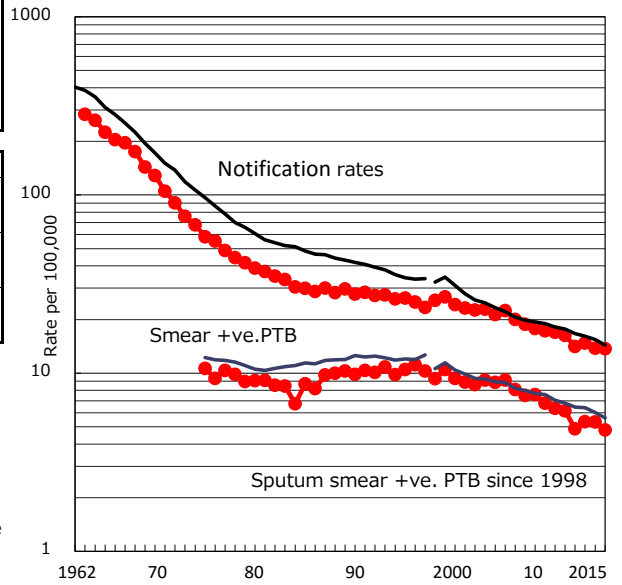


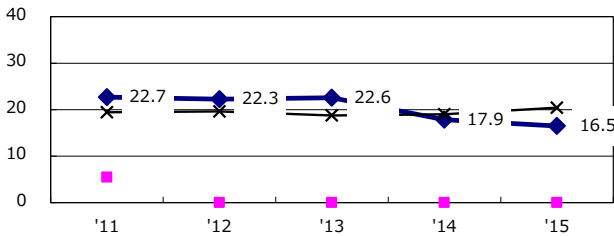
<b>TB statistics in 2015</b> (Population in Chiba: 5,251,388) Among newly notified : (Japan) Foreign borns: 58 8.0% (6.4%) TB cases with homeless history: 12 1.7% (0.9%) Male aged 35-59, without job and receiving public assistance: 13 9.2% (9.0%)
---

Trends	'11	'12	'13	'14	'15
Notified cases	857	738	772	722	721
Rate per 100,000 population	16.3	14.1	14.8	13.8	13.7
Sputum smear +ve. PTB	323	255	279	279	252
Rate per 100,000 population	6.2	4.9	5.3	5.3	4.8
Latent Tuberculosis Infection	452	404	277	354	276
Rate per 100,000 population	8.6	7.7	5.3	6.8	5.3

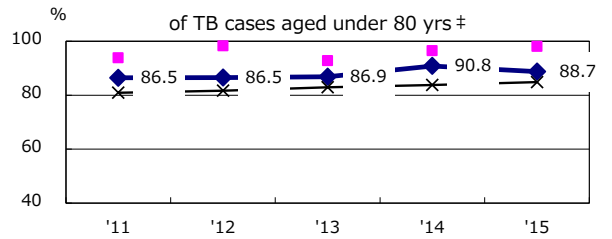
Trends of TB notification rates, all forms and smear +ve. PTB



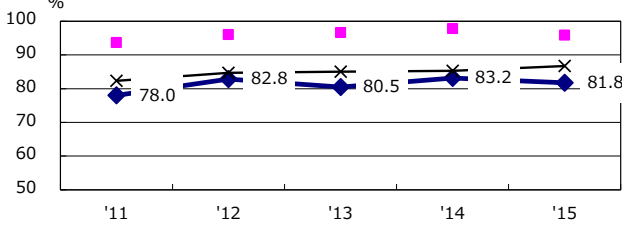
Proportion of cases with total diagnosis delay (> 3 mths) among symptomatic PTB\*



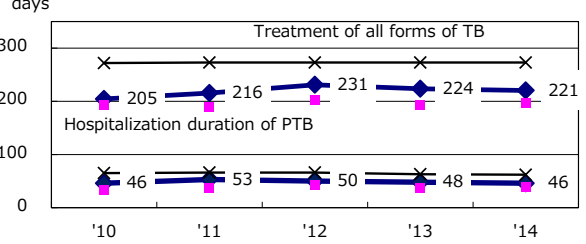
Proportion of TX with HRZ-E/S among all forms of TB cases aged under 80 yrs †



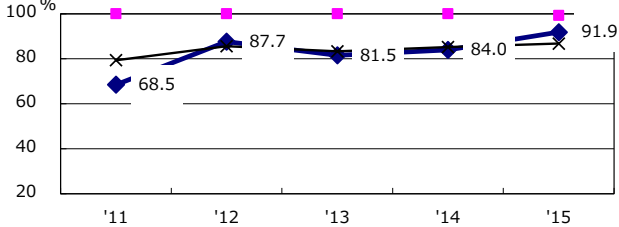
Proportion of Bacteriologically +ve. PTB



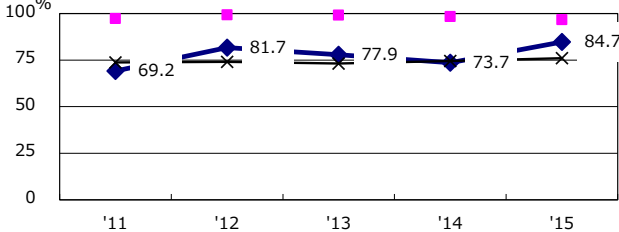
Median duration of treatment of all forms and hospitalization among PTB



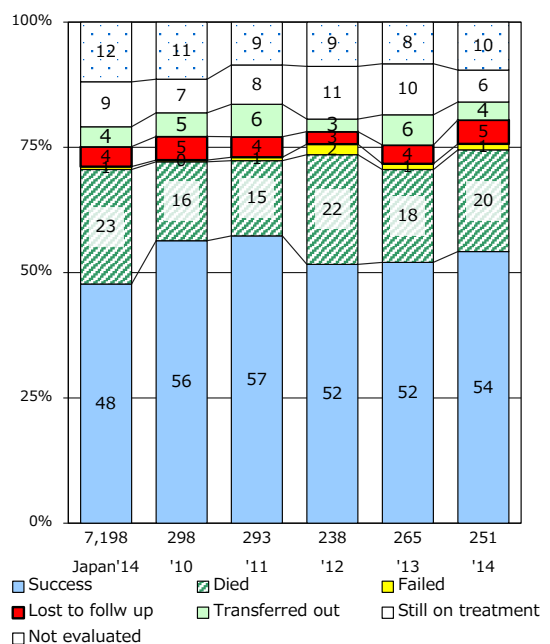
Proportion of culture results obtained among PTB



Proportion of DST results obtained among culture +ve. PTB



Treatment outcomes of new sputum smear +ve. TB



PTB : pulmonary TB

† Excluding unknown delay(%)	'11	'12	'13	'14	'15
	34.6	30.5	35.3	40.4	34.8

‡ Excluding unknown Tx(%)	'11	'12	'13	'14	'15
	1.5	1.5	2.4	3.0	1.7