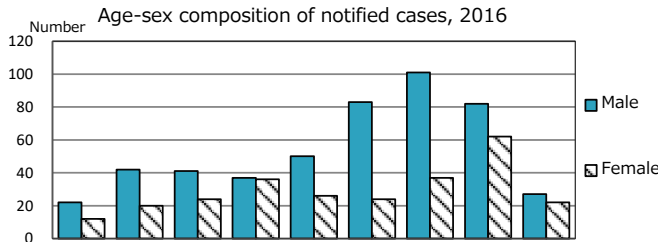
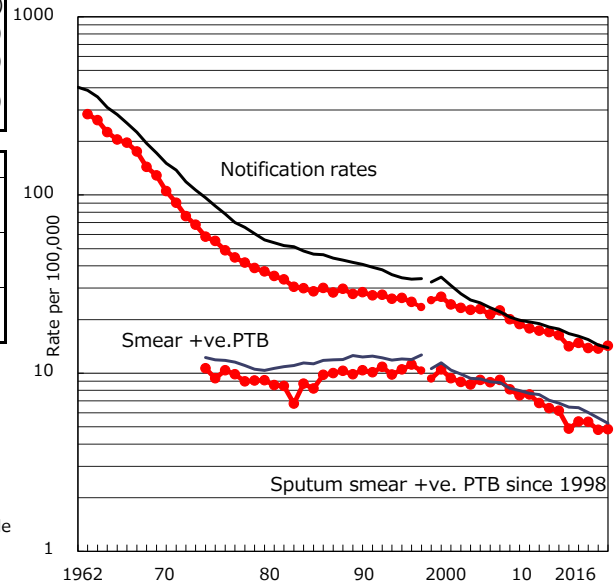


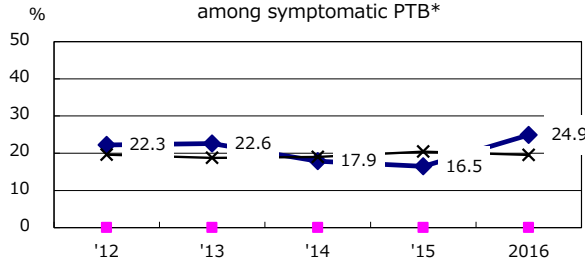
TB statistics in 2016 (Population in Chiba		5,262,176)
Among newly notified : (Japan)		
Foreign borns	68	9.1% (7.6%)
TB cases with homeless history	4	0.5% (1.0%)
Male aged 35-59, without job and receiving public assistance	4	3.1% (7.7%)

Trends	'12	'13	'14	'15	2016
Notified cases	738	772	722	721	748
Rate per 100,000 population	14.1	14.8	13.8	13.7	14.2
Sputum smear +ve. PTB	255	279	279	252	255
Rate per 100,000 population	4.9	5.3	5.3	4.8	4.8
Latent Tuberculosis Infection	404	277	354	276	426
Rate per 100,000 population	7.7	5.3	6.8	5.3	8.1

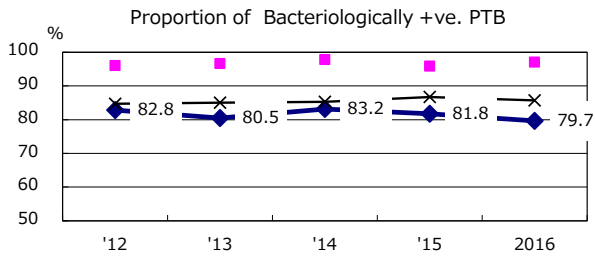
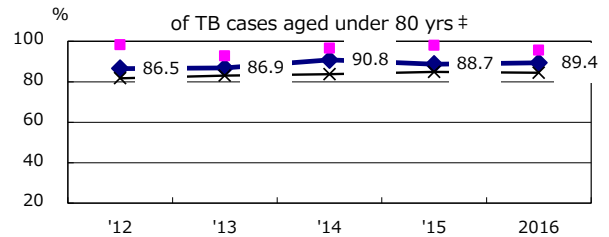
Trends of TB notification rates, all forms and smear +ve.PTB



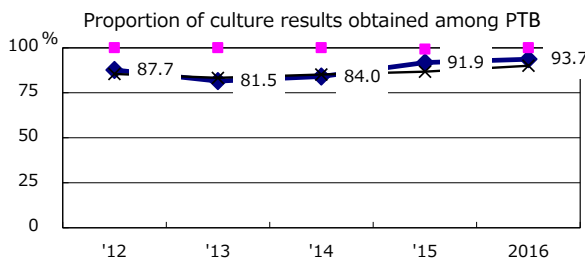
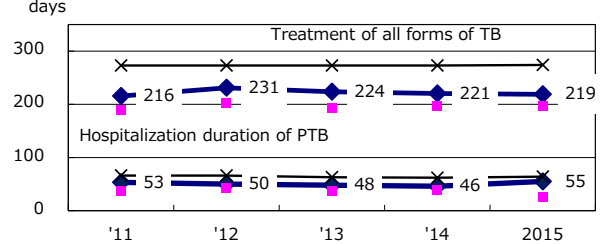
Proportion of cases with total diagnosis delay(> 3 mths) among symptomatic PTB*



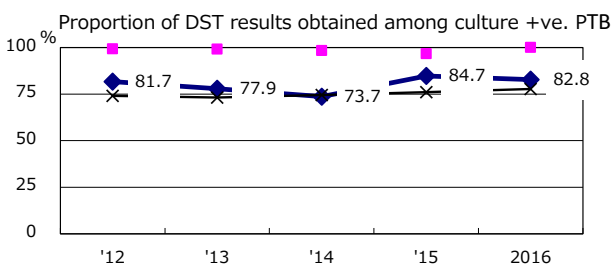
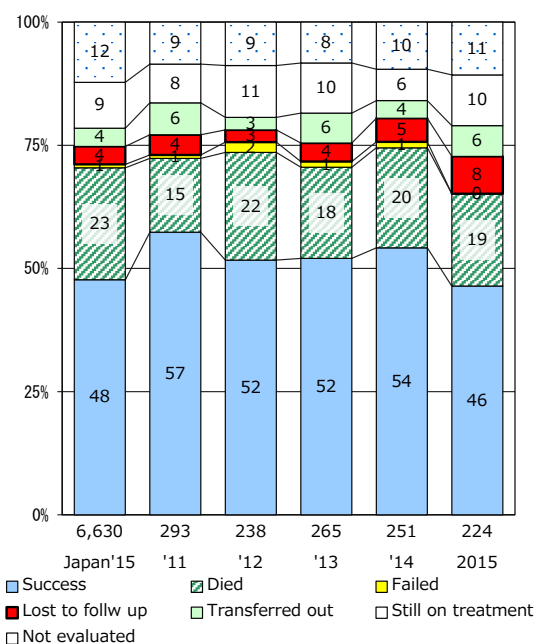
Proportion of TX with HRZ-E/S among all forms of TB cases aged under 80 yrs †



Median duration of treatment of all forms and hospitalization among PTB



Treatment outcomes of new sputum smear +ve.TB



PTB : pulmonary TB

† Excluding unknown delay(%)	'12	'13	'14	'15	2016
	30.5	35.3	40.4	34.8	27.2

‡ Excluding unknown Tx(%)	'12	'13	'14	'15	2016
	1.5	2.4	3.0	1.7	1.6