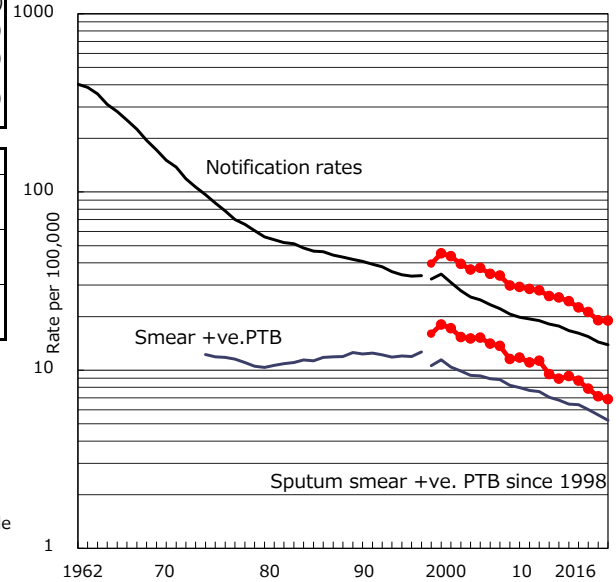


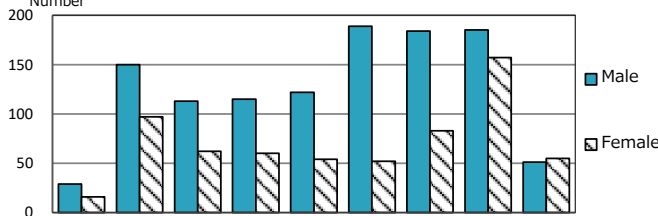
TB statistics in 2016 (Population in Tokyo23ku 9,366,124)	
Among newly notified : (Japan)	
Foreign borns	269 15.2% (7.6%)
TB cases with homeless history	67 3.8% (1.0%)
Male aged 35-59, without job and receiving public assistance	37 10.6% (7.7%)

Trends	'12	'13	'14	'15	2016
Notified cases	2,177	2,034	1,937	1,761	1,774
Rate per 100,000 population	24.3	22.5	21.2	19.1	18.9
Sputum smear +ve. PTB	829	791	719	658	643
Rate per 100,000 population	9.3	8.7	7.9	7.1	6.9
Latent Tuberculosis Infection	868	666	766	674	793
Rate per 100,000 population	9.7	7.4	8.4	7.3	8.5

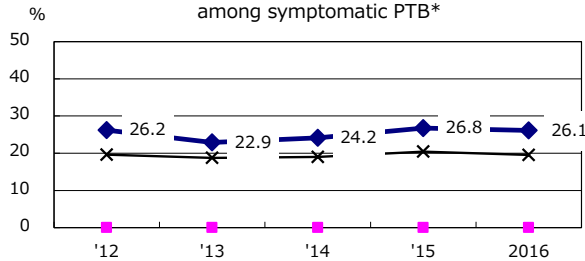
Trends of TB notification rates, all forms and smear +ve.PTB



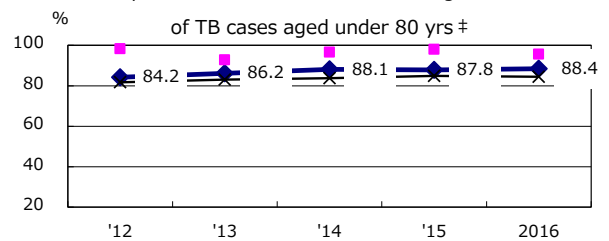
Age-sex composition of notified cases, 2016



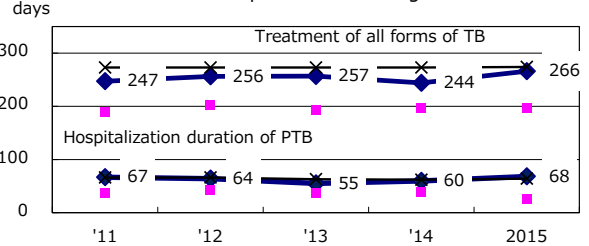
Proportion of cases with total diagnosis delay (> 3 mths) among symptomatic PTB*



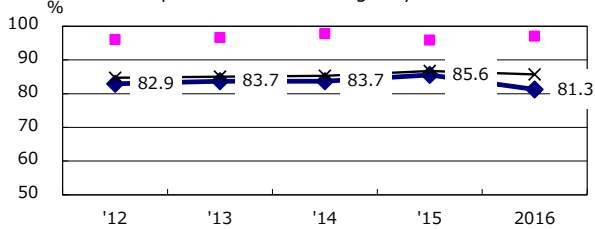
Proportion of TX with HRZ-E/S among all forms of TB cases aged under 80 yrs †



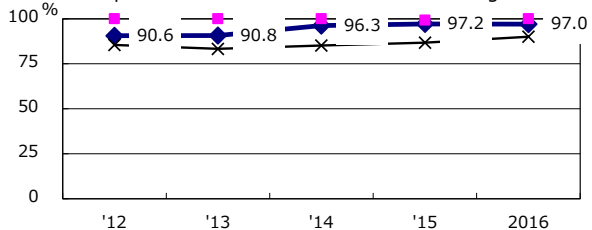
Median duration of treatment of all forms and hospitalization among PTB



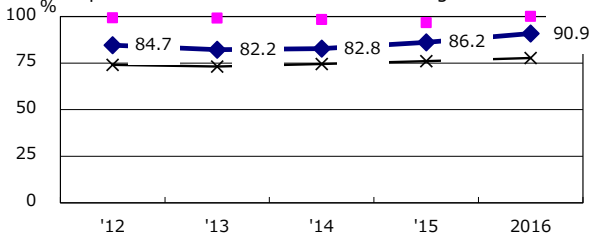
Proportion of Bacteriologically +ve. PTB



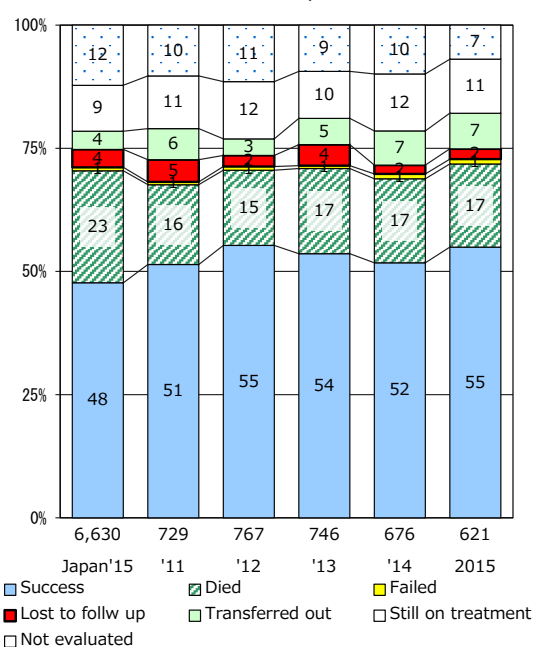
Proportion of culture results obtained among PTB



Proportion of DST results obtained among culture +ve. PTB



Treatment outcomes of new sputum smear +ve.TB



PTB : pulmonary TB

† Excluding unknown delay(%)	'12	'13	'14	'15	2016
	45.1	43.7	51.1	35.4	46.3

‡ Excluding unknown Tx(%)	'12	'13	'14	'15	2016
	3.9	2.8	3.1	3.7	3.0