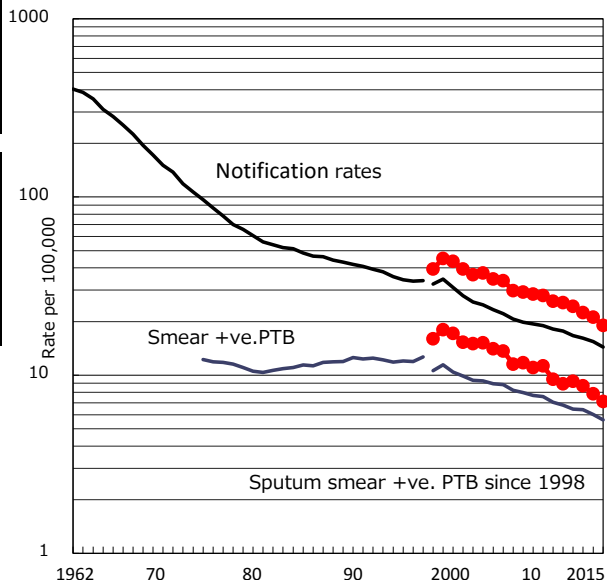


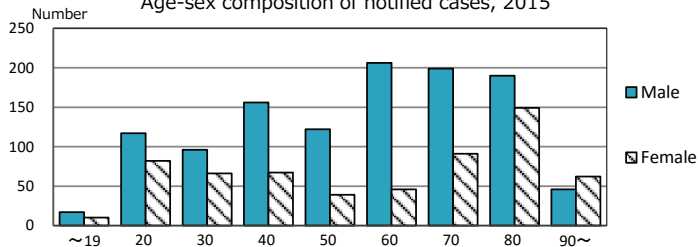
<b>TB statistics in 2015</b> (Population in 23-ku Area of Tokyo 9,241,150 ) Among newly notified : (Japan) Foreign borns 207 11.8% (6.4%) TB cases with homeless history 56 3.2% (0.9%) Male aged 35-59, without job and receiving public assistance 42 11.2% (9.0%)
---

Trends	'11	'12	'13	'14	'15
Notified cases	2,295	2,177	2,034	1,937	1,761
Rate per 100,000 population	25.6	24.3	22.5	21.2	19.1
Sputum smear +ve. PTB	803	829	791	719	658
Rate per 100,000 population	9.0	9.3	8.7	7.9	7.1
Latent Tuberculosis Infection	1,115	868	666	766	674
Rate per 100,000 population	12.4	9.7	7.4	8.4	7.3

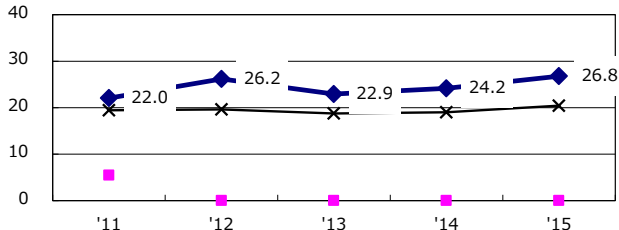
Trends of TB notification rates, all forms and smear +ve.PTB



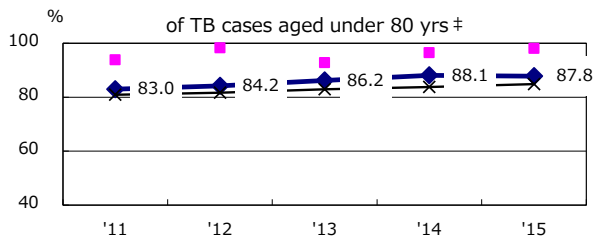
Age-sex composition of notified cases, 2015



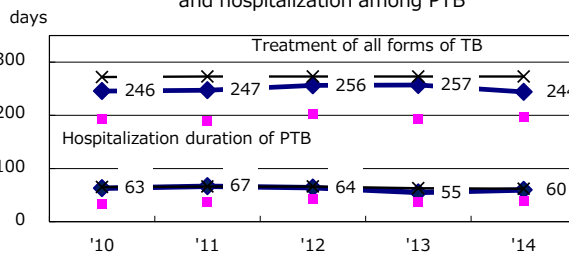
Proportion of cases with total diagnosis delay (> 3 mths) among symptomatic PTB\*



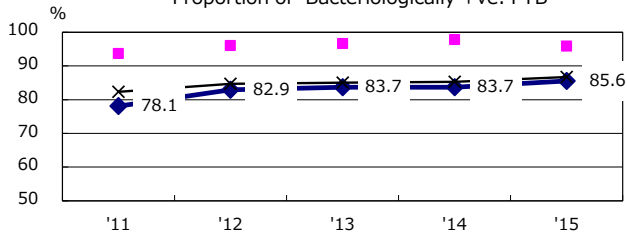
Proportion of TX with HRZ-E/S among all forms of TB cases aged under 80 yrs †



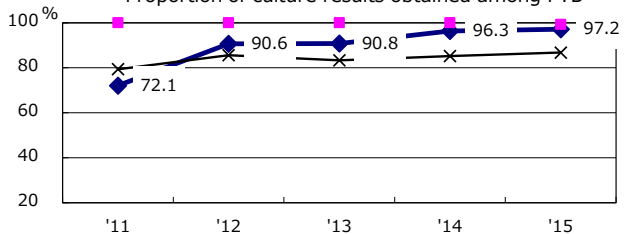
Median duration of treatment of all forms and hospitalization among PTB



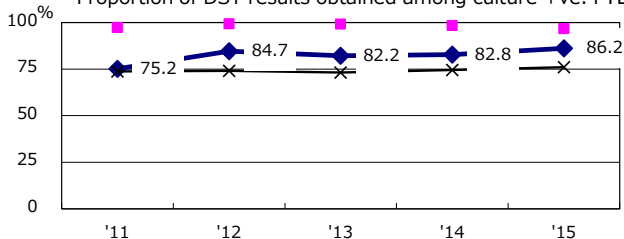
Proportion of Bacteriologically +ve. PTB



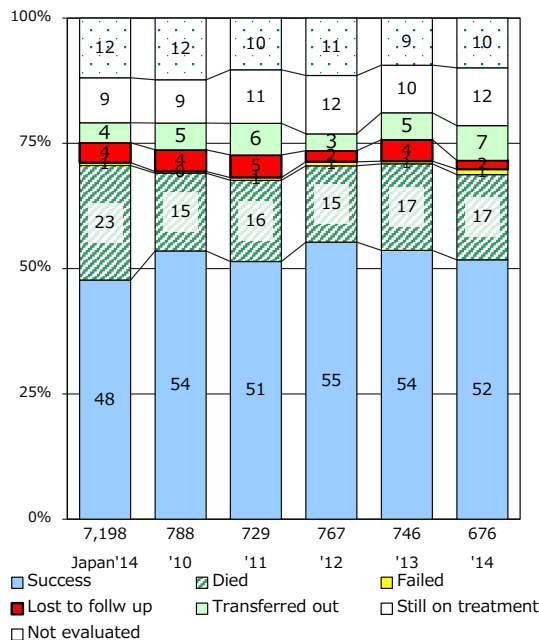
Proportion of culture results obtained among PTB



Proportion of DST results obtained among culture +ve. PTB



Treatment outcomes of new sputum smear +ve.TB



PTB : pulmonary TB

† Excluding unknown delay(%)	'11	'12	'13	'14	'15
	51.8	45.1	43.7	51.1	35.4

‡ Excluding unknown Tx(%)	'11	'12	'13	'14	'15
	4.5	3.9	2.8	3.1	3.7