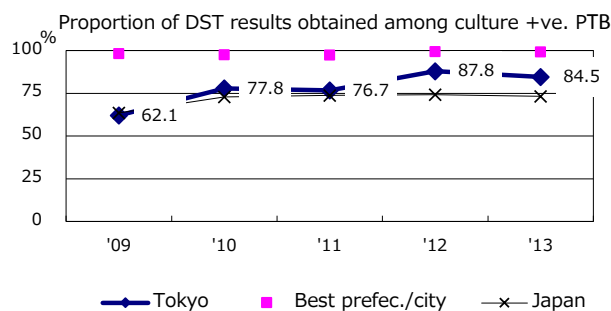
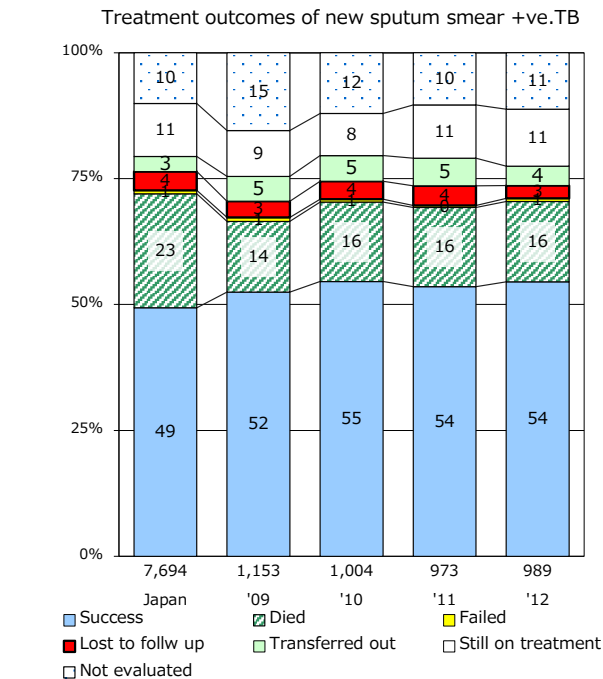
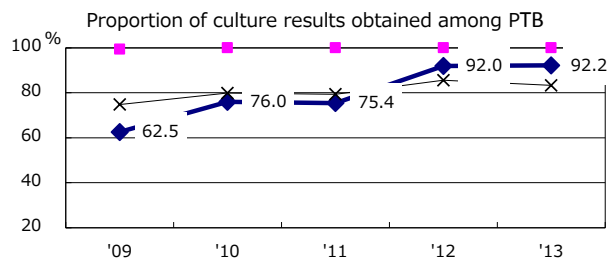
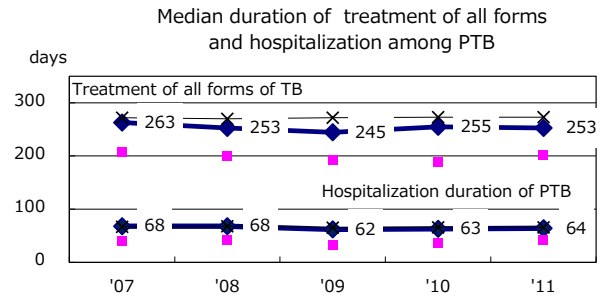
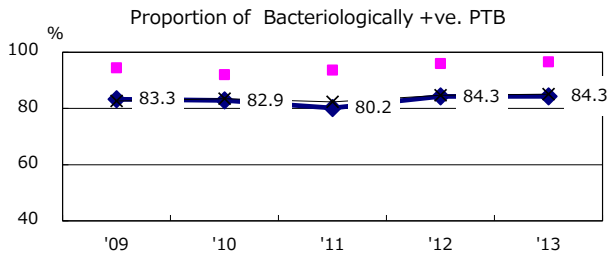
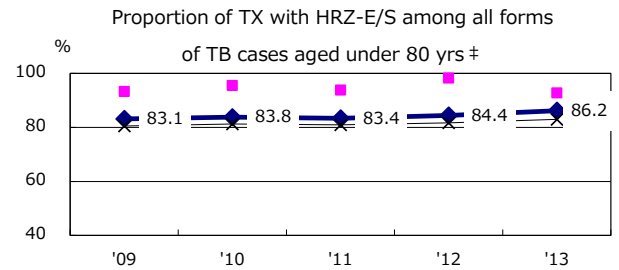
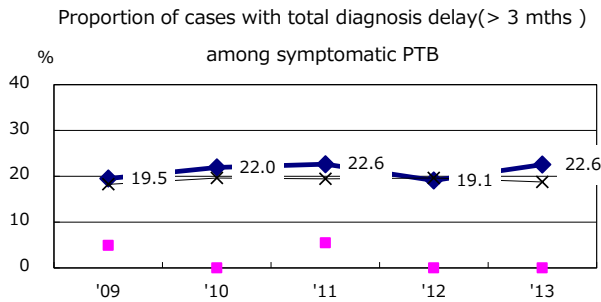
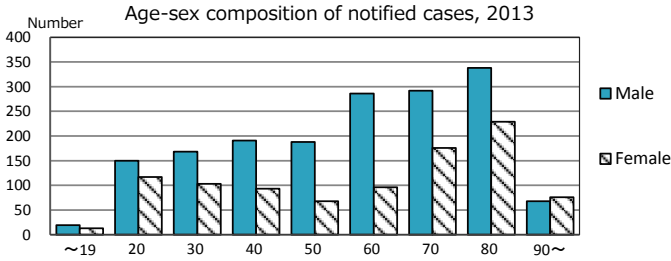
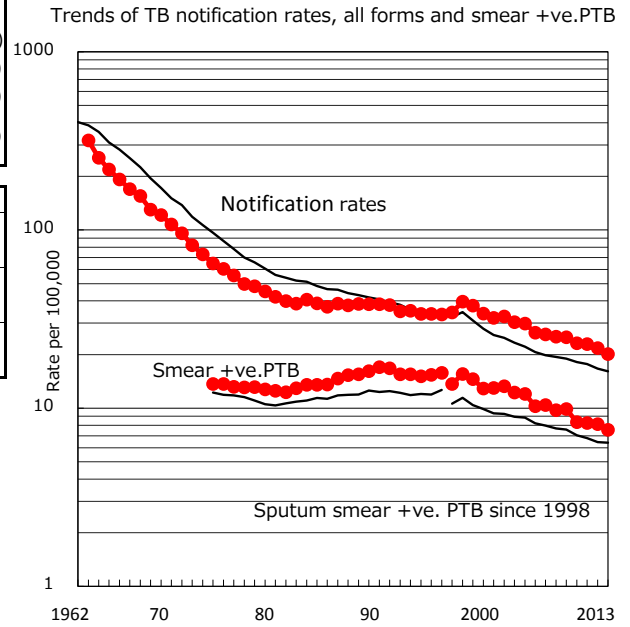


TB statistics in 2013 (Population in Tokyo 13,299,871)	
Among newly registered :	(Japan)
Foreign borns	229 8.6% (5.0%)
TB cases with homeless history	79 3.0% (1.6%)
Male aged 35-59, without job and receiving public assistance	55 10.1% (10.8%)

Trends	'09	'10	'11	'12	'13
Notified cases	3,219	3,045	3,022	2,874	2,671
Rate per 100,000 population	25.0	23.1	22.9	21.7	20.1
Sputum smear +ve. pul.cases	1,270	1,099	1,090	1,076	1,006
Rate per 100,000 population	9.9	8.3	8.3	8.1	7.6
Latent Tuberculosis Infection	701	824	1,522	1,164	987
Rate per 100,000 population	5.4	6.3	11.5	8.8	7.4



PTB : pumonary TB

† Excluding unknown delay(%)	'09	'10	'11	'12	'13
	64.1	43.3	45.2	38.7	38.5

‡ Excluding unknown Tx(%)	'09	'10	'11	'12	'13
	15.9	4.4	4.3	3.6	2.9