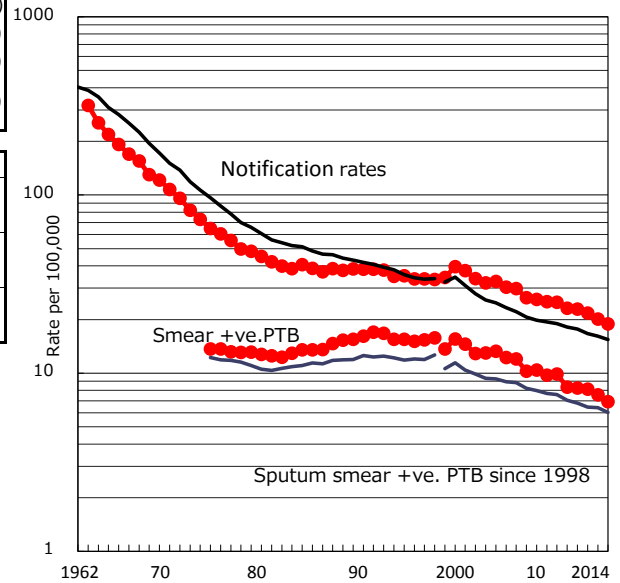


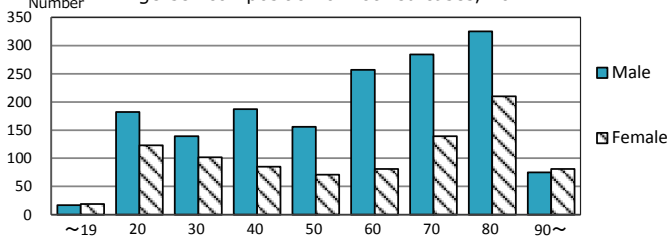
TB statistics in 2014 (Population in Tokyo 13,389,725)	
Among newly registered :	(Japan)
Foreign borns	260 10.3% (5.6%)
TB cases with homeless history	86 3.4% (1.1%)
Male aged 35-59, without job and receiving public assistance	46 9.5% (8.0%)

Trends	'10	'11	'12	'13	'14
Notified cases	3,045	3,022	2,874	2,671	2,533
Rate per 100,000 population	23.1	22.9	21.7	20.1	18.9
Sputum smear +ve. pul.cases	1,099	1,090	1,076	1,006	927
Rate per 100,000 population	8.3	8.3	8.1	7.6	6.9
Latent Tuberculosis Infection	824	1,522	1,164	987	1,060
Rate per 100,000 population	6.3	11.5	8.8	7.4	7.9

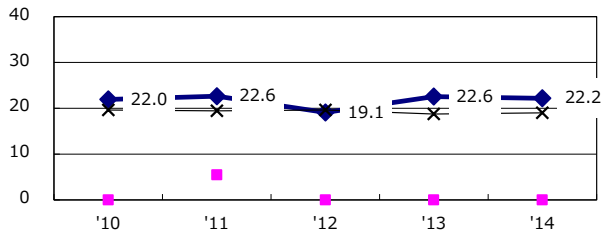
Trends of TB notification rates, all forms and smear +ve.PTB



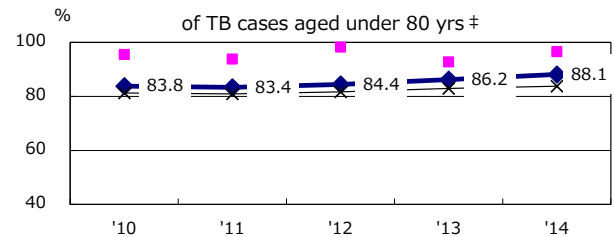
Age-sex composition of notified cases, 2014



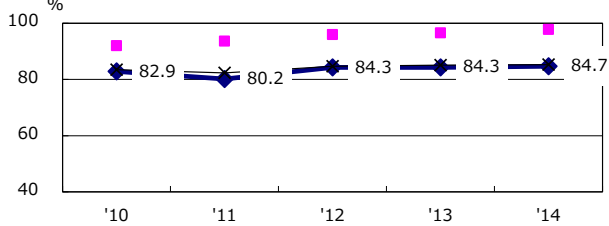
Proportion of cases with total diagnosis delay (> 3 mths) among symptomatic PTB*



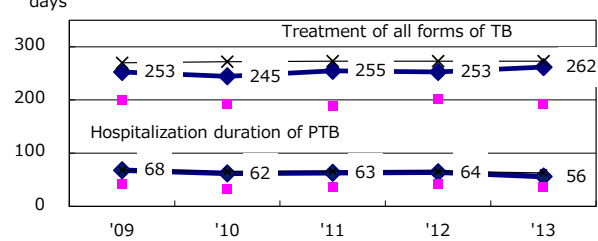
Proportion of TX with HRZ-E/S among all forms of TB cases aged under 80 yrs †



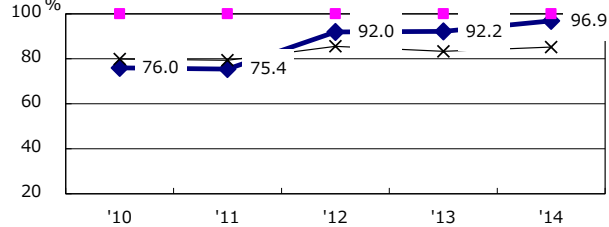
Proportion of Bacteriologically +ve. PTB



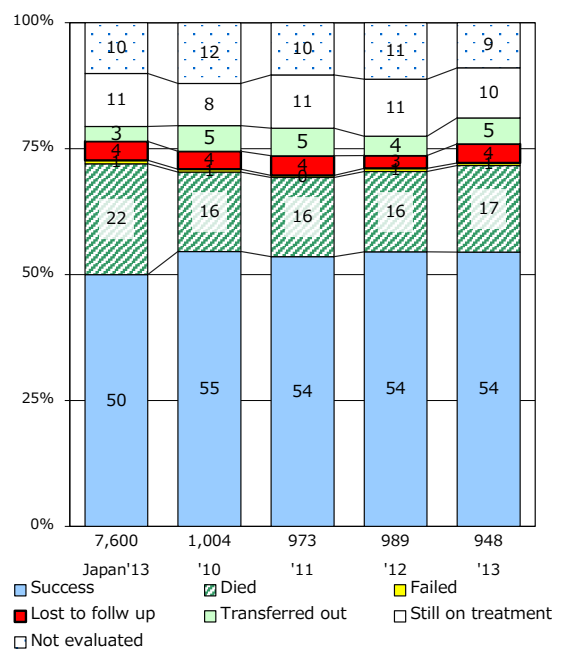
Median duration of treatment of all forms and hospitalization among PTB



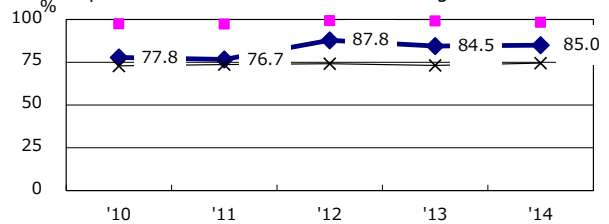
Proportion of culture results obtained among PTB



Treatment outcomes of new sputum smear +ve.TB



Proportion of DST results obtained among culture +ve. PTB



PTB : pumonary TB

† Excluding unknown delay(%)	'10	'11	'12	'13	'14
	43.3	45.2	38.7	38.5	43.4

‡ Excluding unknown Tx(%)	'10	'11	'12	'13	'14
	4.4	4.3	3.6	2.9	3.0