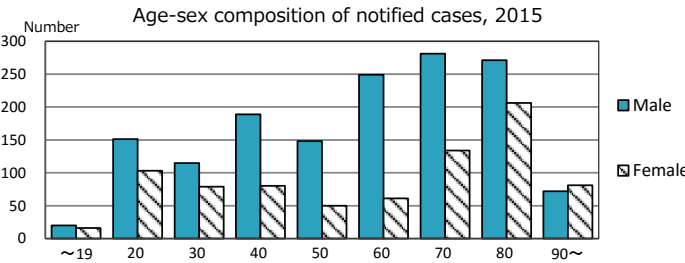
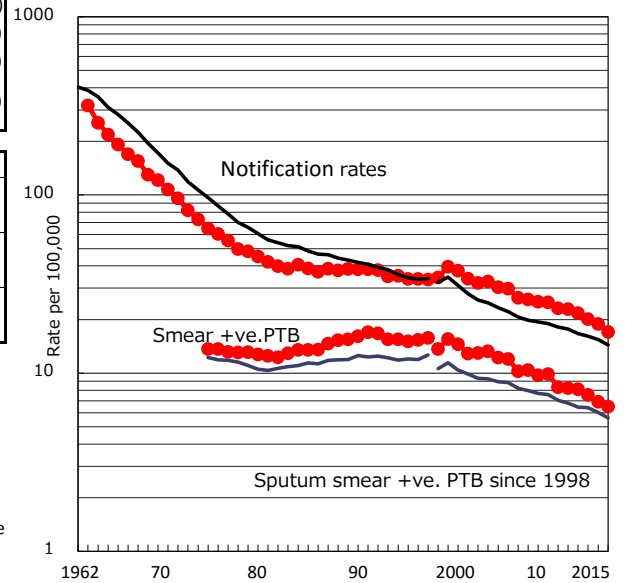


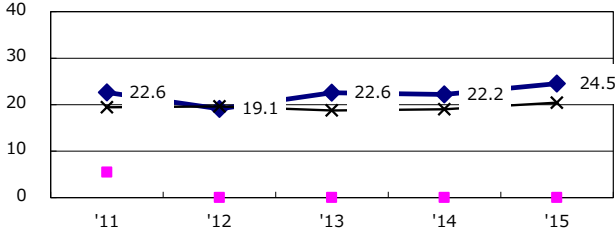
TB statistics in 2015 (Population in Tokyo 13,513,734)	
Among newly notified :	(Japan)
Foreign borns	256 11.1% (6.4%)
TB cases with homeless history	63 2.7% (0.9%)
Male aged 35-59, without job and receiving public assistance	50 11.1% (9.0%)

Trends	'11	'12	'13	'14	'15
Notified cases	3,022	2,874	2,671	2,533	2,306
Rate per 100,000 population	22.9	21.7	20.1	18.9	17.1
Sputum smear +ve. PTB	1,090	1,076	1,006	927	877
Rate per 100,000 population	8.3	8.1	7.6	6.9	6.5
Latent Tuberculosis Infection	1,522	1,164	987	1,060	920
Rate per 100,000 population	11.5	8.8	7.4	7.9	6.8

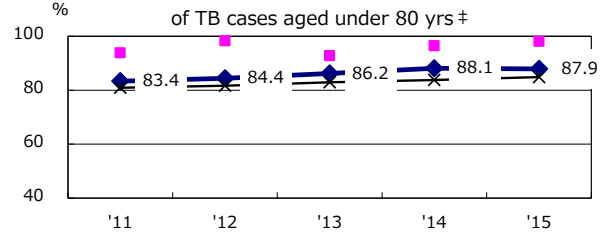
Trends of TB notification rates, all forms and smear +ve. PTB



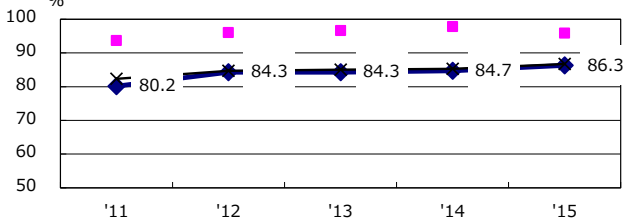
Proportion of cases with total diagnosis delay (> 3 mths) among symptomatic PTB\*



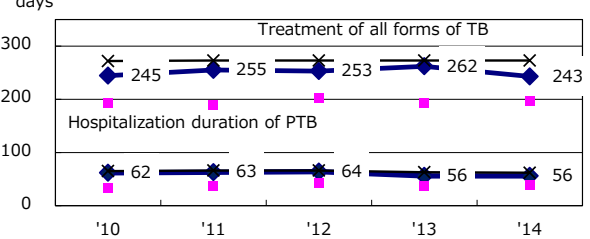
Proportion of TX with HRZ-E/S among all forms of TB cases aged under 80 yrs †



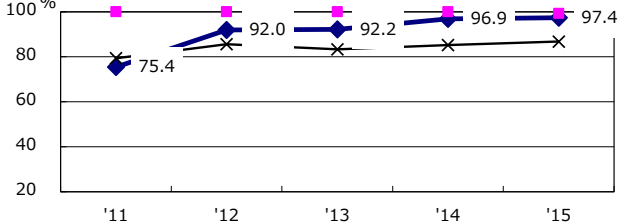
Proportion of Bacteriologically +ve. PTB



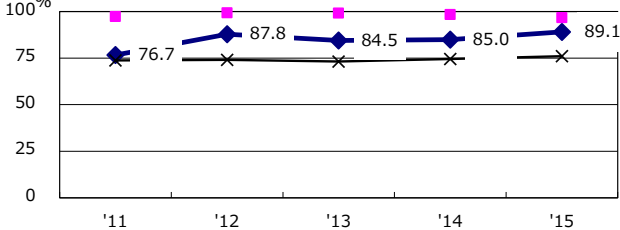
Median duration of treatment of all forms and hospitalization among PTB



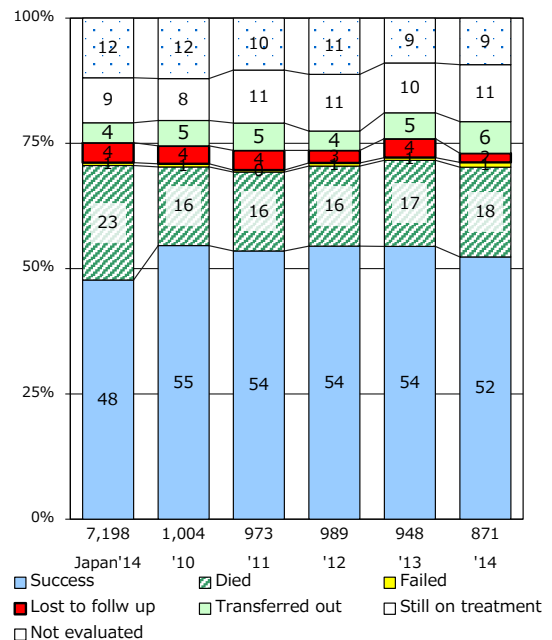
Proportion of culture results obtained among PTB



Proportion of DST results obtained among culture +ve. PTB



Treatment outcomes of new sputum smear +ve. TB



PTB : pulmonary TB

† Excluding unknown delay(%)	'11	'12	'13	'14	'15
	45.2	38.7	38.5	43.4	28.9

‡ Excluding unknown Tx(%)	'11	'12	'13	'14	'15
	4.3	3.6	2.9	3.0	3.0