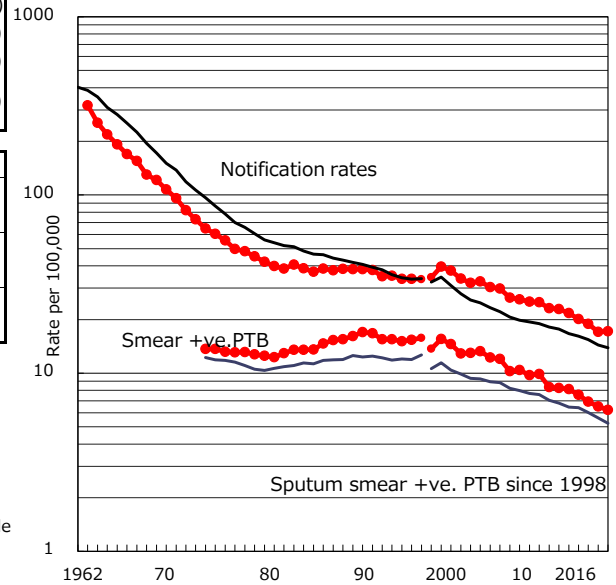


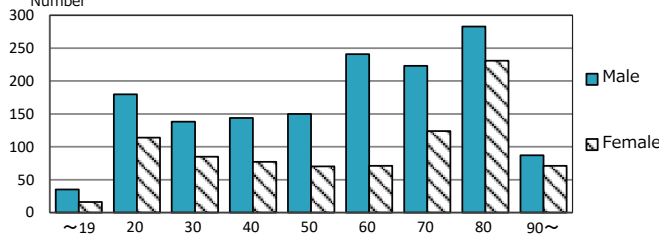
TB statistics in 2016 (Population in Tokyo 13,623,937)	
Among newly notified : (Japan)	
Foreign borns	308 13.2% (7.6%)
TB cases with homeless history	76 3.2% (1.0%)
Male aged 35-59, without job and receiving public assistance	43 10.0% (7.7%)

Trends	'12	'13	'14	'15	2016
Notified cases	2,874	2,671	2,533	2,306	2,340
Rate per 100,000 population	21.7	20.1	18.9	17.1	17.2
Sputum smear +ve. PTB	1,076	1,006	927	877	848
Rate per 100,000 population	8.1	7.6	6.9	6.5	6.2
Latent Tuberculosis Infection	1,164	987	1,060	920	1,020
Rate per 100,000 population	8.8	7.4	7.9	6.8	7.5

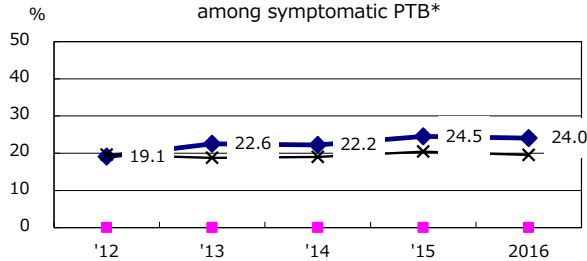
Trends of TB notification rates, all forms and smear +ve.PTB



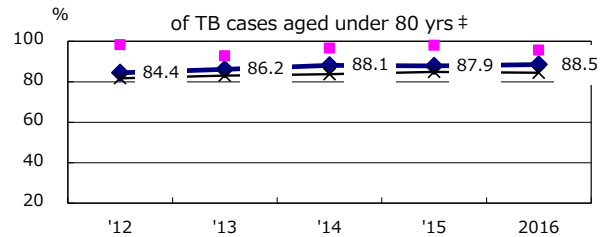
Age-sex composition of notified cases, 2016



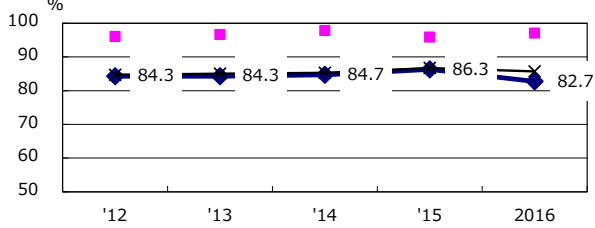
Proportion of cases with total diagnosis delay(> 3 mths) among symptomatic PTB*



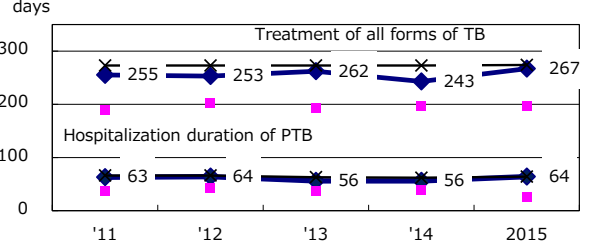
Proportion of TX with HRZ-E/S among all forms



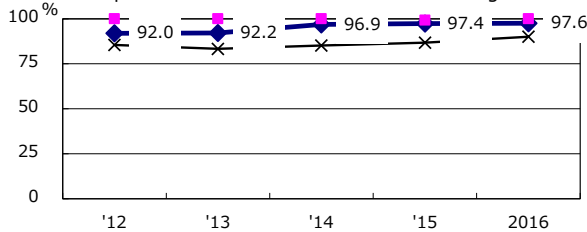
Proportion of Bacteriologically +ve. PTB



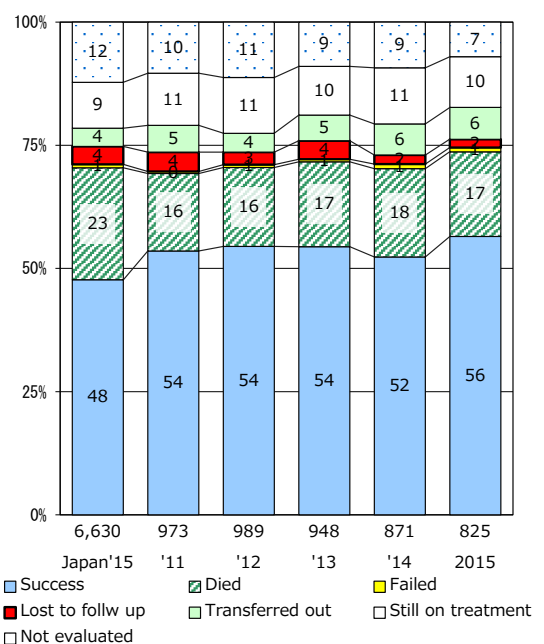
Median duration of treatment of all forms and hospitalization among PTB



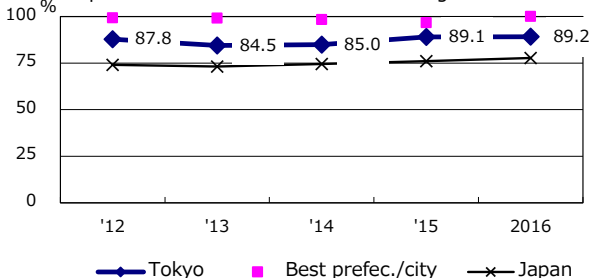
Proportion of culture results obtained among PTB



Treatment outcomes of new sputum smear +ve.TB



Proportion of DST results obtained among culture +ve. PTB



PTB : pulmonary TB

† Excluding unknown delay(%)	'12	'13	'14	'15	2016
	38.7	38.5	43.4	28.9	35.7

‡ Excluding unknown Tx(%)	'12	'13	'14	'15	2016
	3.6	2.9	3.0	3.0	2.6