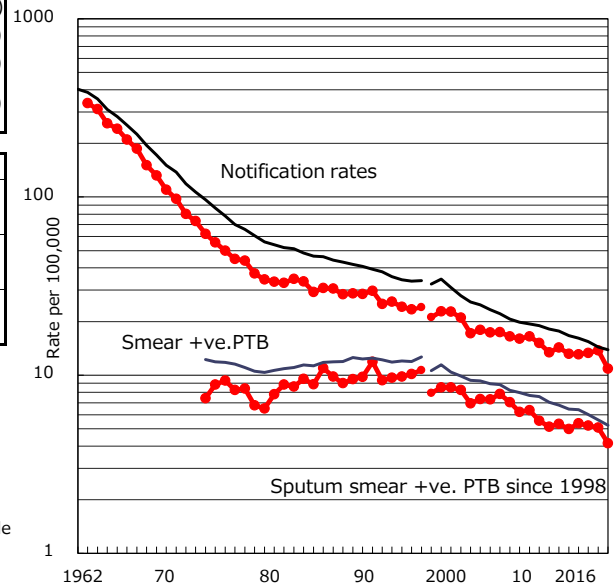


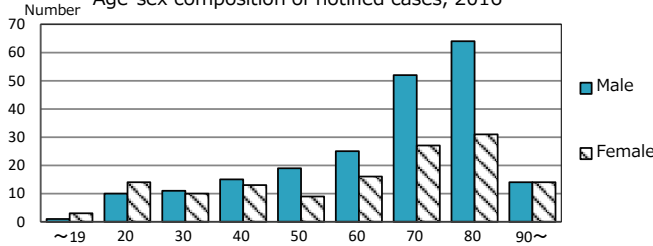
TB statistics in 2016 (Population in Kanagawa 3,202,182)	
Among newly notified : (Japan)	
Foreign borns	28 8.0% (7.6%)
TB cases with homeless history	1 0.3% (1.0%)
Male aged 35-59, without job and receiving public assistance	2 4.4% (7.7%)

Trends	'12	'13	'14	'15	2016
Notified cases	423	420	426	441	348
Rate per 100,000 population	13.2	13.1	13.3	13.8	10.9
Sputum smear +ve. PTB	160	172	167	163	133
Rate per 100,000 population	5.0	5.4	5.2	5.1	4.2
Latent Tuberculosis Infection	232	161	211	228	177
Rate per 100,000 population	7.2	5.0	6.6	7.1	5.5

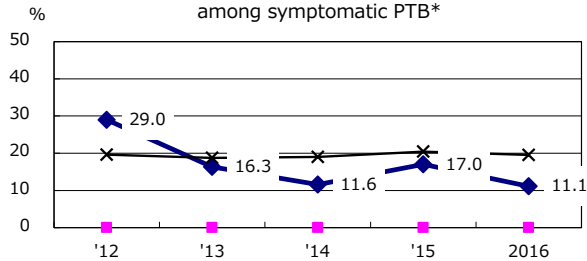
Trends of TB notification rates, all forms and smear +ve.PTB



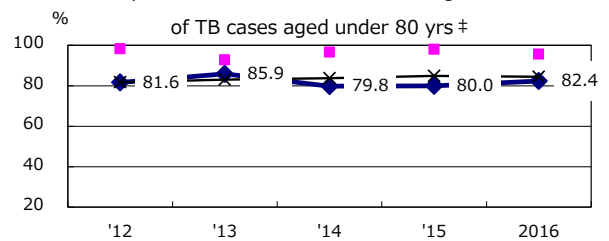
Age-sex composition of notified cases, 2016



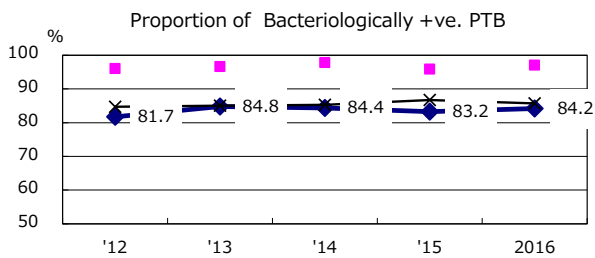
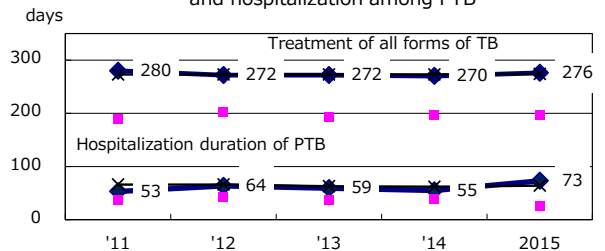
Proportion of cases with total diagnosis delay(> 3 mths) among symptomatic PTB*



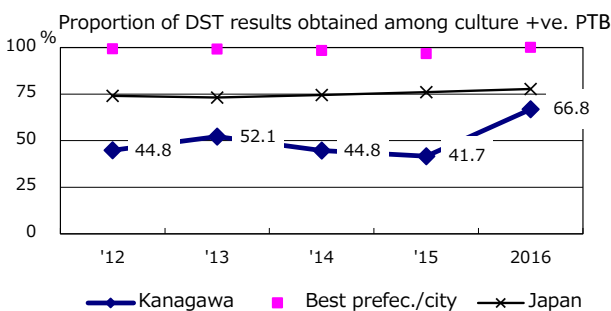
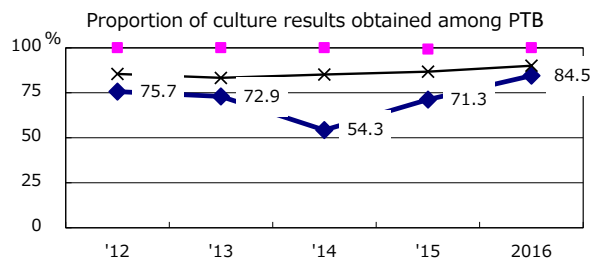
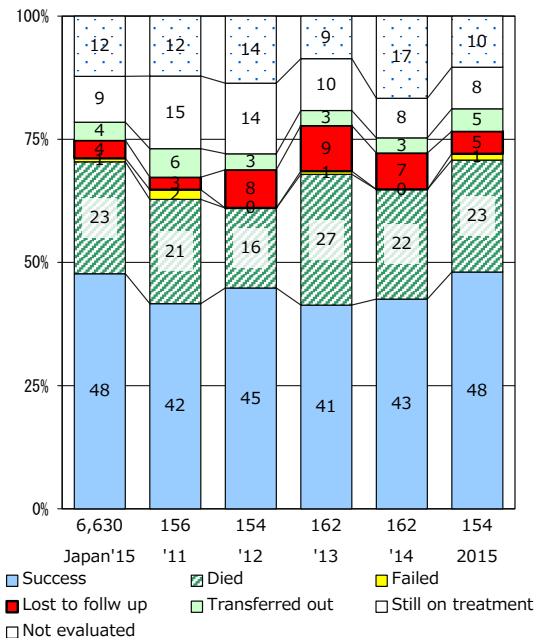
Proportion of TX with HRZ-E/S among all forms of TB cases aged under 80 yrs †



Median duration of treatment of all forms and hospitalization among PTB



Treatment outcomes of new sputum smear +ve.TB



PTB : pulmonary TB

† Excluding unknown delay(%)	'12	'13	'14	'15	2016
	71.7	60.9	60.1	58.4	61.4

‡ Excluding unknown Tx(%)	'12	'13	'14	'15	2016
	0.6	1.8	1.8	3.1	1.8