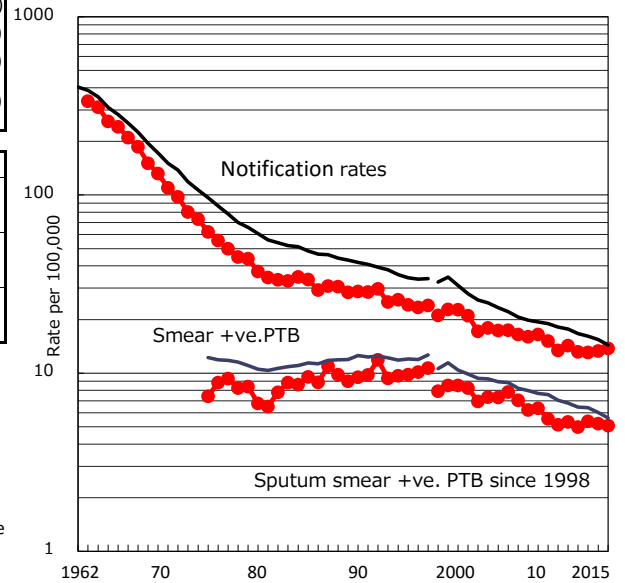


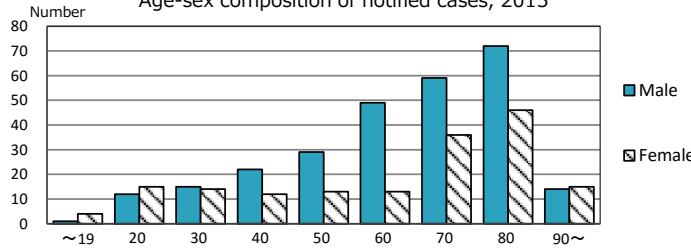
TB statistics in 2015 (Population in Kanagawa 3,205,761)	
Among newly notified : (Japan)	
Foreign borns	21 4.8% (6.4%)
TB cases with homeless history	1 0.2% (0.9%)
Male aged 35-59, without job and receiving public assistance	3 4.5% (9.0%)

Trends	'11	'12	'13	'14	'15
Notified cases	460	423	420	426	441
Rate per 100,000 population	14.3	13.2	13.1	13.3	13.8
Sputum smear +ve. PTB	171	160	172	167	163
Rate per 100,000 population	5.3	5.0	5.4	5.2	5.1
Latent Tuberculosis Infection	207	232	161	211	228
Rate per 100,000 population	6.4	7.2	5.0	6.6	7.1

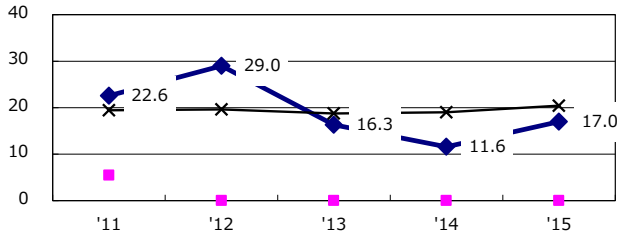
Trends of TB notification rates, all forms and smear +ve. PTB



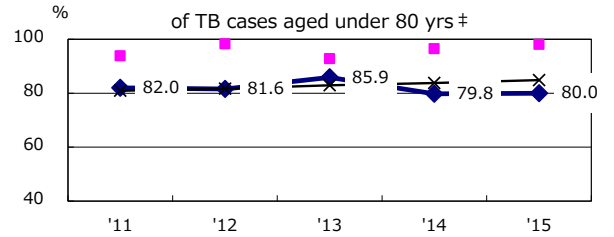
Age-sex composition of notified cases, 2015



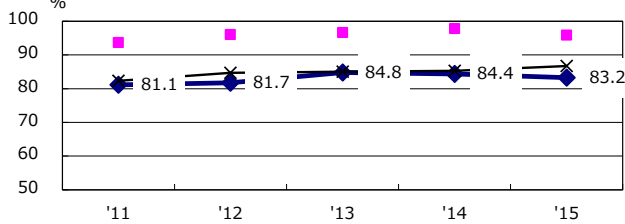
Proportion of cases with total diagnosis delay (> 3 mths) among symptomatic PTB*



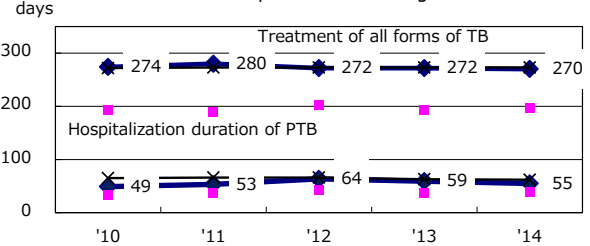
Proportion of TX with HRZ-E/S among all forms of TB cases aged under 80 yrs †



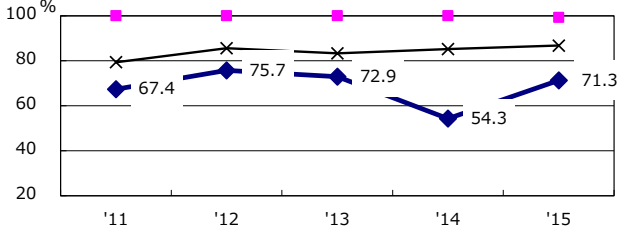
Proportion of Bacteriologically +ve. PTB



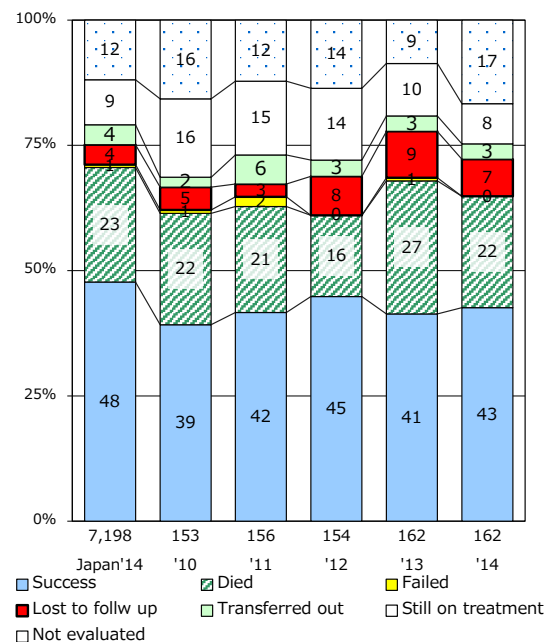
Median duration of treatment of all forms and hospitalization among PTB



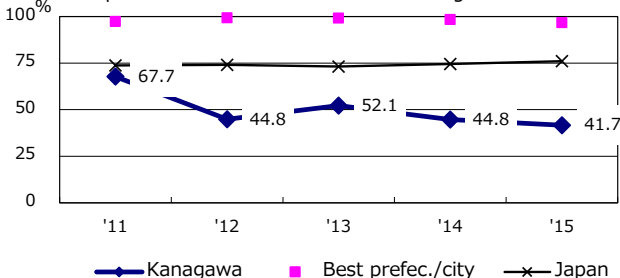
Proportion of culture results obtained among PTB



Treatment outcomes of new sputum smear +ve. TB



Proportion of DST results obtained among culture +ve. PTB



PTB : pulmonary TB

† Excluding unknown delay(%)	'11	'12	'13	'14	'15
	64.4	71.7	60.9	60.1	58.4

‡ Excluding unknown Tx(%)	'11	'12	'13	'14	'15
	2.6	0.6	1.8	1.8	3.1