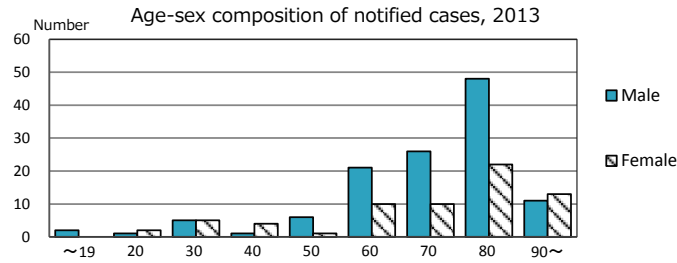
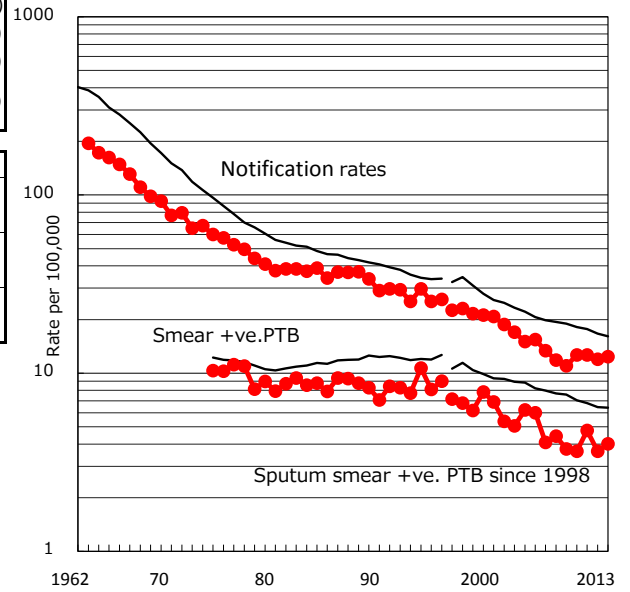


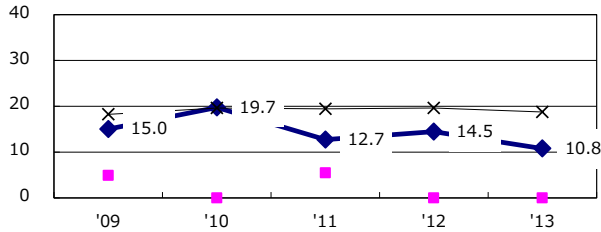
TB statistics in 2013 ( Population in Niigata 1,520,313 )	
Among newly registered : (Japan)	
Foreign borns	5 2.7% (5.0%)
TB cases with homeless history	0 0.0% (1.6%)
Male aged 35-59, without job and receiving public assistance	0 0.0% (10.8%)

Trends	'09	'10	'11	'12	'13
Notified cases	173	198	196	184	188
Rate per 100,000 population	11.0	12.7	12.6	12.0	12.4
Sputum smear +ve. pul.cases	59	57	74	56	61
Rate per 100,000 population	3.7	3.6	4.8	3.6	4.0
Latent Tuberculosis Infection	11	42	57	58	71
Rate per 100,000 population	0.7	2.7	3.7	3.8	4.7

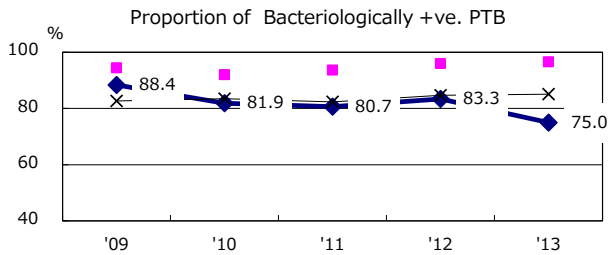
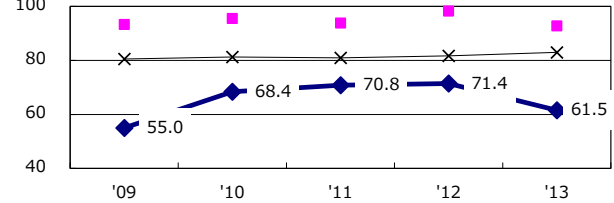
Trends of TB notification rates, all forms and smear +ve.PTB



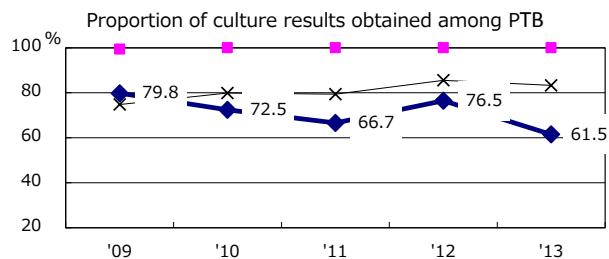
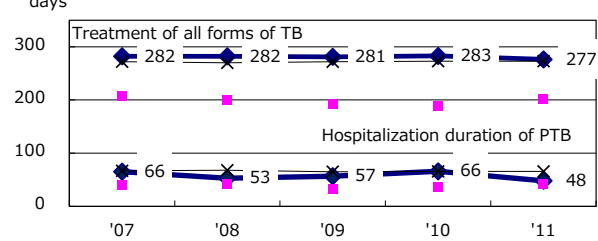
Proportion of cases with total diagnosis delay(> 3 mths) among symptomatic PTB



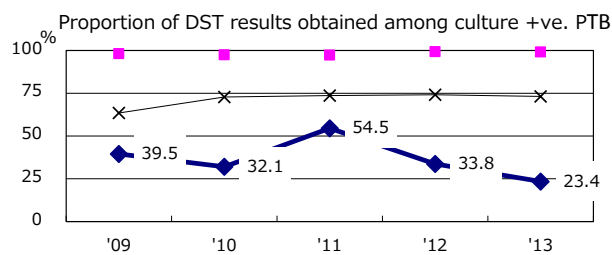
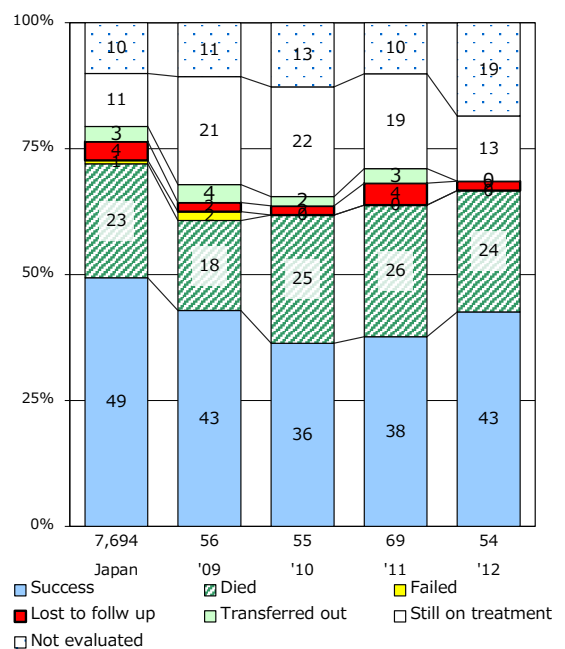
Proportion of TX with HRZ-E/S among all forms of TB cases aged under 80 yrs †



Median duration of treatment of all forms and hospitalization among PTB



Treatment outcomes of new sputum smear +ve.TB



PTB : pumonyary TB

† Excluding unknown delay(%)	'09	'10	'11	'12	'13
	20.8	30.9	45.7	37.3	43.5

‡ Excluding unknown Tx(%)	'09	'10	'11	'12	'13
	2.0	4.2	3.0	1.1	3.2