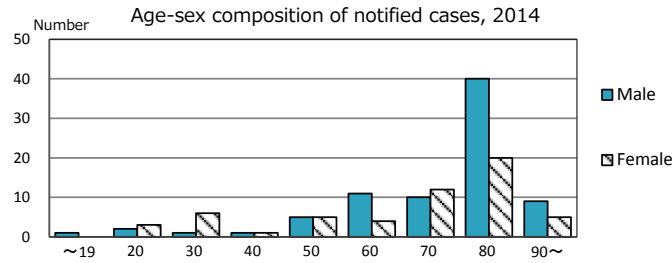
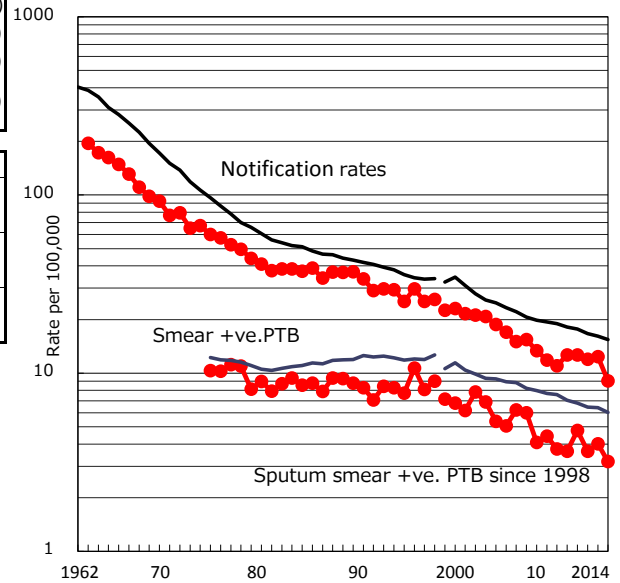


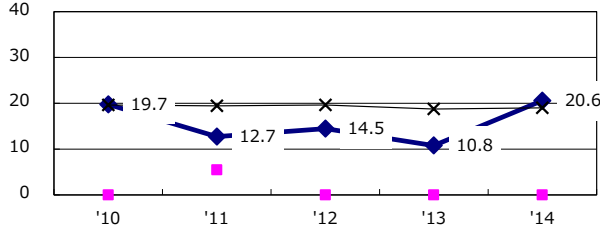
TB statistics in 2014 ( Population in Niigata 1,504,830 )	
Among newly registered :	(Japan)
Foreign borns	10 7.4% (5.6%)
TB cases with homeless history	1 0.7% (1.1%)
Male aged 35-59, without job and receiving public assistance	0 0.0% (8.0%)

Trends	'10	'11	'12	'13	'14
Notified cases	198	196	184	188	136
Rate per 100,000 population	12.7	12.6	12.0	12.4	9.0
Sputum smear +ve. pul.cases	57	74	56	61	48
Rate per 100,000 population	3.6	4.8	3.6	4.0	3.2
Latent Tuberculosis Infection	42	57	58	71	56
Rate per 100,000 population	2.7	3.7	3.8	4.7	3.7

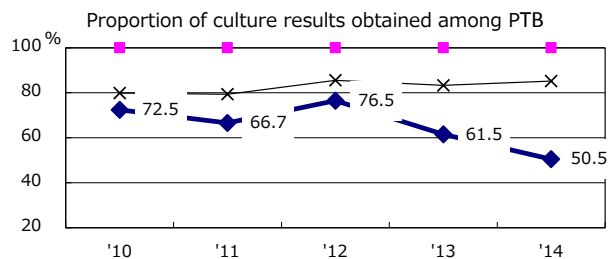
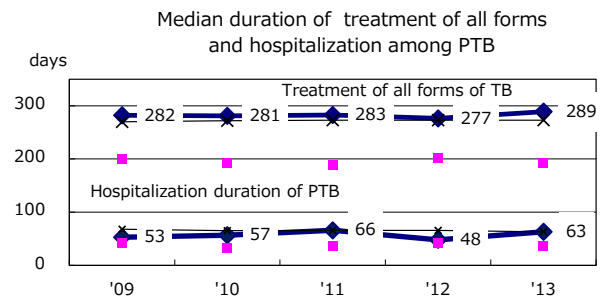
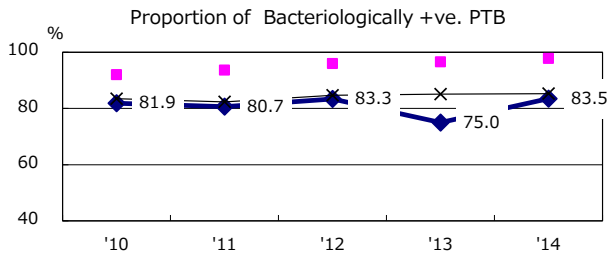
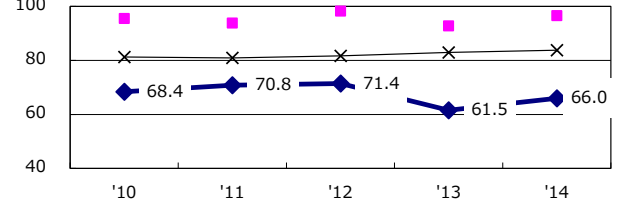
Trends of TB notification rates, all forms and smear +ve.PTB



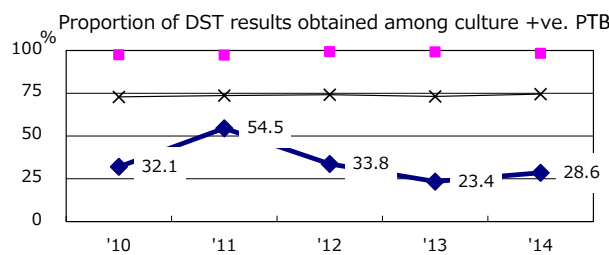
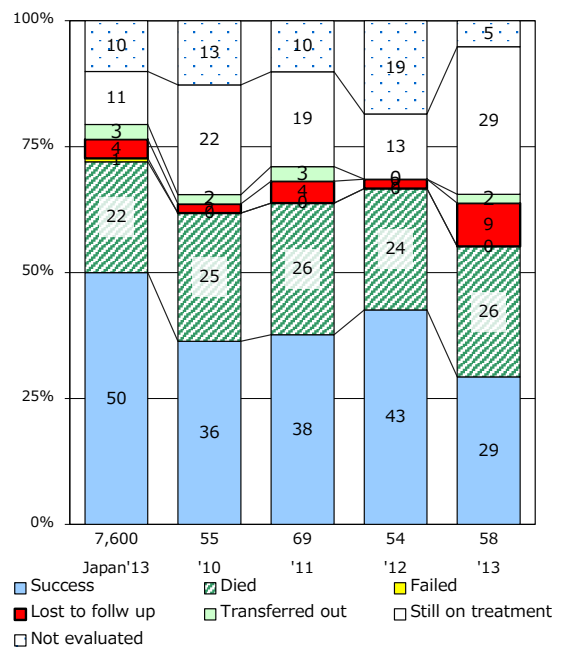
Proportion of cases with total diagnosis delay(> 3 mths) among symptomatic PTB\*



Proportion of TX with HRZ-E/S among all forms of TB cases aged under 80 yrs †



Treatment outcomes of new sputum smear +ve.TB



PTB : pumonary TB

† Excluding unknown delay(%)	'10	'11	'12	'13	'14
	30.9	45.7	37.3	43.5	55.8

‡ Excluding unknown Tx(%)	'10	'11	'12	'13	'14
	4.2	3.0	1.1	3.2	24.2