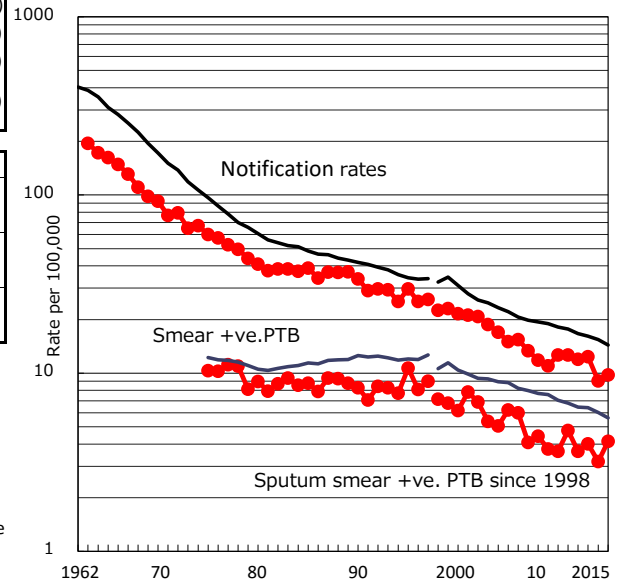


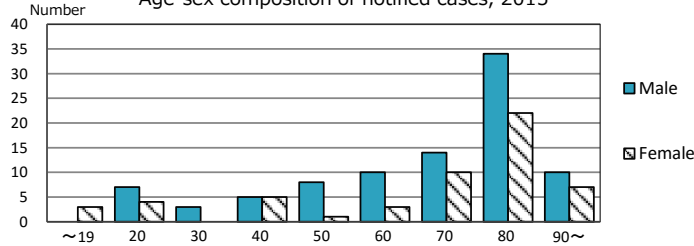
TB statistics in 2015		(Population in Niigata	1,494,584)
Among newly notified :		(Japan)	
Foreign borns	11	7.5%	(6.4%)
TB cases with homeless history	0	0.0%	(0.9%)
Male aged 35-59, without job and receiving public assistance	1	6.3%	(9.0%)

Trends	'11	'12	'13	'14	'15
Notified cases	196	184	188	136	146
Rate per 100,000 population	12.6	12.0	12.4	9.0	9.8
Sputum smear +ve. PTB	74	56	61	48	62
Rate per 100,000 population	4.8	3.6	4.0	3.2	4.1
Latent Tuberculosis Infection	57	58	71	56	70
Rate per 100,000 population	3.7	3.8	4.7	3.7	4.7

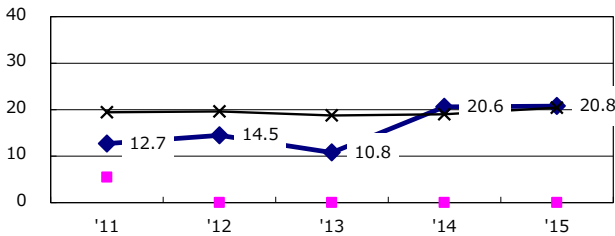
Trends of TB notification rates, all forms and smear +ve. PTB



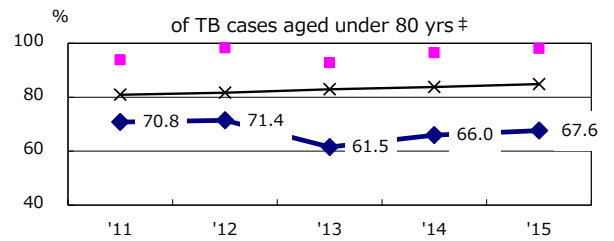
Age-sex composition of notified cases, 2015



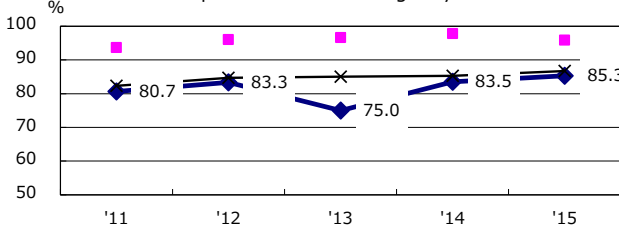
Proportion of cases with total diagnosis delay (> 3 mths) among symptomatic PTB*



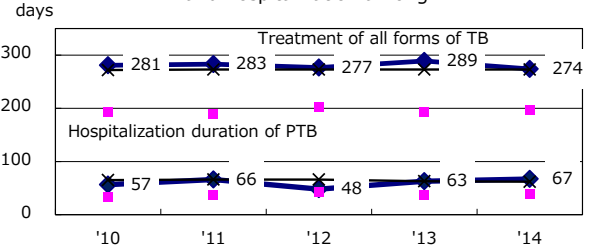
Proportion of TX with HRZ-E/S among all forms of TB cases aged under 80 yrs †



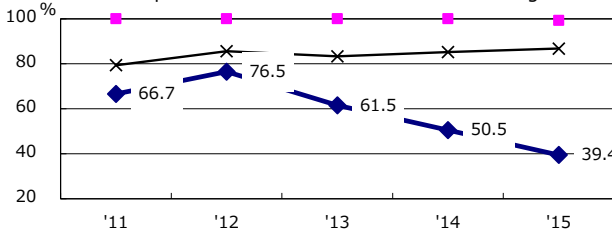
Proportion of Bacteriologically +ve. PTB



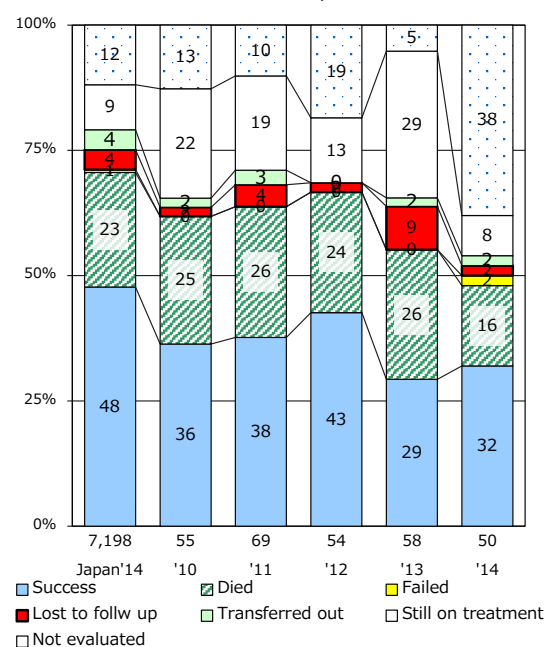
Median duration of treatment of all forms and hospitalization among PTB



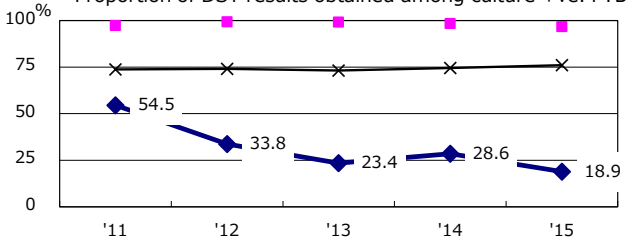
Proportion of culture results obtained among PTB



Treatment outcomes of new sputum smear +ve. TB



Proportion of DST results obtained among culture +ve. PTB



PTB : pulmonary TB

† Excluding unknown delay(%)	'11	'12	'13	'14	'15
	45.7	37.3	43.5	55.8	34.6

‡ Excluding unknown Tx(%)	'11	'12	'13	'14	'15
	3.0	1.1	3.2	24.2	2.7