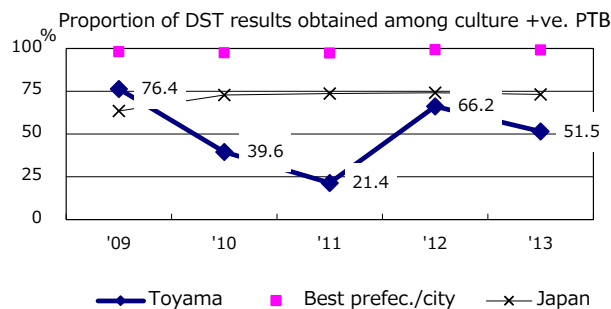
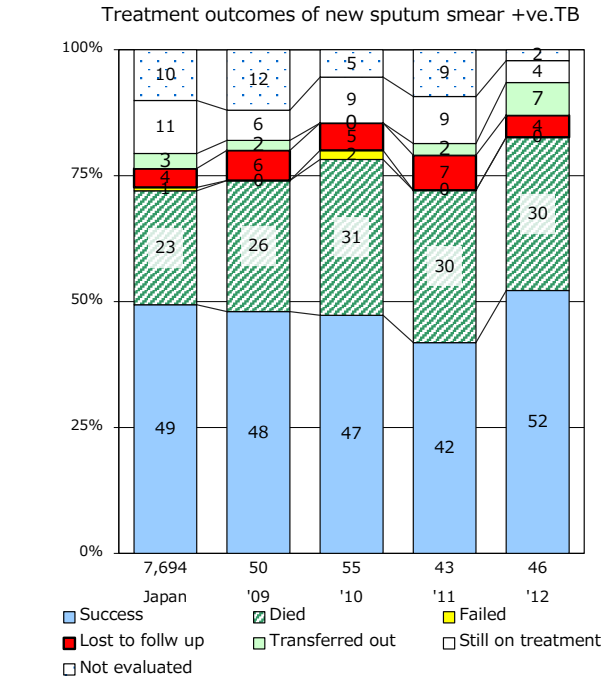
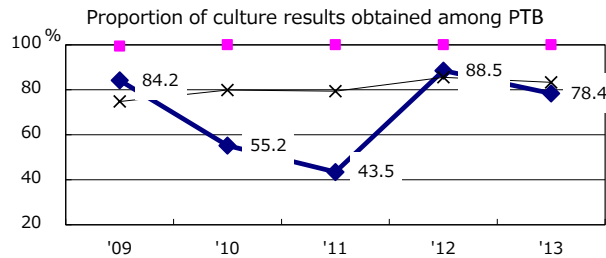
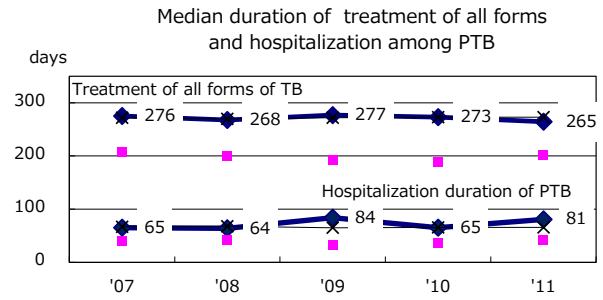
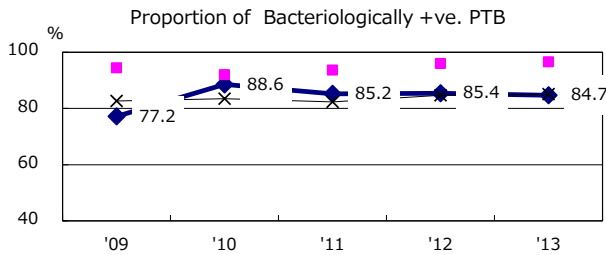
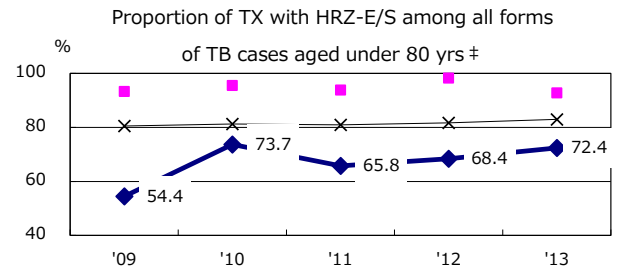
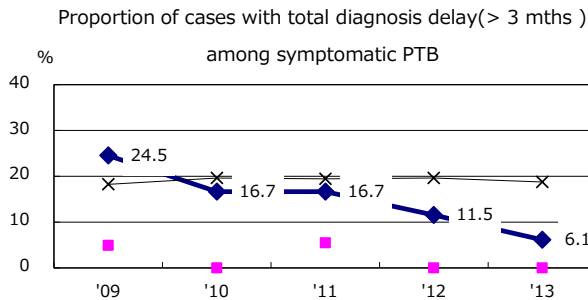
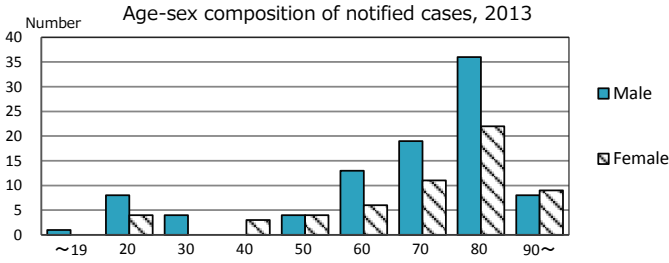
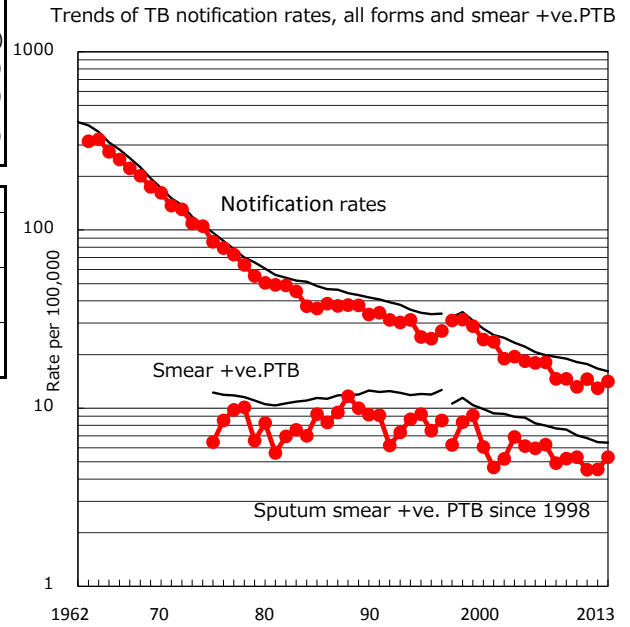


TB statistics in 2013 (Population in Toyama 1,076,010)	
Among newly registered :	(Japan)
Foreign borns	4 2.6% (5.0%)
TB cases with homeless history	1 0.7% (1.6%)
Male aged 35-59,without job and receiveing public assistance	0 0.0% (10.8%)

Trends	'09	'10	'11	'12	'13
Notified cases	160	144	158	140	152
Rate per 100,000 population	14.6	13.2	14.5	12.9	14.1
Sputum smear +ve. pul.cases	57	58	49	49	57
Rate per 100,000 population	5.2	5.3	4.5	4.5	5.3
Latent Tuberculosis Infection	21	33	81	66	57
Rate per 100,000 population	1.9	3.0	7.4	6.1	5.3



PTB : pumonyary TB

† Excluding unknown delay(%) '09 43.0 '10 53.8 '11 78.3 '12 62.3 '13 40.2

‡ Excluding unknown Tx(%) '09 0.0 '10 1.3 '11 3.8 '12 3.8 '13 1.3