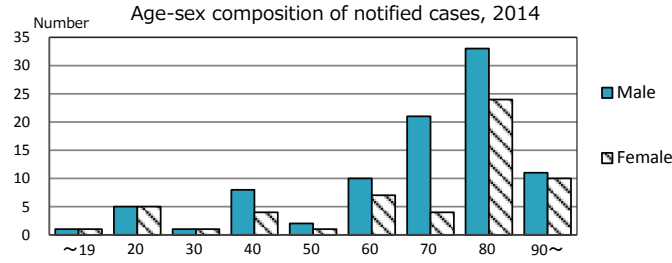
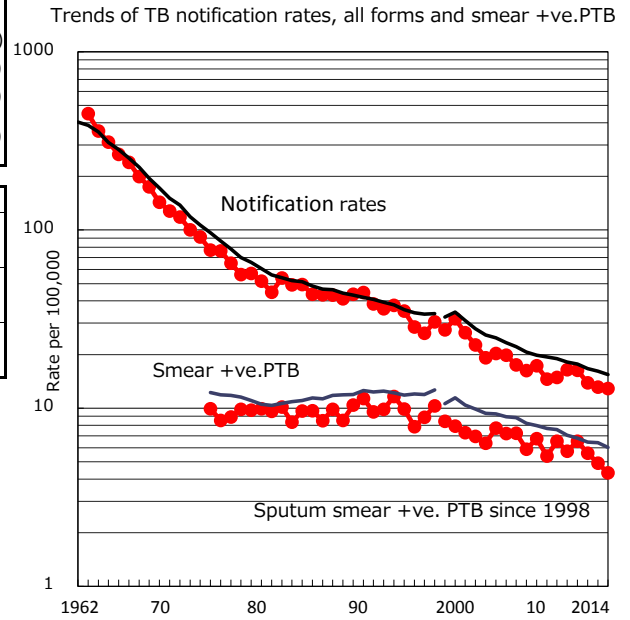
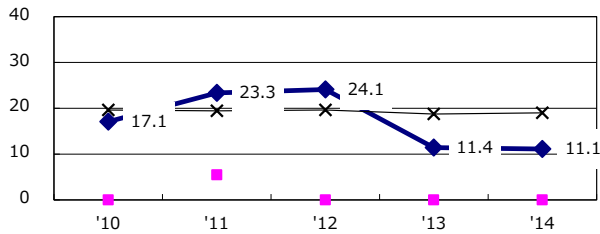


TB statistics in 2014 (Population in Ishikawa 1,155,720)	
Among newly registered : (Japan)	
Foreign borns	9 6.0% (5.6%)
TB cases with homeless history	0 0.0% (1.1%)
Male aged 35-59, without job and receiving public assistance	0 0.0% (8.0%)

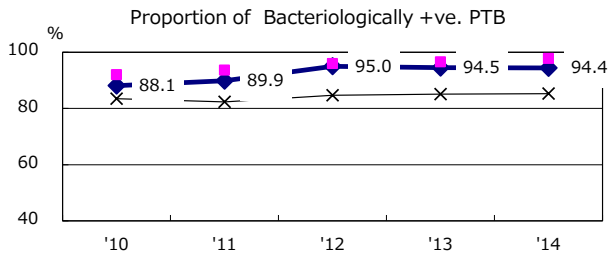
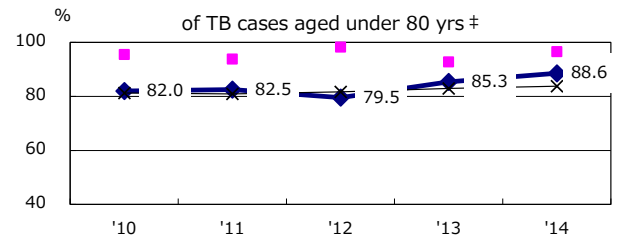
Trends	'10	'11	'12	'13	'14
Notified cases	192	190	161	152	149
Rate per 100,000 population	16.4	16.3	13.8	13.1	12.9
Sputum smear +ve. pul.cases	67	76	65	57	50
Rate per 100,000 population	5.7	6.5	5.6	4.9	4.3
Latent Tuberculosis Infection	20	82	35	44	42
Rate per 100,000 population	1.7	7.0	3.0	3.8	3.6



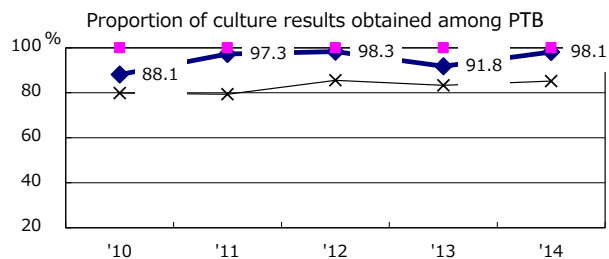
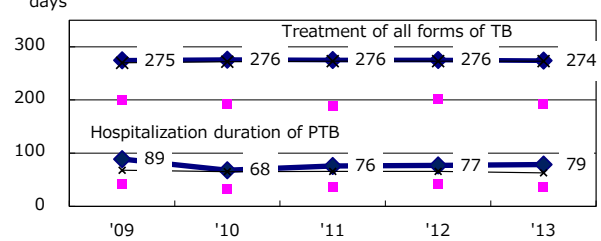
Proportion of cases with total diagnosis delay(> 3 mths) among symptomatic PTB*



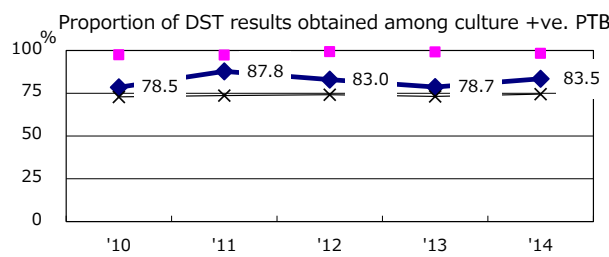
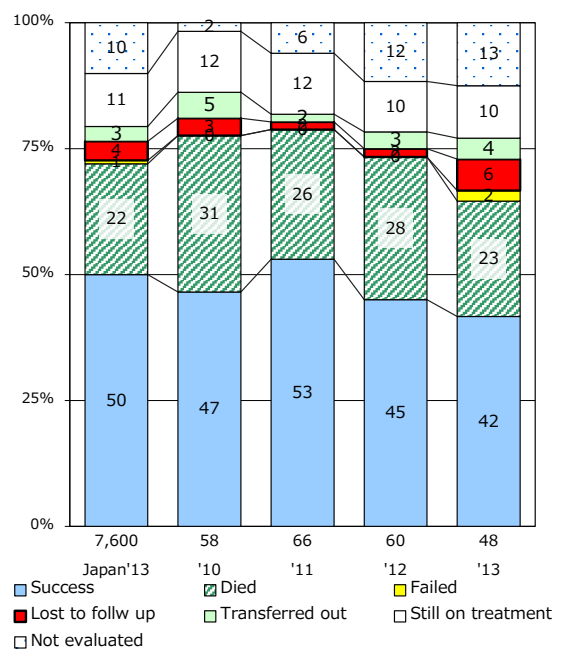
Proportion of TX with HRZ-E/S among all forms of TB cases aged under 80 yrs †



Median duration of treatment of all forms and hospitalization among PTB



Treatment outcomes of new sputum smear +ve.TB



PTB : pumonary TB

† Excluding unknown delay(%)	'10	'11	'12	'13	'14
	28.7	10.0	8.8	11.2	11.1

‡ Excluding unknown Tx(%)	'10	'11	'12	'13	'14
	2.0	2.8	1.1	2.6	1.4