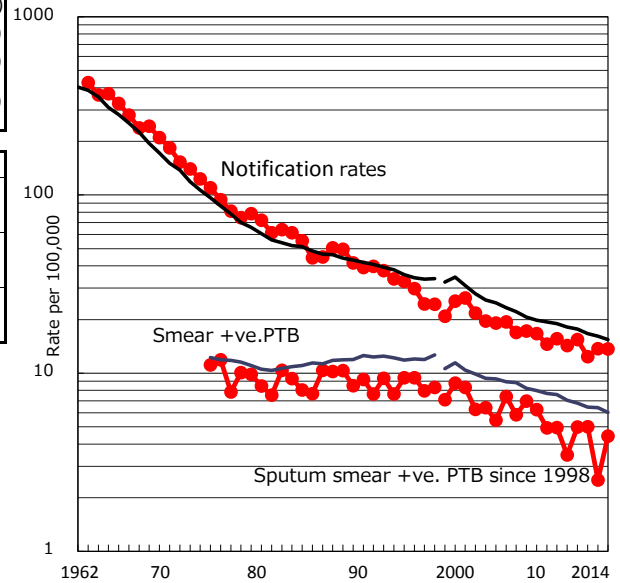


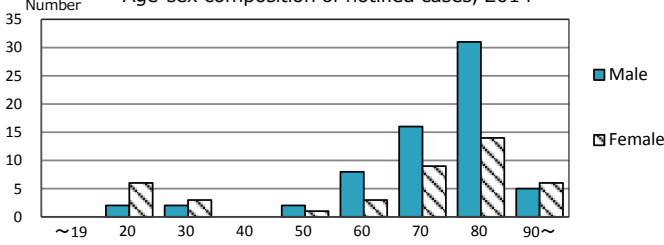
TB statistics in 2014 (Population in Fukui 789,604)	
Among newly registered : (Japan)	
Foreign borns	5 4.6% (5.6%)
TB cases with homeless history	1 0.9% (1.1%)
Male aged 35-59,without job and receiveing public assistance	0 0.0% (8.0%)

Trends	'10	'11	'12	'13	'14
Notified cases	115	124	99	109	108
Rate per 100,000 population	14.3	15.4	12.4	13.7	13.7
Sputum smear +ve. pul.cases	28	40	40	20	35
Rate per 100,000 population	3.5	5.0	5.0	2.5	4.4
Latent Tuberculosis Infection	18	48	64	45	43
Rate per 100,000 population	2.2	6.0	8.0	5.7	5.4

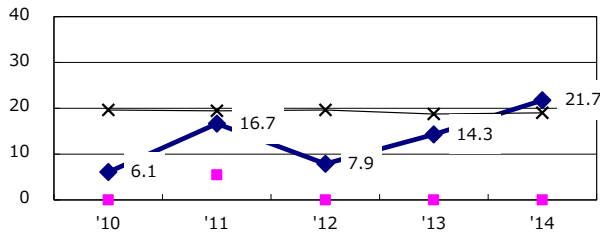
Trends of TB notification rates, all forms and smear +ve.PTB



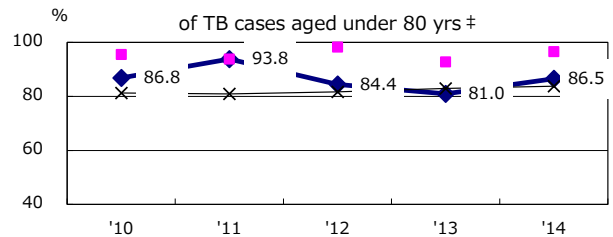
Age-sex composition of notified cases, 2014



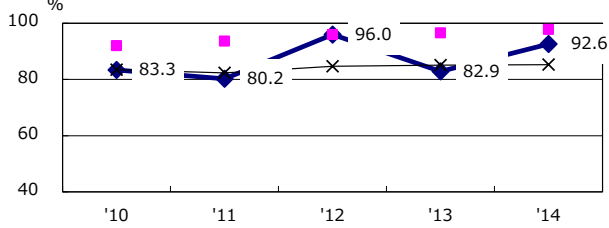
Proportion of cases with total diagnosis delay(> 3 mths) among symptomatic PTB*



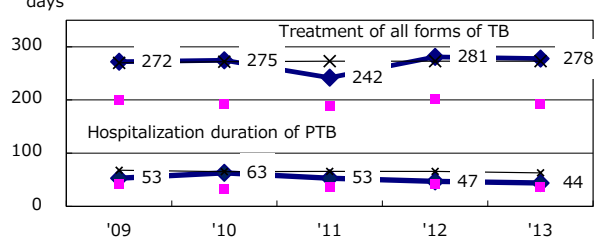
Proportion of TX with HRZ-E/S among all forms of TB cases aged under 80 yrs †



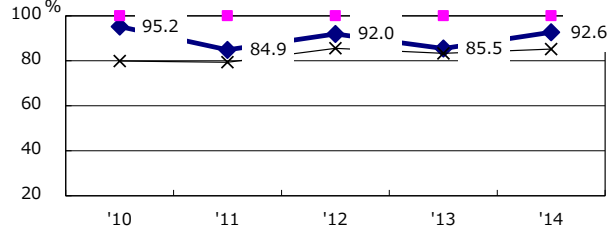
Proportion of Bacteriologically +ve. PTB



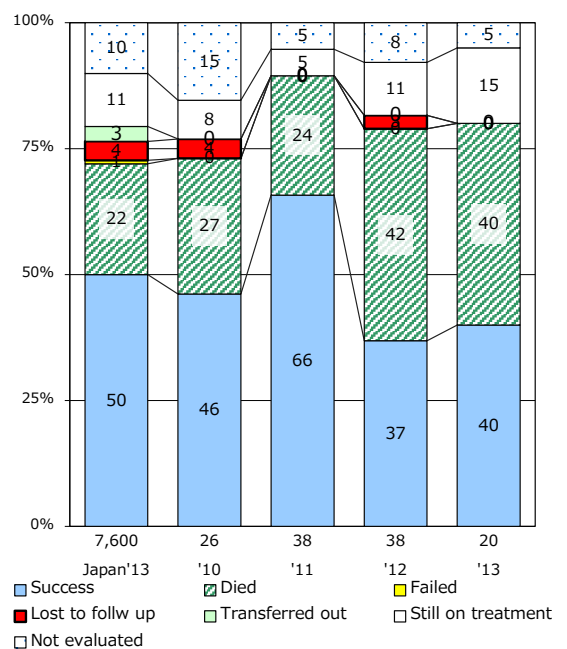
Median duration of treatment of all forms and hospitalization among PTB



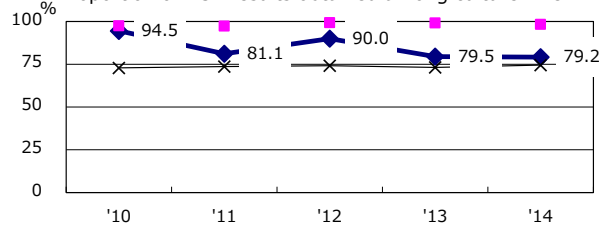
Proportion of culture results obtained among PTB



Treatment outcomes of new sputum smear +ve.TB



Proportion of DST results obtained among culture +ve. PTB



PTB : pumonary TB

† Excluding unknown delay(%)	'10	'11	'12	'13	'14
	45.9	55.6	30.9	56.3	47.7

‡ Excluding unknown Tx(%)	'10	'11	'12	'13	'14
	3.8	1.2	0.0	1.6	0.0