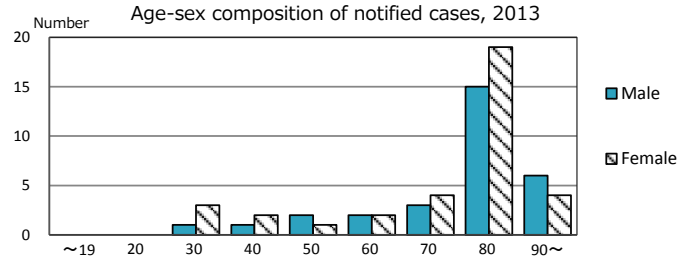
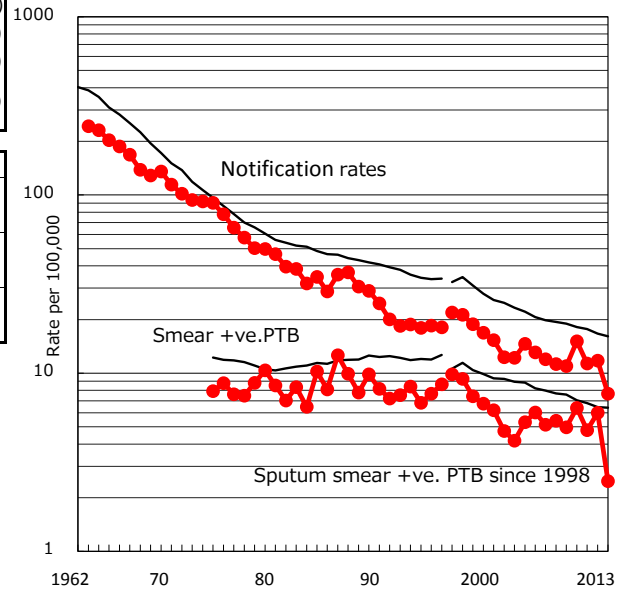


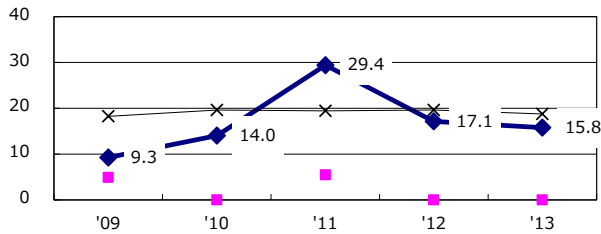
TB statistics in 2013 (Population in Yamanashi 847,300)	
Among newly registered :	(Japan)
Foreign borns	3 4.6% (5.0%)
TB cases with homeless history	0 0.0% (1.6%)
Male aged 35-59, without job and receiving public assistance	0 0.0% (10.8%)

Trends	'09	'10	'11	'12	'13
Notified cases	95	130	97	100	65
Rate per 100,000 population	11.0	15.1	11.3	11.7	7.7
Sputum smear +ve. pul.cases	43	55	41	51	21
Rate per 100,000 population	5.0	6.4	4.8	6.0	2.5
Latent Tuberculosis Infection	3	23	42	46	26
Rate per 100,000 population	0.3	2.7	4.9	5.4	3.1

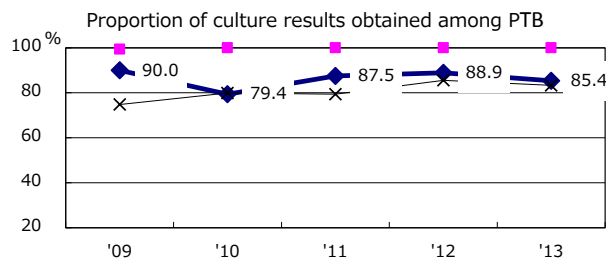
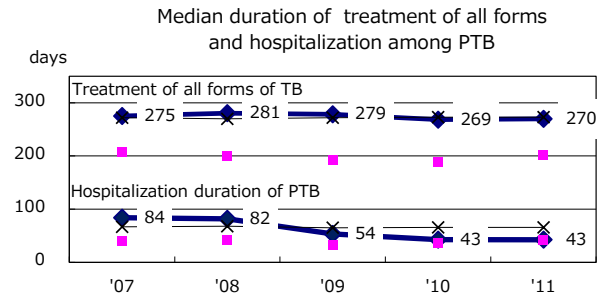
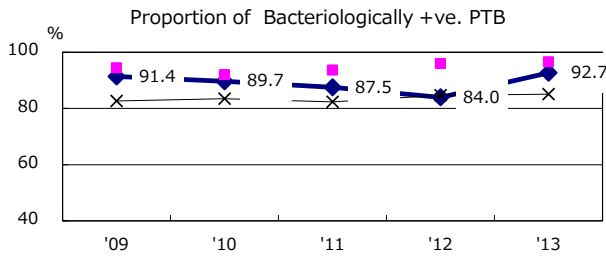
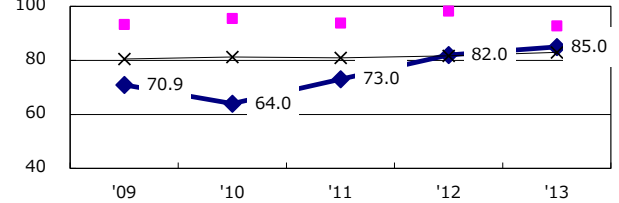
Trends of TB notification rates, all forms and smear +ve.PTB



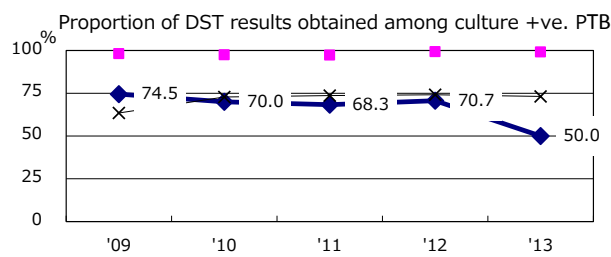
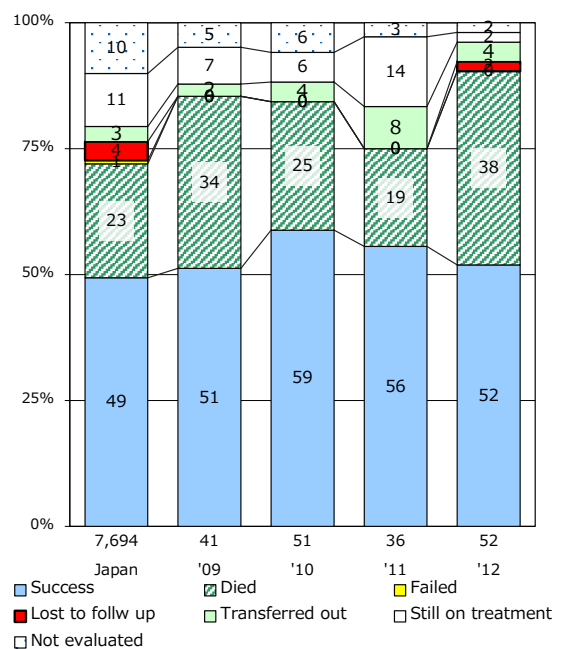
Proportion of cases with total diagnosis delay(> 3 mths) among symptomatic PTB



Proportion of TX with HRZ-E/S among all forms of TB cases aged under 80 yrs †



Treatment outcomes of new sputum smear +ve.TB



PTB : pumonyary TB

† Excluding unknown delay(%)	'09	'10	'11	'12	'13
	5.3	29.6	34.6	40.7	42.4

‡ Excluding unknown Tx(%)	'09	'10	'11	'12	'13
	0.0	1.3	1.6	3.2	4.8