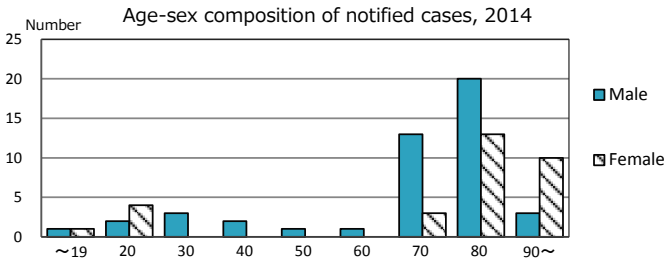
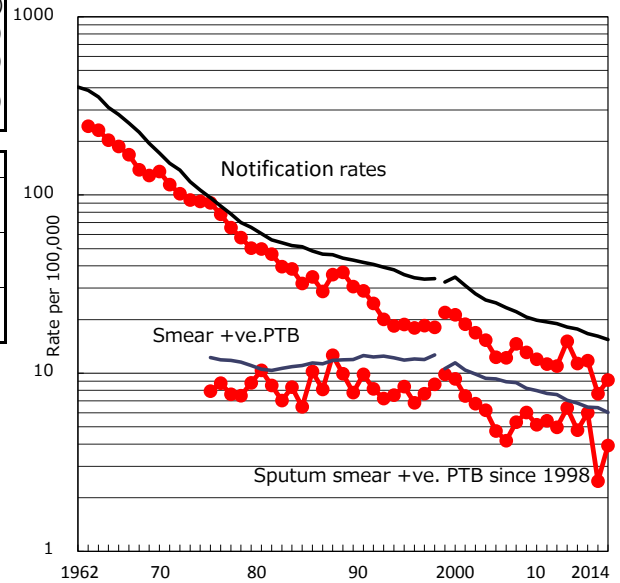


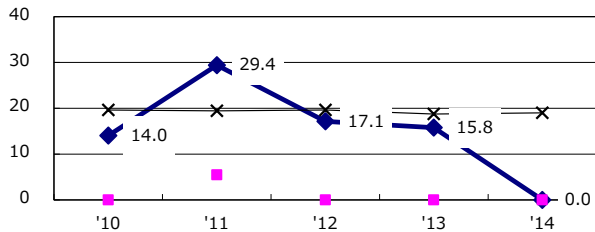
TB statistics in 2014 (Population in Yamanashi 841,224)	
Among newly registered :	(Japan)
Foreign borns	4 5.2% (5.6%)
TB cases with homeless history	0 0.0% (1.1%)
Male aged 35-59,without job and receiveing public assistance	1 16.7% (8.0%)

Trends	'10	'11	'12	'13	'14
Notified cases	130	97	100	65	77
Rate per 100,000 population	15.1	11.3	11.7	7.7	9.2
Sputum smear +ve. pul.cases	55	41	51	21	33
Rate per 100,000 population	6.4	4.8	6.0	2.5	3.9
Latent Tuberculosis Infection	23	42	46	26	16
Rate per 100,000 population	2.7	4.9	5.4	3.1	1.9

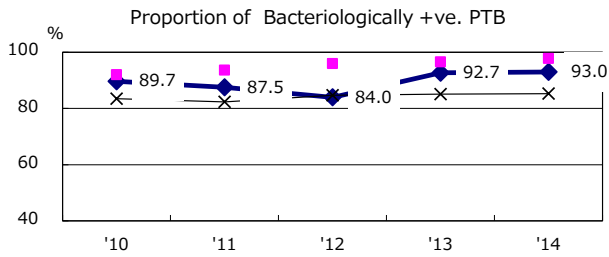
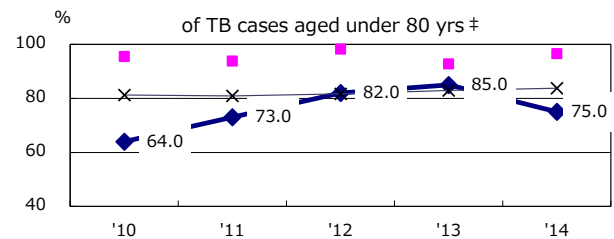
Trends of TB notification rates, all forms and smear +ve.PTB



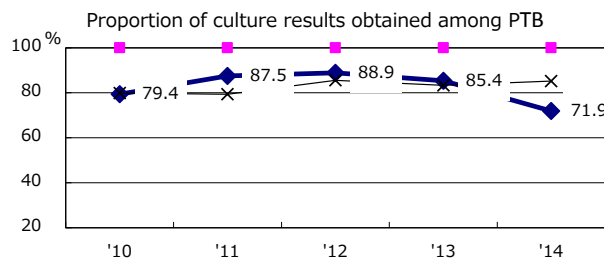
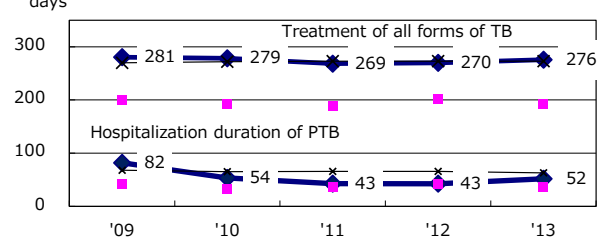
Proportion of cases with total diagnosis delay(> 3 mths) among symptomatic PTB*



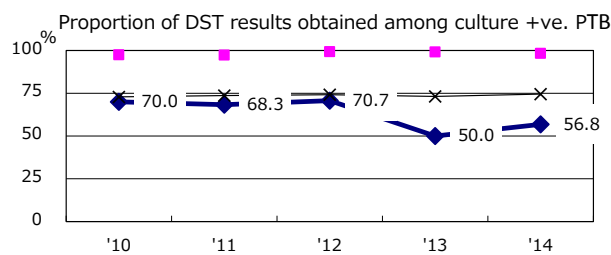
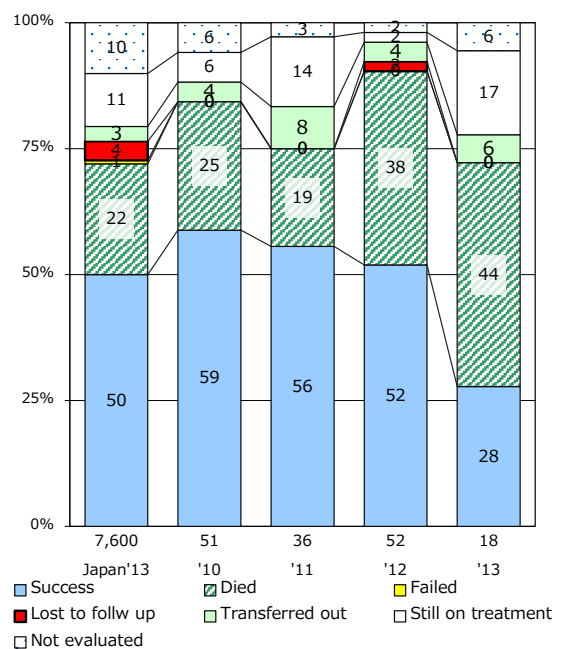
Proportion of TX with HRZ-E/S among all forms of TB cases aged under 80 yrs †



Median duration of treatment of all forms and hospitalization among PTB



Treatment outcomes of new sputum smear +ve.TB



PTB : pumonyary TB

† Excluding unknown delay(%)	'10	'11	'12	'13	'14
	29.6	34.6	40.7	42.4	89.4

‡ Excluding unknown Tx(%)	'10	'11	'12	'13	'14
	1.3	1.6	3.2	4.8	9.7