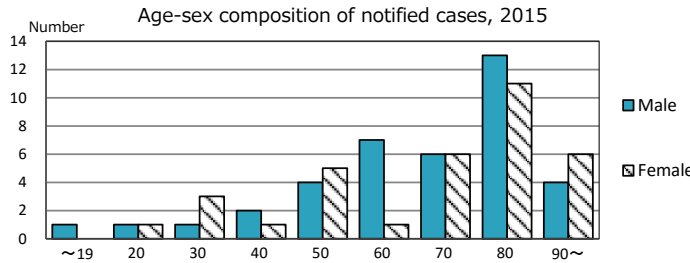
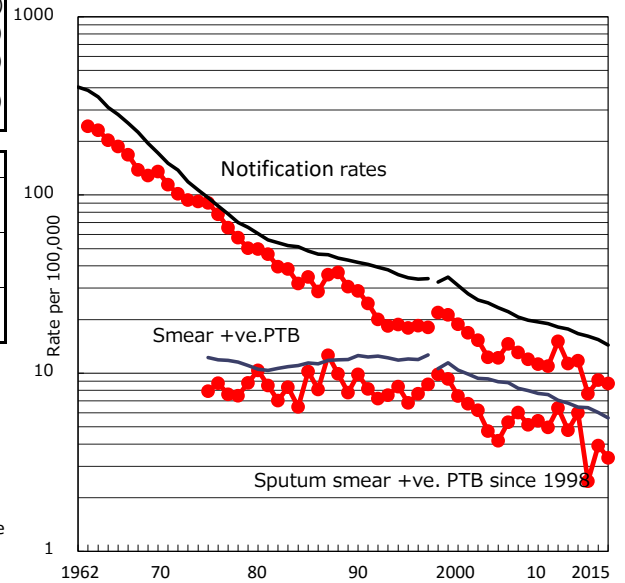


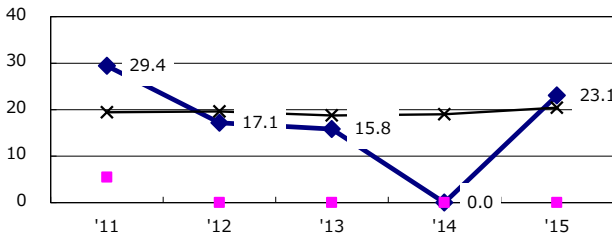
TB statistics in 2015 (Population in Yamanashi 835,165)	
Among newly notified :	(Japan)
Foreign borns	7 9.6% (6.4%)
TB cases with homeless history	0 0.0% (0.9%)
Male aged 35-59, without job and receiving public assistance	0 0.0% (9.0%)

Trends	'11	'12	'13	'14	'15
Notified cases	97	100	65	77	73
Rate per 100,000 population	11.3	11.7	7.7	9.2	8.7
Sputum smear +ve. PTB	41	51	21	33	28
Rate per 100,000 population	4.8	6.0	2.5	3.9	3.4
Latent Tuberculosis Infection	42	46	26	16	40
Rate per 100,000 population	4.9	5.4	3.1	1.9	4.8

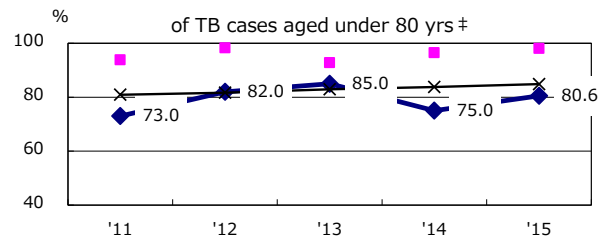
Trends of TB notification rates, all forms and smear +ve. PTB



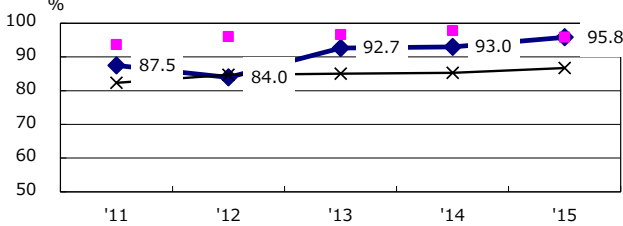
Proportion of cases with total diagnosis delay (> 3 mths) among symptomatic PTB*



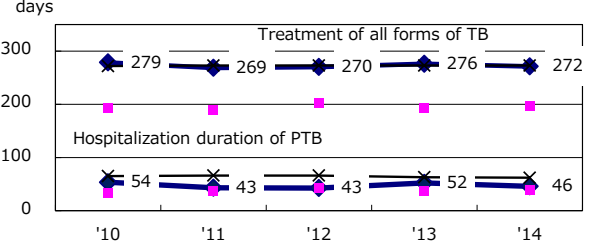
Proportion of TX with HRZ-E/S among all forms of TB cases aged under 80 yrs †



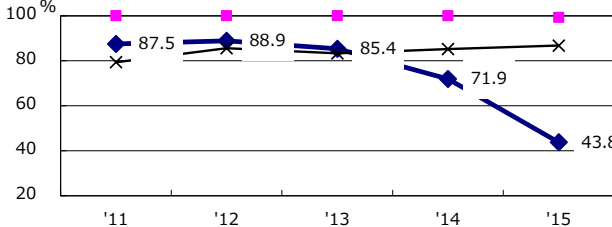
Proportion of Bacteriologically +ve. PTB



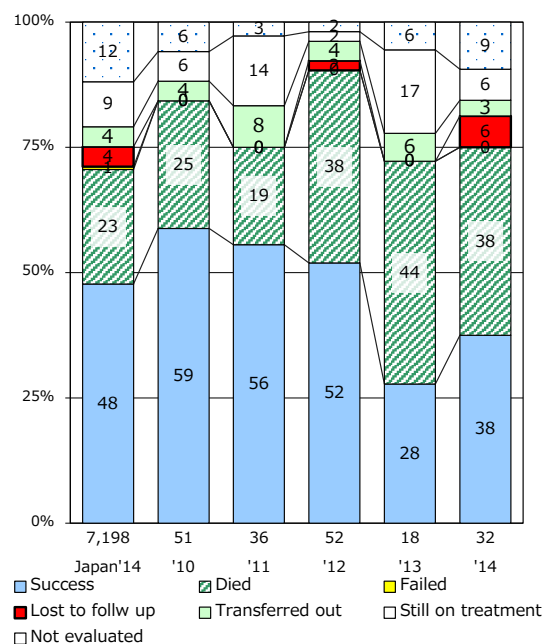
Median duration of treatment of all forms and hospitalization among PTB



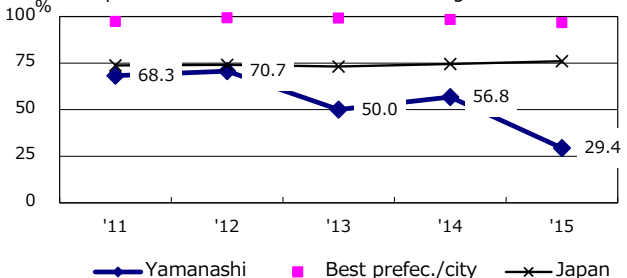
Proportion of culture results obtained among PTB



Treatment outcomes of new sputum smear +ve. TB



Proportion of DST results obtained among culture +ve. PTB



PTB : pulmonary TB

† Excluding unknown delay(%)	'11	'12	'13	'14	'15
	34.6	40.7	42.4	89.4	60.6

‡ Excluding unknown Tx(%)	'11	'12	'13	'14	'15
	1.6	3.2	4.8	9.7	7.7