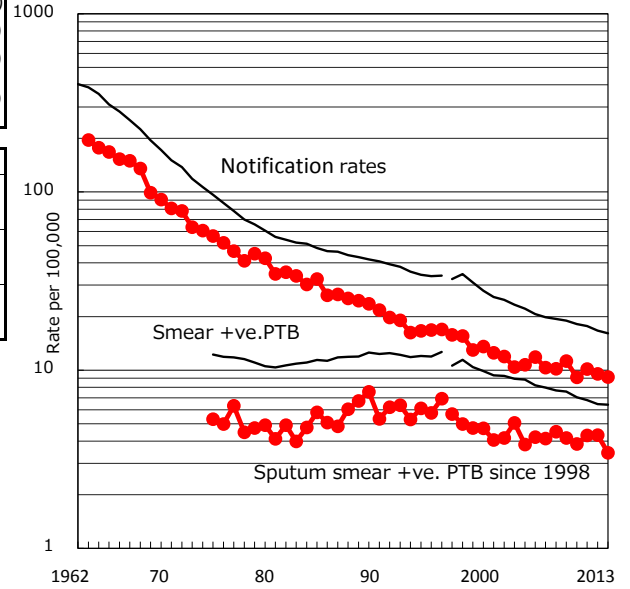


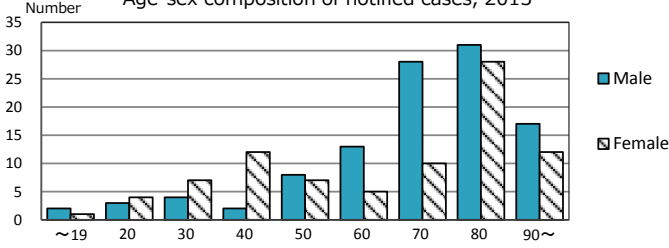
TB statistics in 2013 (Population in Nagano 2,121,590)	
Among newly registered : (Japan)	
Foreign borns	10 5.2% (5.0%)
TB cases with homeless history	0 0.0% (1.6%)
Male aged 35-59,without job and receiveing public assistance	1 7.1% (10.8%)

Trends	'09	'10	'11	'12	'13
Notified cases	243	196	217	203	194
Rate per 100,000 population	11.3	9.1	10.1	9.5	9.1
Sputum smear +ve. pul.cases	90	83	92	92	73
Rate per 100,000 population	4.2	3.9	4.3	4.3	3.4
Latent Tuberculosis Infection	63	72	174	131	132
Rate per 100,000 population	2.9	3.3	8.1	6.1	6.2

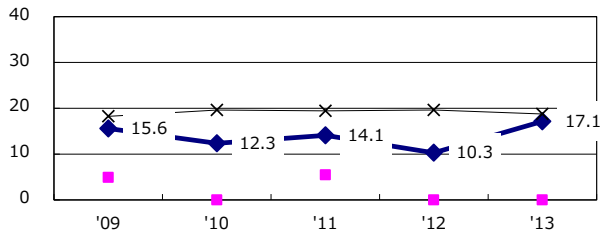
Trends of TB notification rates, all forms and smear +ve.PTB



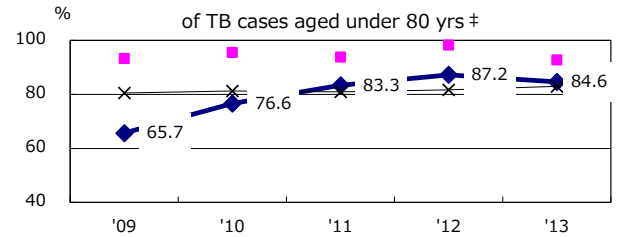
Age-sex composition of notified cases, 2013



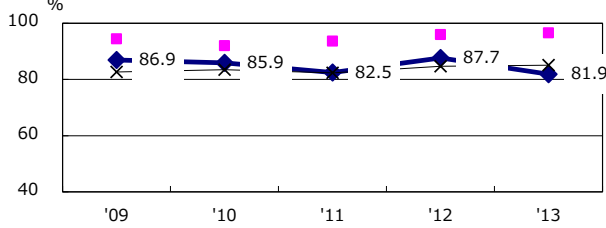
Proportion of cases with total diagnosis delay(> 3 mths) among symptomatic PTB



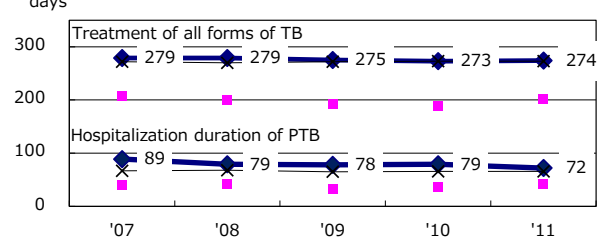
Proportion of TX with HRZ-E/S among all forms of TB cases aged under 80 yrs †



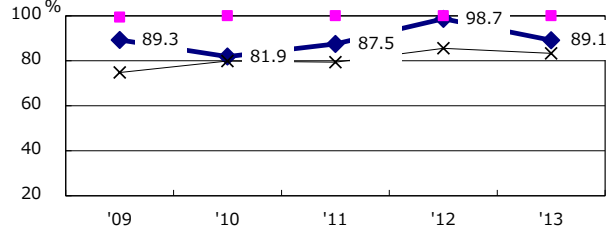
Proportion of Bacteriologically +ve. PTB



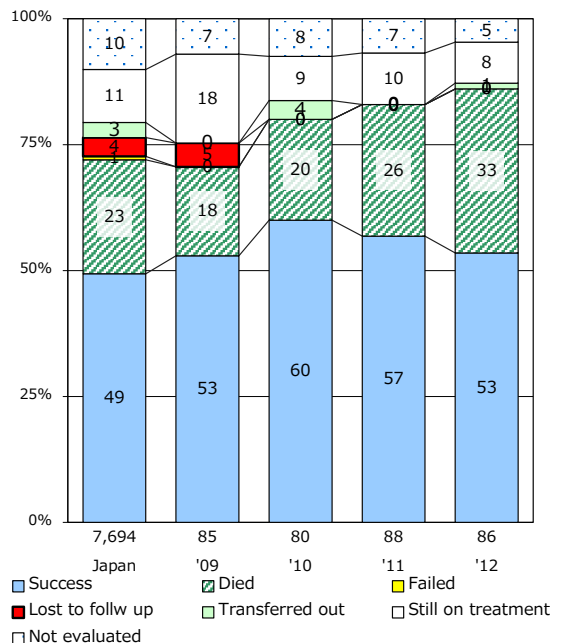
Median duration of treatment of all forms and hospitalization among PTB



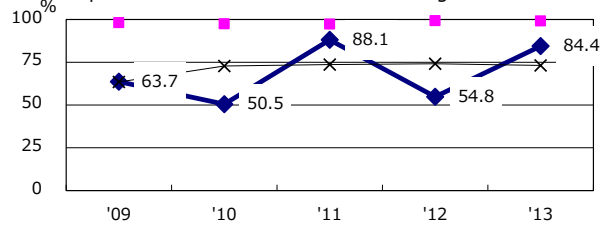
Proportion of culture results obtained among PTB



Treatment outcomes of new sputum smear +ve.TB



Proportion of DST results obtained among culture +ve. PTB



PTB : pumonary TB

† Excluding unknown delay(%)	'09	'10	'11	'12	'13
	42.1	40.2	45.8	15.1	33.3

‡ Excluding unknown Tx(%)	'09	'10	'11	'12	'13
	2.1	0.9	1.6	1.1	1.9