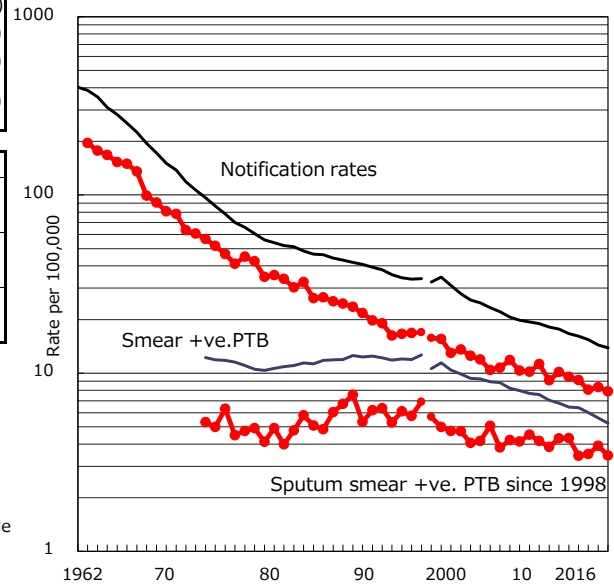


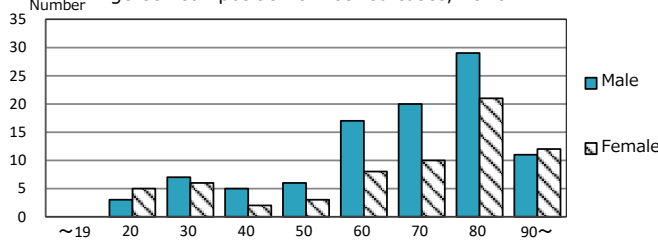
TB statistics in 2016 ( Population in Nagano 2,088,065 )	
Among newly notified : (Japan)	
Foreign borns	13 7.9% (7.6%)
TB cases with homeless history	0 0.0% (1.0%)
Male aged 35-59,without job and receiving public assistance	0 0.0% (7.7%)

Trends	'12	'13	'14	'15	2016
Notified cases	203	194	170	175	165
Rate per 100,000 population	9.5	9.1	8.1	8.3	7.9
Sputum smear +ve. PTB	92	73	74	82	72
Rate per 100,000 population	4.3	3.4	3.5	3.9	3.4
Latent Tuberculosis Infection	131	132	158	103	123
Rate per 100,000 population	6.1	6.2	7.5	4.9	5.9

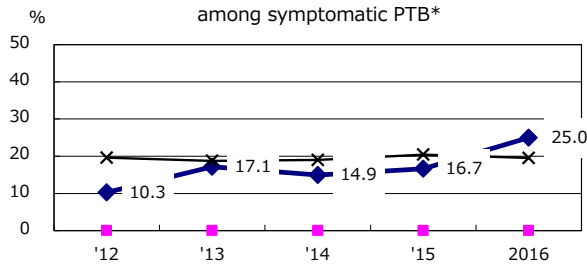
Trends of TB notification rates, all forms and smear +ve.PTB



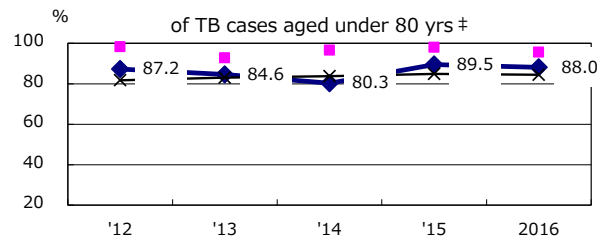
Age-sex composition of notified cases, 2016



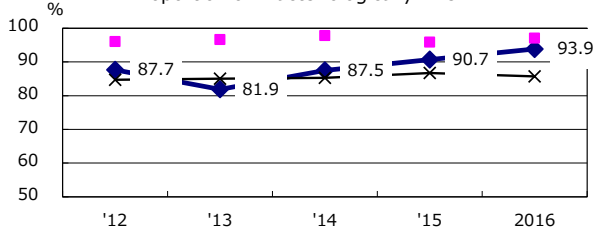
Proportion of cases with total diagnosis delay(> 3 mths) among symptomatic PTB\*



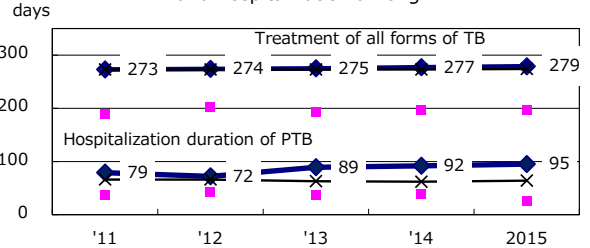
Proportion of TX with HRZ-E/S among all forms



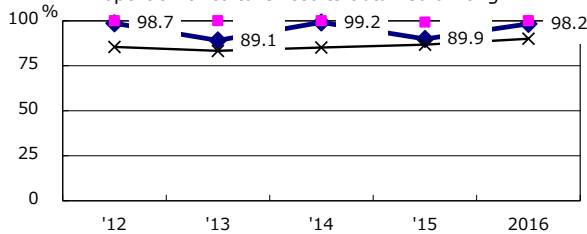
Proportion of Bacteriologically +ve. PTB



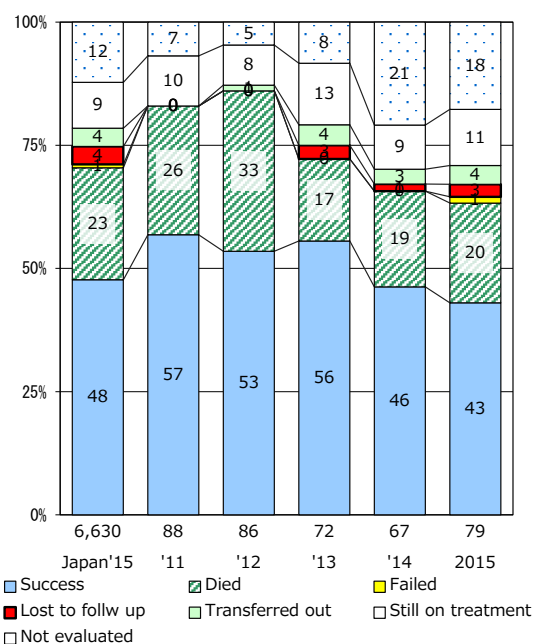
Median duration of treatment of all forms and hospitalization among PTB



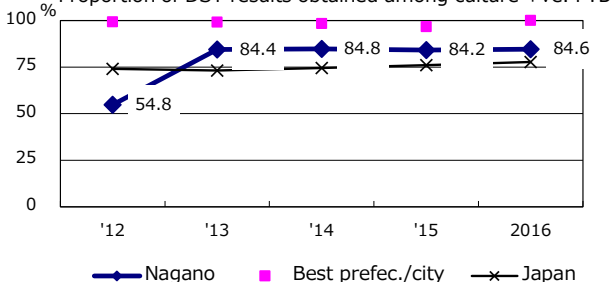
Proportion of culture results obtained among PTB



Treatment outcomes of new sputum smear +ve.TB



Proportion of DST results obtained among culture +ve. PTB



PTB : pulmonary TB

† Excluding unknown delay(%)	'12	'13	'14	'15	2016
	15.1	33.3	5.4	17.6	22.6

‡ Excluding unknown Tx(%)	'12	'13	'14	'15	2016
	1.1	1.9	2.6	1.0	0.0