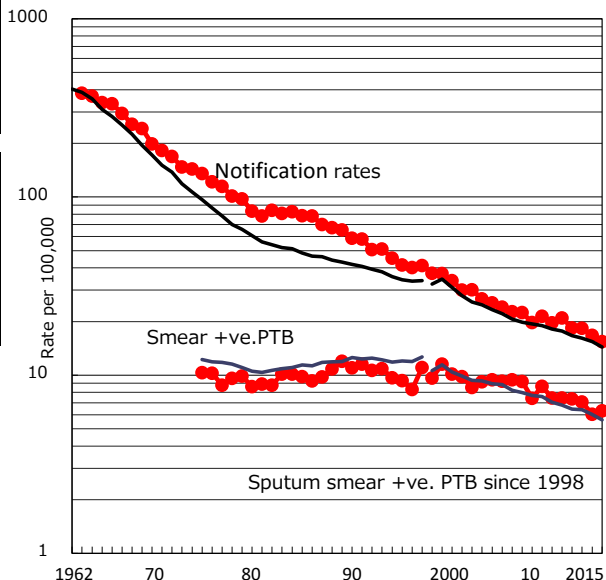


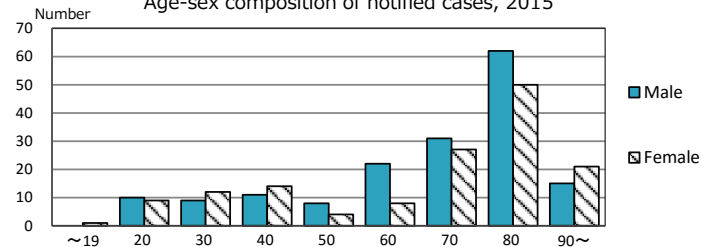
TB statistics in 2015	(Population in Gifu	2,032,533)
Among newly notified :		(Japan)
Foreign borns	29	9.2% (6.4%)
TB cases with homeless history	0	0.0% (0.9%)
Male aged 35-59, without job and receiving public assistance	0	0.0% (9.0%)

Trends	'11	'12	'13	'14	'15
Notified cases	434	380	376	342	314
Rate per 100,000 population	21.0	18.4	18.3	16.8	15.4
Sputum smear +ve. PTB	154	152	145	123	128
Rate per 100,000 population	7.4	7.4	7.1	6.0	6.3
Latent Tuberculosis Infection	144	89	75	80	102
Rate per 100,000 population	7.0	4.3	3.7	3.9	5.0

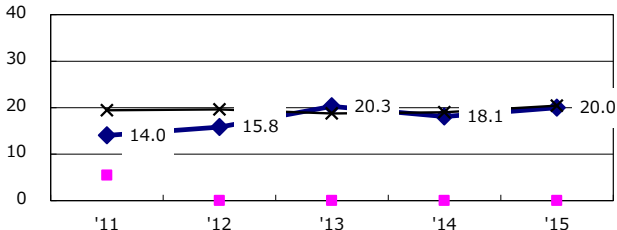
Trends of TB notification rates, all forms and smear +ve. PTB



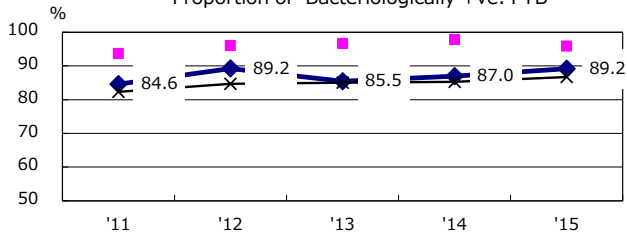
Age-sex composition of notified cases, 2015



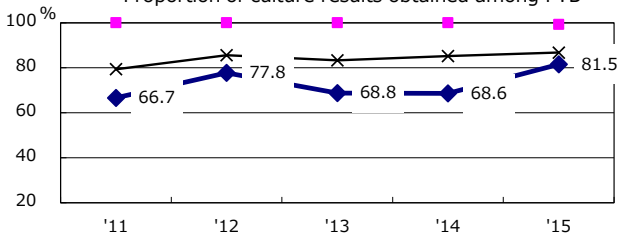
Proportion of cases with total diagnosis delay (> 3 mths) among symptomatic PTB*



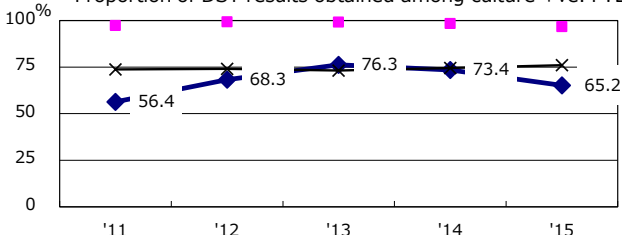
Proportion of Bacteriologically +ve. PTB



Proportion of culture results obtained among PTB



Proportion of DST results obtained among culture +ve. PTB

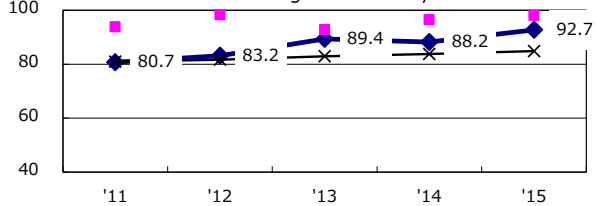


Legend: Gifu (blue diamond), Best prefect./city (pink square), Japan (black cross)

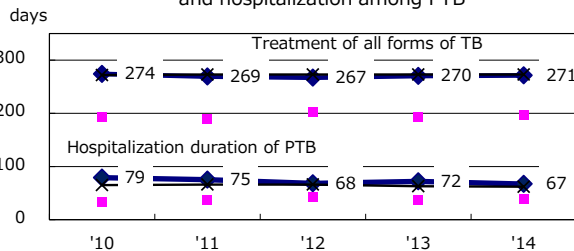
PTB : pulmonary TB

† Excluding unknown delay(%)	'11	'12	'13	'14	'15
	27.8	22.3	28.5	24.6	30.1

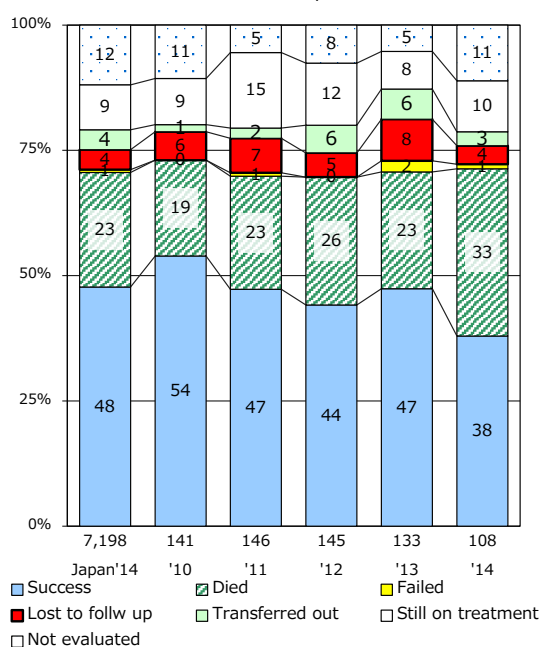
Proportion of TX with HRZ-E/S among all forms of TB cases aged under 80 yrs †



Median duration of treatment of all forms and hospitalization among PTB



Treatment outcomes of new sputum smear +ve. TB



‡ Excluding unknown Tx(%)	'11	'12	'13	'14	'15
	0.8	1.4	0.5	0.0	0.6