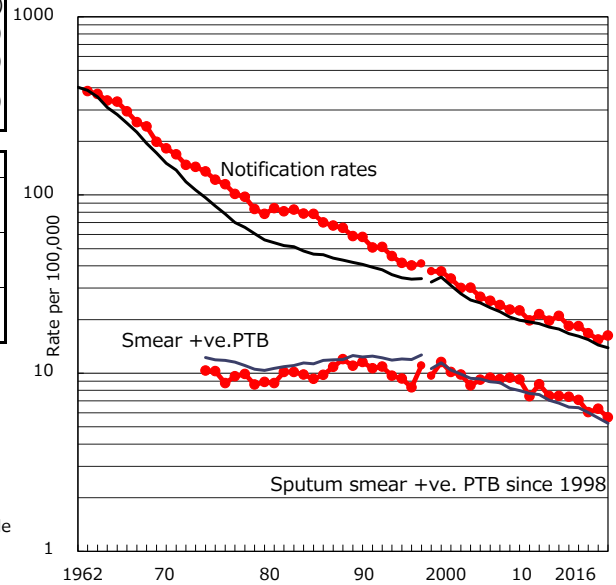


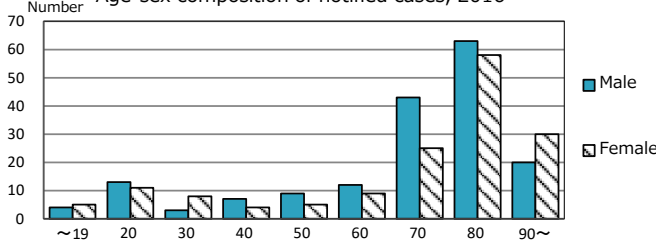
TB statistics in 2016 ( Population in Gifu		2,021,872 )
Among newly notified :		(Japan)
Foreign borns	33	10.0% (7.6%)
TB cases with homeless history	0	0.0% (1.0%)
Male aged 35-59, without job and receiving public assistance	0	0.0% (7.7%)

Trends	'12	'13	'14	'15	2016
Notified cases	380	376	342	314	329
Rate per 100,000 population	18.4	18.3	16.8	15.4	16.3
Sputum smear +ve. PTB	152	145	123	128	114
Rate per 100,000 population	7.4	7.1	6.0	6.3	5.6
Latent Tuberculosis Infection	89	75	80	102	135
Rate per 100,000 population	4.3	3.7	3.9	5.0	6.7

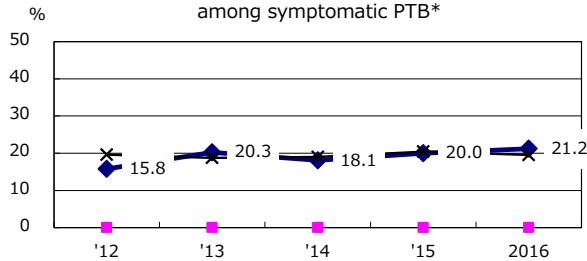
Trends of TB notification rates, all forms and smear +ve.PTB



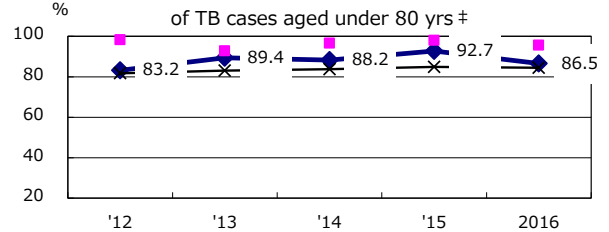
Age-sex composition of notified cases, 2016



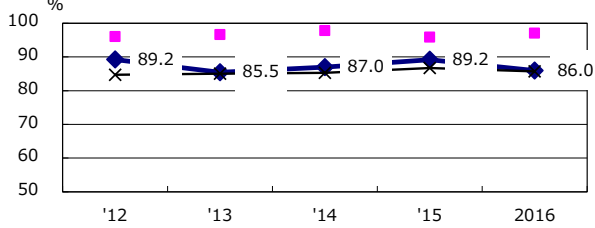
Proportion of cases with total diagnosis delay(> 3 mths) among symptomatic PTB\*



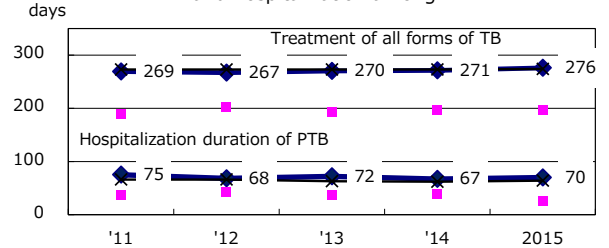
Proportion of TX with HRZ-E/S among all forms



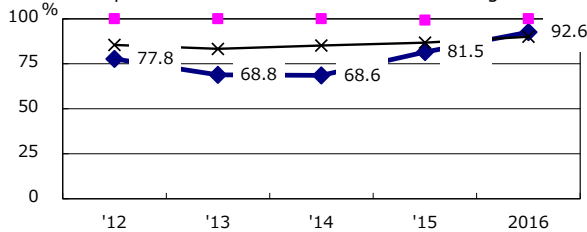
Proportion of Bacteriologically +ve. PTB



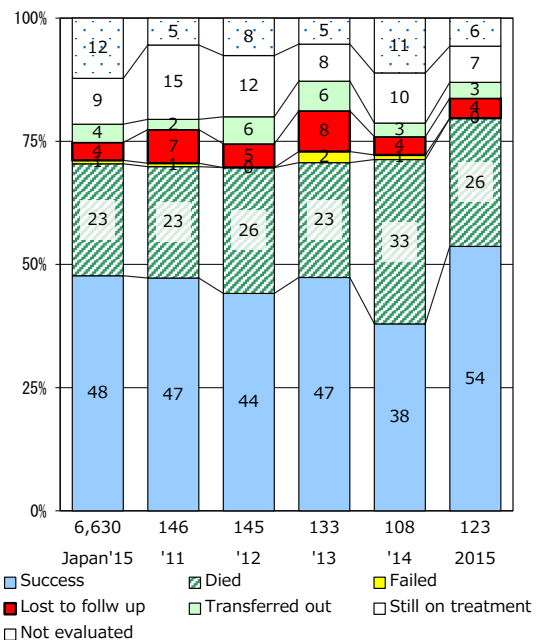
Median duration of treatment of all forms and hospitalization among PTB



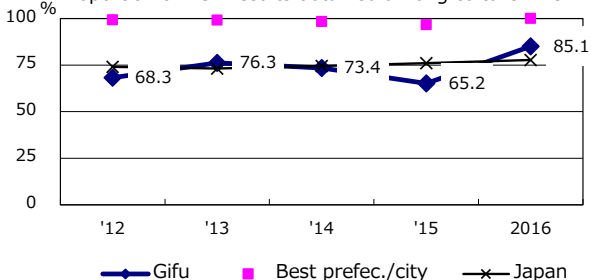
Proportion of culture results obtained among PTB



Treatment outcomes of new sputum smear +ve.TB



Proportion of DST results obtained among culture +ve. PTB



PTB : pulmonary TB

† Excluding unknown delay(%)	'12	'13	'14	'15	2016
	22.3	28.5	24.6	30.1	21.4

‡ Excluding unknown Tx(%)	'12	'13	'14	'15	2016
	1.4	0.5	0.0	0.6	1.3