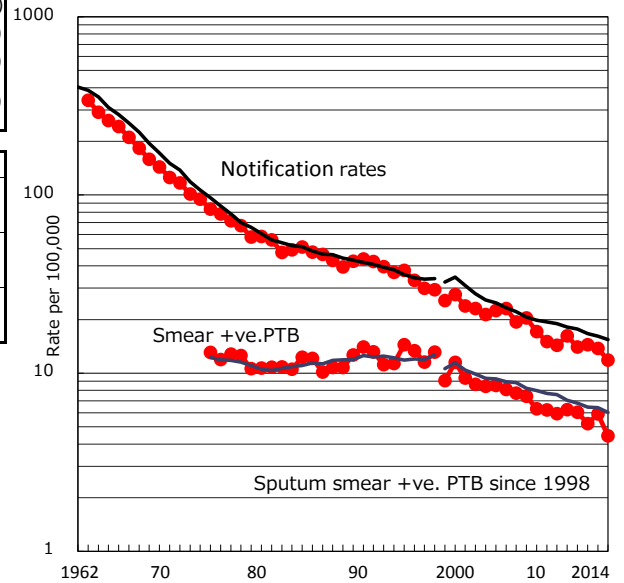


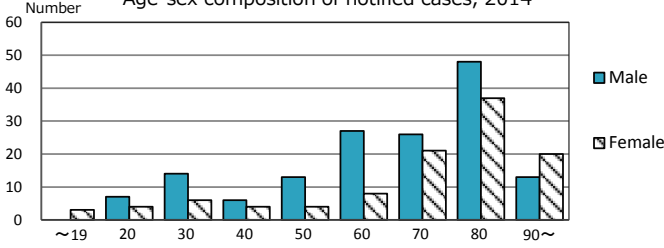
TB statistics in 2014 (Population in Shizuoka 2,207,608)	
Among newly registered :	(Japan)
Foreign borns	17 6.5% (5.6%)
TB cases with homeless history	2 0.8% (1.1%)
Male aged 35-59,without job and receiveing public assistance	0 0.0% (8.0%)

Trends	'10	'11	'12	'13	'14
Notified cases	361	314	318	306	261
Rate per 100,000 population	16.2	14.0	14.4	13.8	11.8
Sputum smear +ve. pul.cases	139	135	115	131	98
Rate per 100,000 population	6.2	6.0	5.2	5.9	4.4
Latent Tuberculosis Infection	47	57	80	74	81
Rate per 100,000 population	2.1	2.5	3.6	3.3	3.7

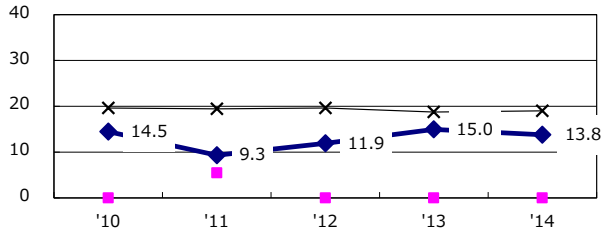
Trends of TB notification rates, all forms and smear +ve.PTB



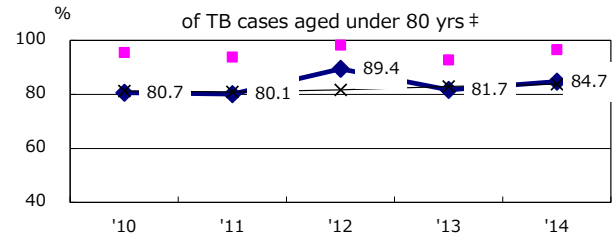
Age-sex composition of notified cases, 2014



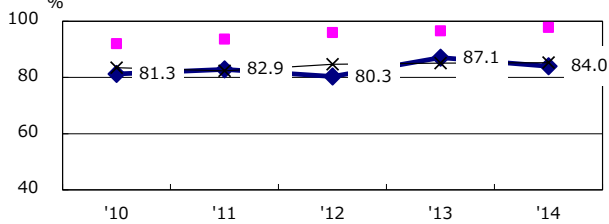
Proportion of cases with total diagnosis delay(> 3 mths) among symptomatic PTB*



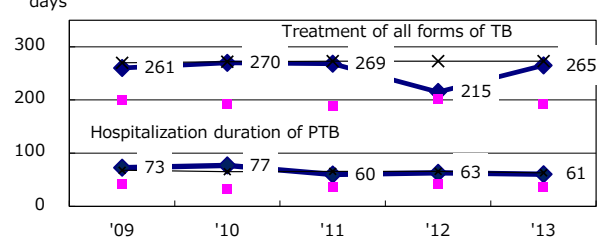
Proportion of TX with HRZ-E/S among all forms of TB cases aged under 80 yrs †



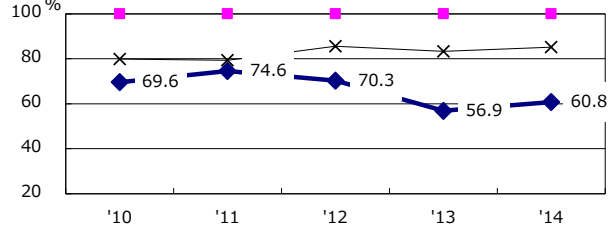
Proportion of Bacteriologically +ve. PTB



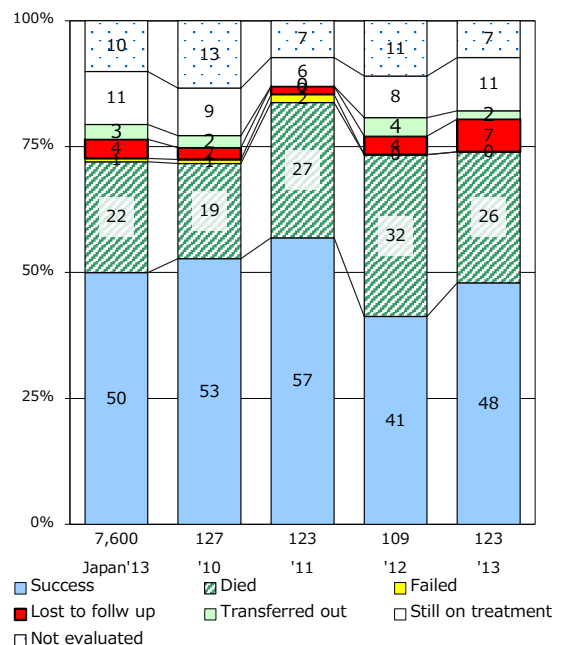
Median duration of treatment of all forms and hospitalization among PTB



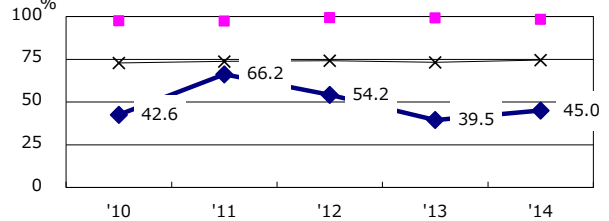
Proportion of culture results obtained among PTB



Treatment outcomes of new sputum smear +ve.TB



Proportion of DST results obtained among culture +ve. PTB



PTB : pumonyary TB

† Excluding unknown delay(%)	'10	'11	'12	'13	'14
	31.9	11.5	25.0	40.9	38.7

‡ Excluding unknown Tx(%)	'10	'11	'12	'13	'14
	4.9	1.7	6.3	6.4	8.4