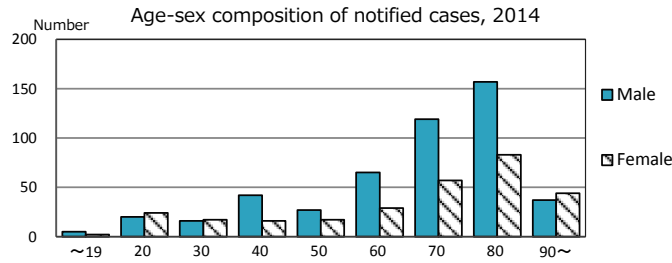
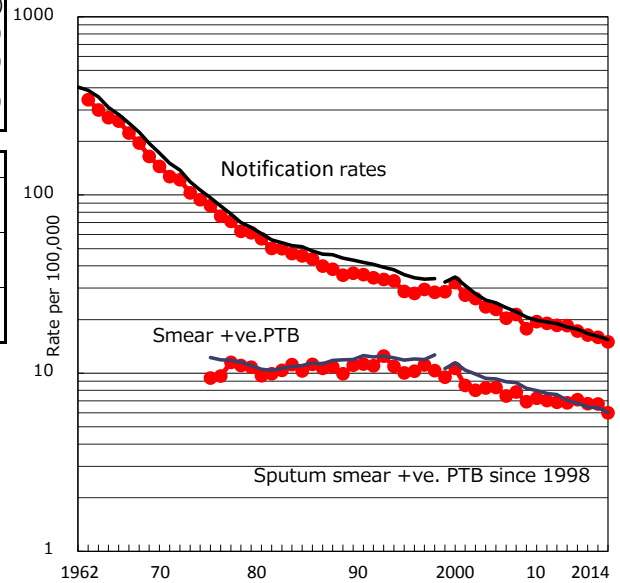


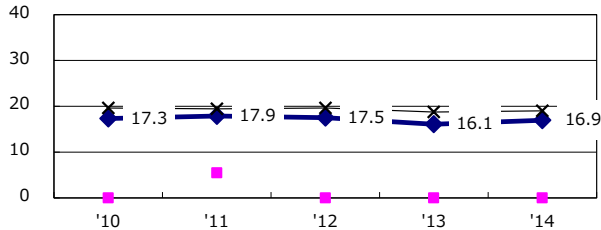
TB statistics in 2014 (Population in Aichi 5,178,761)	
Among newly registered : (Japan)	
Foreign borns	56 7.2% (5.6%)
TB cases with homeless history	7 0.9% (1.1%)
Male aged 35-59,without job and receiveing public assistance	5 5.9% (8.0%)

Trends	'10	'11	'12	'13	'14
Notified cases	952	889	844	823	777
Rate per 100,000 population	18.5	17.3	16.4	15.9	15.0
Sputum smear +ve. pul.cases	350	366	348	347	310
Rate per 100,000 population	6.8	7.1	6.7	6.7	6.0
Latent Tuberculosis Infection	191	400	285	286	325
Rate per 100,000 population	3.7	7.8	5.5	5.5	6.3

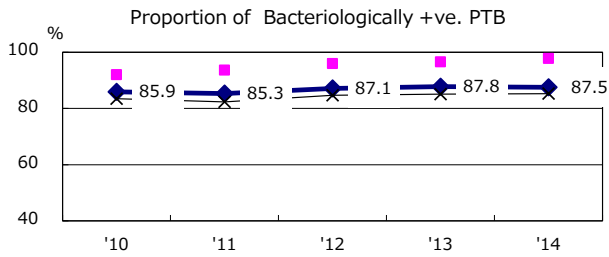
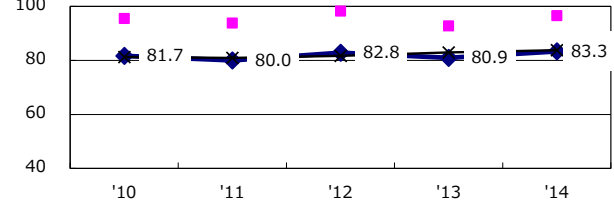
Trends of TB notification rates, all forms and smear +ve.PTB



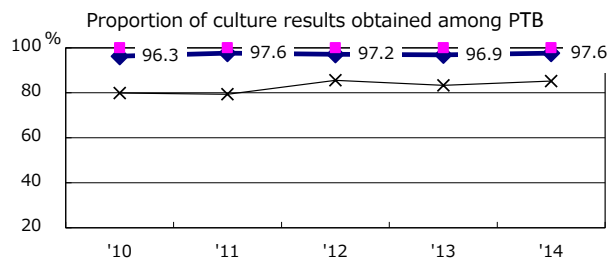
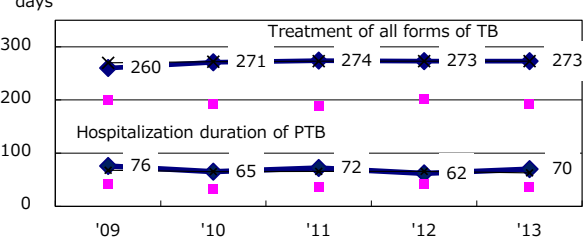
Proportion of cases with total diagnosis delay(> 3 mths) among symptomatic PTB*



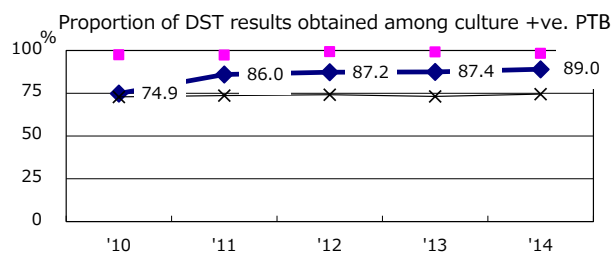
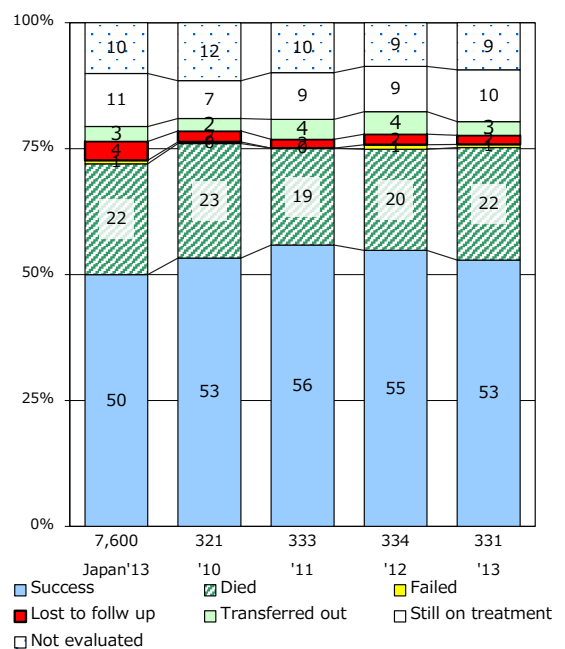
Proportion of TX with HRZ-E/S among all forms of TB cases aged under 80 yrs †



Median duration of treatment of all forms and hospitalization among PTB



Treatment outcomes of new sputum smear +ve.TB



PTB : pumonary TB

† Excluding unknown delay(%)	'10	'11	'12	'13	'14
	18.2	30.6	42.0	36.4	30.1

‡ Excluding unknown Tx(%)	'10	'11	'12	'13	'14
	2.2	2.5	1.6	1.8	2.6