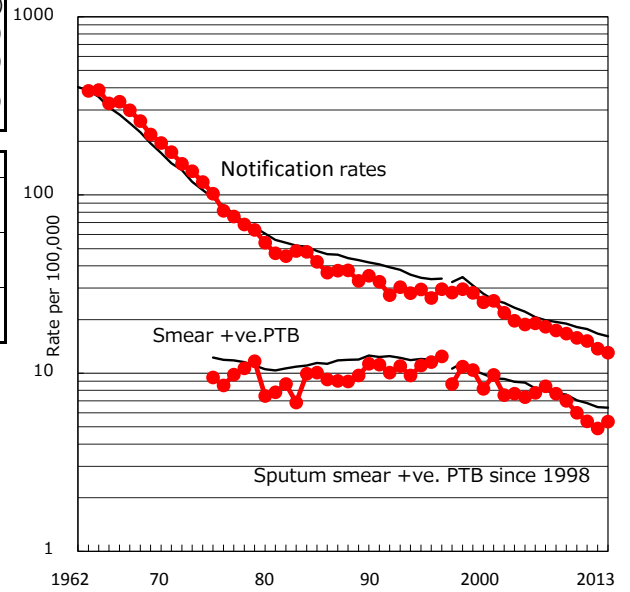


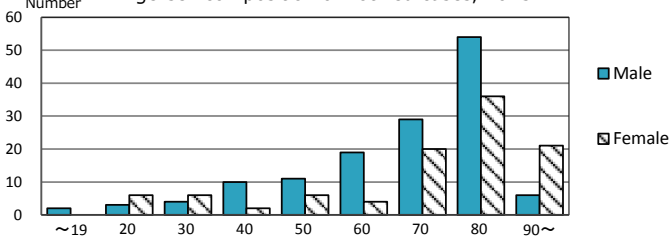
TB statistics in 2013 (Population in Mie 1,833,197)	
Among newly registered : (Japan)	
Foreign borns	13 5.4% (5.0%)
TB cases with homeless history	1 0.4% (1.6%)
Male aged 35-59,without job and receiving public assistance	3 12.0% (10.8%)

Trends	'09	'10	'11	'12	'13
Notified cases	312	293	280	252	239
Rate per 100,000 population	16.7	15.8	15.2	13.7	13.0
Sputum smear +ve. pul.cases	131	111	99	90	98
Rate per 100,000 population	7.0	6.0	5.4	4.9	5.3
Latent Tuberculosis Infection	52	33	90	72	66
Rate per 100,000 population	2.8	1.8	4.9	3.9	3.6

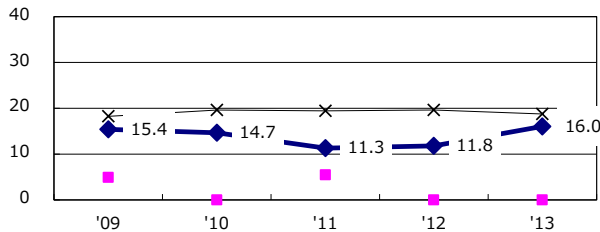
Trends of TB notification rates, all forms and smear +ve.PTB



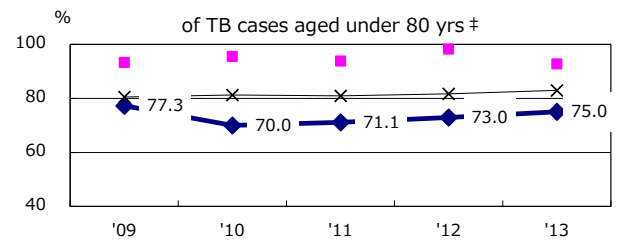
Age-sex composition of notified cases, 2013



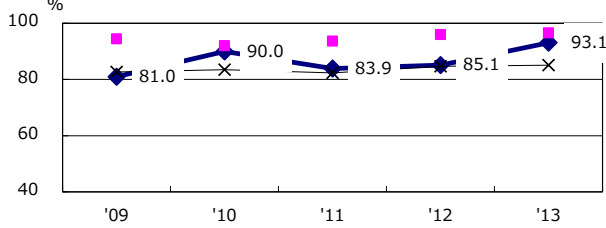
Proportion of cases with total diagnosis delay(> 3 mths) among symptomatic PTB



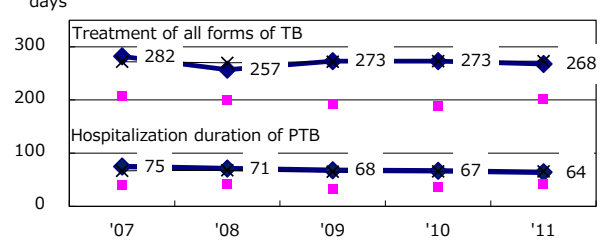
Proportion of TX with HRZ-E/S among all forms of TB cases aged under 80 yrs †



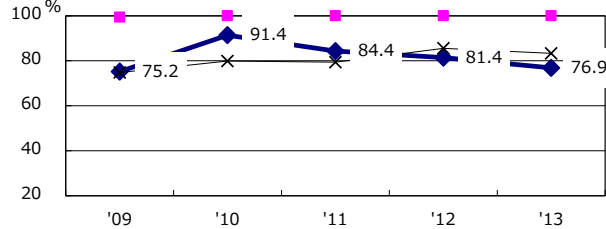
Proportion of Bacteriologically +ve. PTB



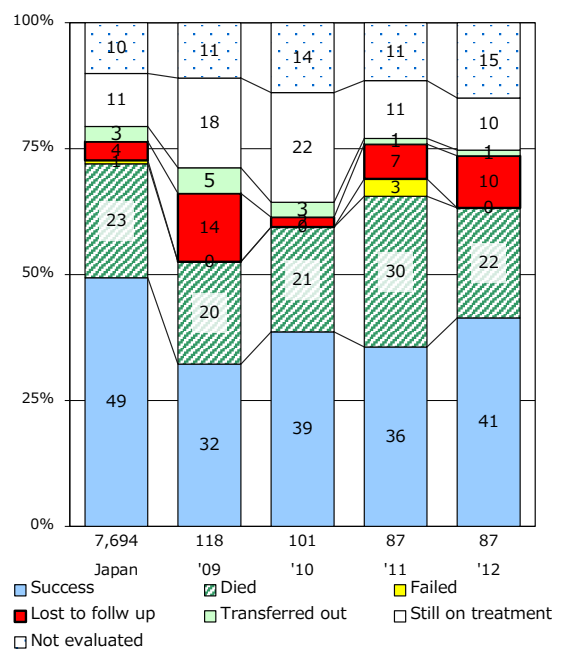
Median duration of treatment of all forms and hospitalization among PTB



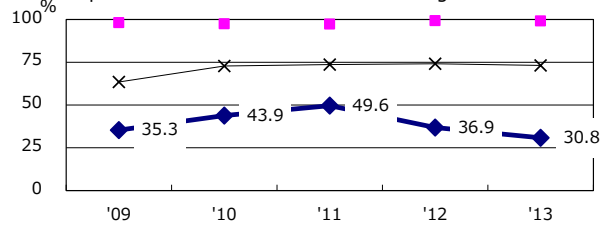
Proportion of culture results obtained among PTB



Treatment outcomes of new sputum smear +ve.TB



Proportion of DST results obtained among culture +ve. PTB



PTB : pumonyary TB

† Excluding unknown delay(%)	'09	'10	'11	'12	'13
	26.7	33.1	21.2	19.1	38.2

‡ Excluding unknown Tx(%)	'09	'10	'11	'12	'13
	1.5	1.8	2.9	3.3	1.6