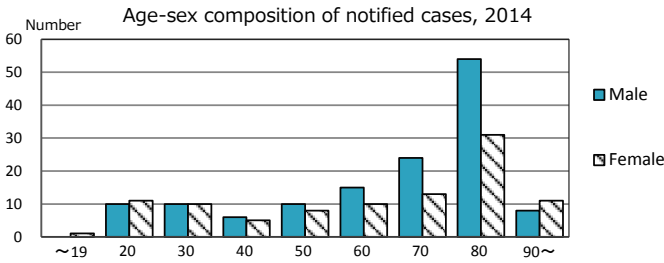
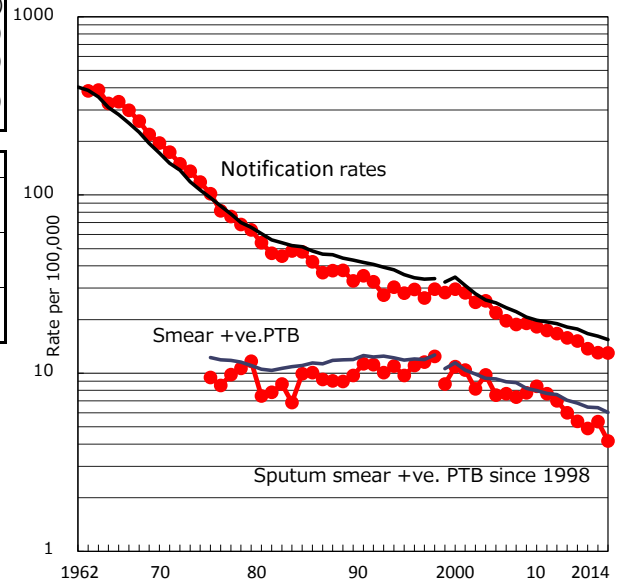


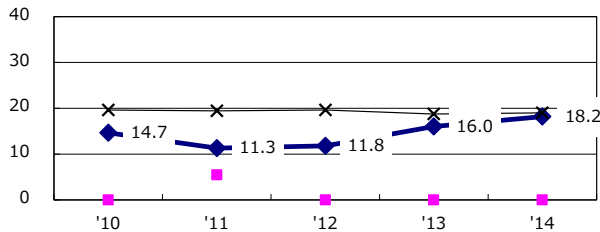
TB statistics in 2014 ( Population in Mie 1,825,377 )	
Among newly registered : (Japan)	
Foreign borns	35 14.8% (5.6%)
TB cases with homeless history	1 0.4% (1.1%)
Male aged 35-59,without job and receiveing public assistance	0 0.0% (8.0%)

Trends	'10	'11	'12	'13	'14
Notified cases	293	280	252	239	237
Rate per 100,000 population	15.8	15.2	13.7	13.0	13.0
Sputum smear +ve. pul.cases	111	99	90	98	76
Rate per 100,000 population	6.0	5.4	4.9	5.3	4.2
Latent Tuberculosis Infection	33	90	72	66	122
Rate per 100,000 population	1.8	4.9	3.9	3.6	6.7

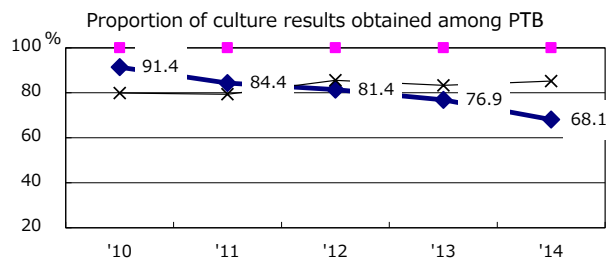
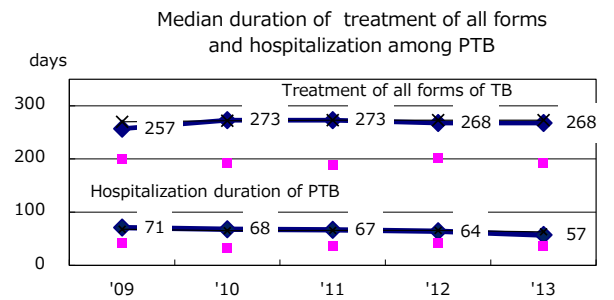
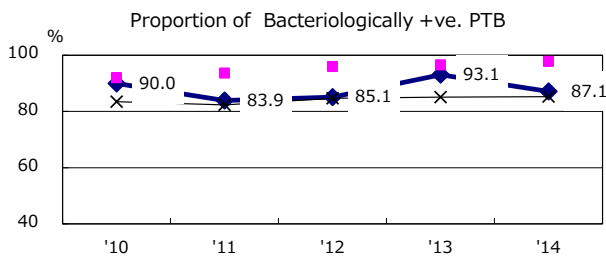
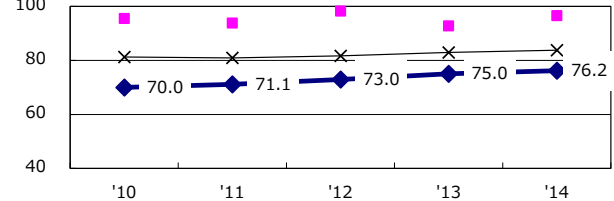
Trends of TB notification rates, all forms and smear +ve.PTB



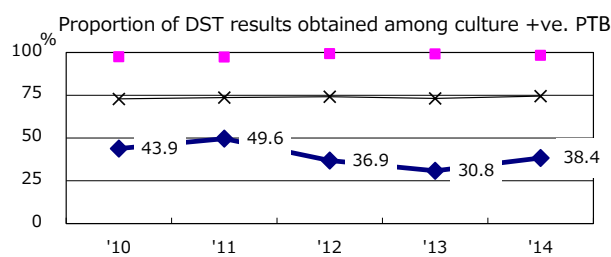
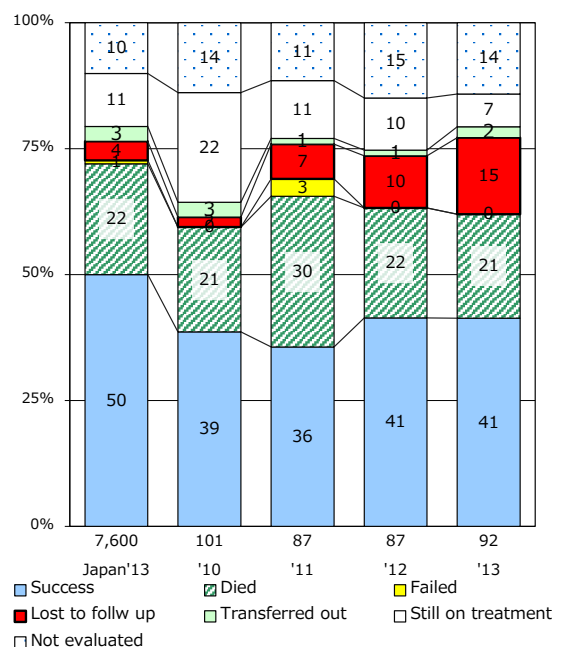
Proportion of cases with total diagnosis delay(> 3 mths ) among symptomatic PTB\*



Proportion of TX with HRZ-E/S among all forms of TB cases aged under 80 yrs †



Treatment outcomes of new sputum smear +ve.TB



PTB : pumonary TB

† Excluding unknown delay(%)	'10	'11	'12	'13	'14
	33.1	21.2	19.1	38.2	53.0

‡ Excluding unknown Tx(%)	'10	'11	'12	'13	'14
	1.8	2.9	3.3	1.6	5.3