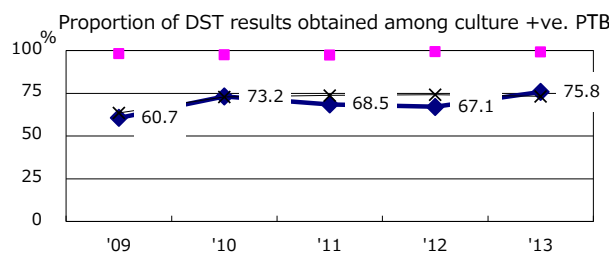
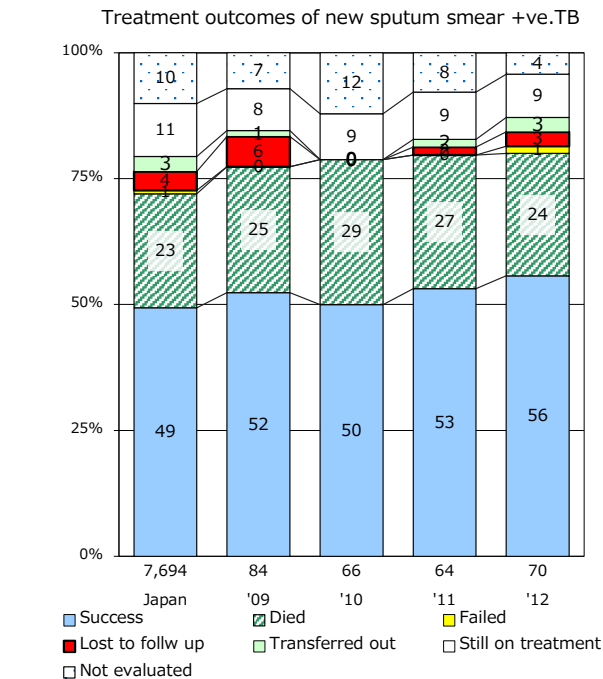
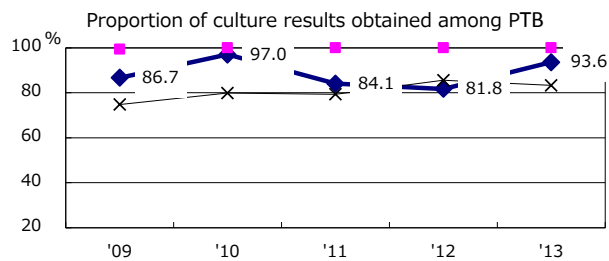
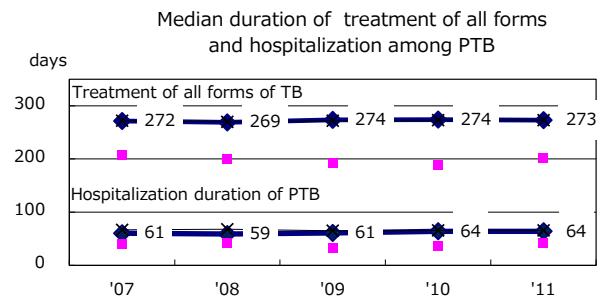
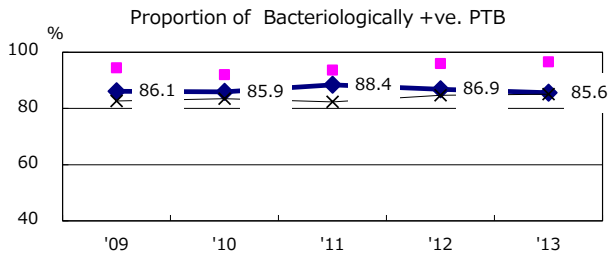
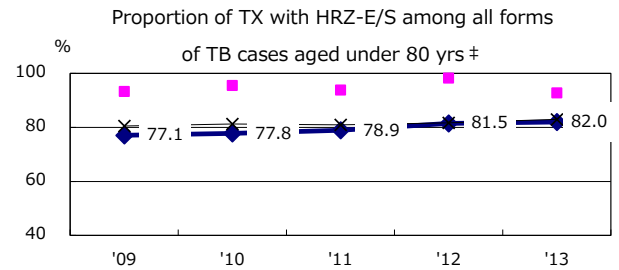
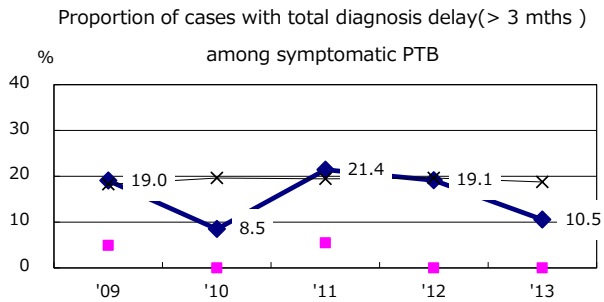
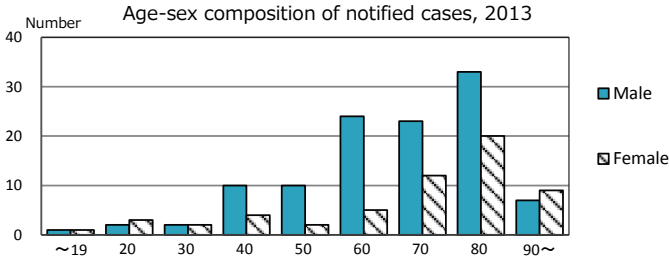
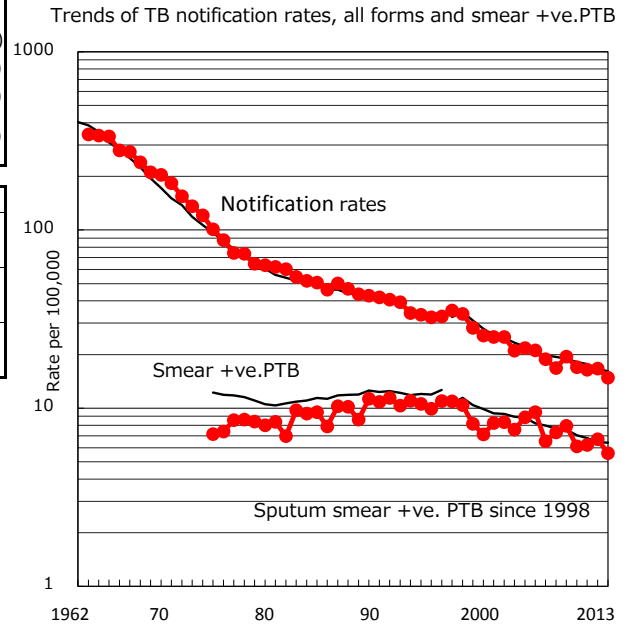


| | |
|--|----------------|
| TB statistics in 2013 (Population in Kyoto 1,146,605) | |
| Among newly registered : (Japan) | |
| Foreign borns | 6 3.5% (5.0%) |
| TB cases with homeless history | 0 0.0% (1.6%) |
| Male aged 35-59, without job and receiving public assistance | 1 4.5% (10.8%) |

| Trends | '09 | '10 | '11 | '12 | '13 |
|-------------------------------|------|------|------|------|------|
| Notified cases | 225 | 197 | 190 | 192 | 170 |
| Rate per 100,000 population | 19.5 | 17.0 | 16.4 | 16.7 | 14.8 |
| Sputum smear +ve. pul.cases | 92 | 71 | 72 | 77 | 64 |
| Rate per 100,000 population | 8.0 | 6.1 | 6.2 | 6.7 | 5.6 |
| Latent Tuberculosis Infection | 40 | 28 | 62 | 103 | 70 |
| Rate per 100,000 population | 3.5 | 2.4 | 5.4 | 8.9 | 6.1 |



PTB : pumonyary TB

| † Excluding unknown delay(%) | '09 | '10 | '11 | '12 | '13 |
|------------------------------|------|------|------|------|------|
| | 13.9 | 39.8 | 47.2 | 35.8 | 24.0 |

| ‡ Excluding unknown Tx(%) | '09 | '10 | '11 | '12 | '13 |
|---------------------------|-----|-----|-----|-----|-----|
| | 2.0 | 3.1 | 2.7 | 0.0 | 1.0 |