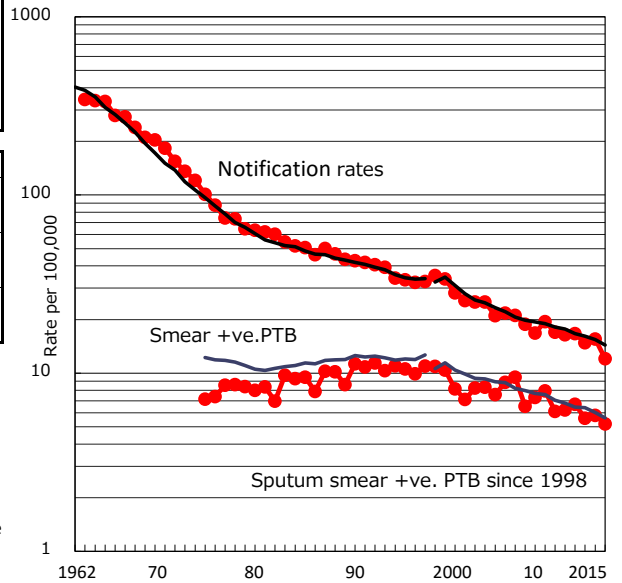


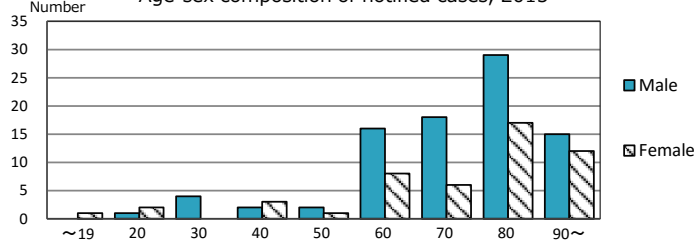
| | | |
|--------------------------------------------------------------|----------------------|-------------|
| TB statistics in 2015 | (Population in Kyoto | 1,135,570) |
| Among newly notified : | (Japan) | |
| Foreign borns | 5 | 3.6% (6.4%) |
| TB cases with homeless history | 0 | 0.0% (0.9%) |
| Male aged 35-59, without job and receiving public assistance | 0 | 0.0% (9.0%) |

| Trends | '11 | '12 | '13 | '14 | '15 |
|-------------------------------|------|------|------|------|------|
| Notified cases | 190 | 192 | 170 | 177 | 137 |
| Rate per 100,000 population | 16.4 | 16.7 | 14.8 | 15.5 | 12.1 |
| Sputum smear +ve. PTB | 72 | 77 | 64 | 66 | 59 |
| Rate per 100,000 population | 6.2 | 6.7 | 5.6 | 5.8 | 5.2 |
| Latent Tuberculosis Infection | 62 | 103 | 70 | 54 | 74 |
| Rate per 100,000 population | 5.4 | 8.9 | 6.1 | 4.7 | 6.5 |

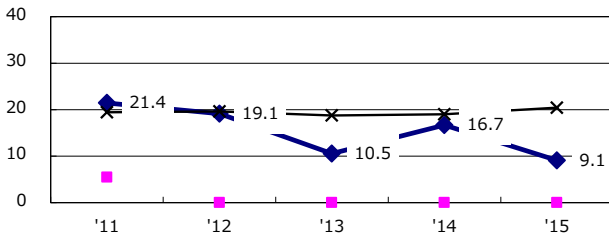
Trends of TB notification rates, all forms and smear +ve. PTB



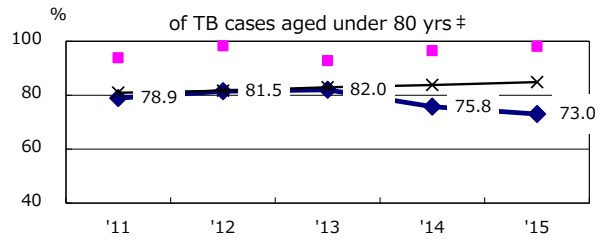
Age-sex composition of notified cases, 2015



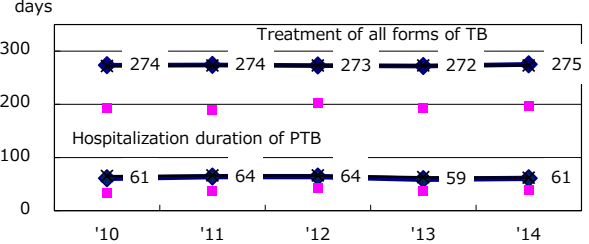
Proportion of cases with total diagnosis delay (> 3 mths) among symptomatic PTB*



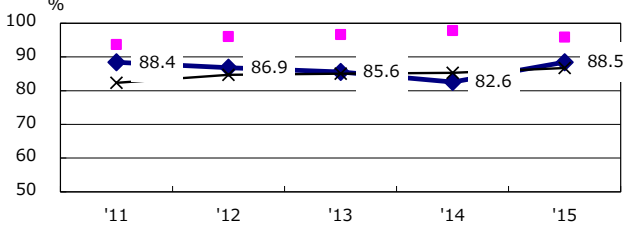
Proportion of TX with HRZ-E/S among all forms of TB cases aged under 80 yrs †



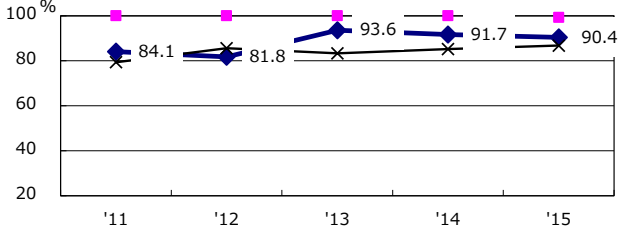
Median duration of treatment of all forms and hospitalization among PTB



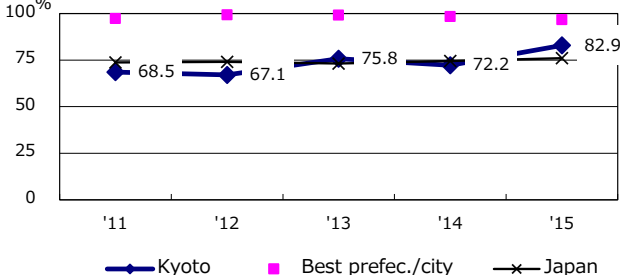
Proportion of Bacteriologically +ve. PTB



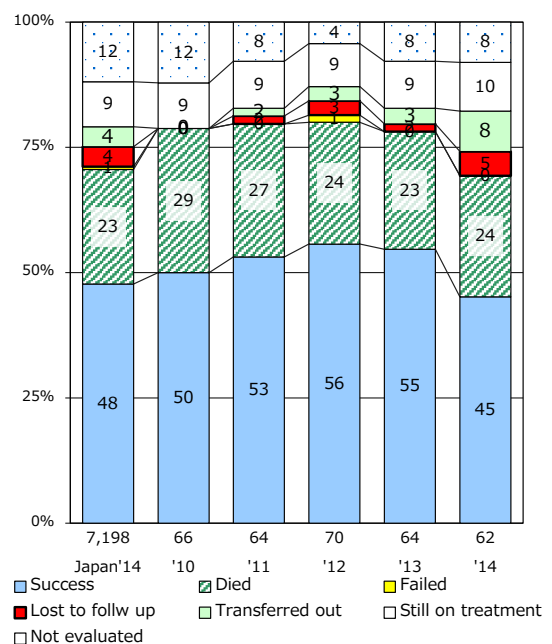
Proportion of culture results obtained among PTB



Proportion of DST results obtained among culture +ve. PTB



Treatment outcomes of new sputum smear +ve. TB



PTB : pulmonary TB

| | | | | | |
|------------------------------|------|------|------|------|------|
| † Excluding unknown delay(%) | '11 | '12 | '13 | '14 | '15 |
| | 47.2 | 35.8 | 24.0 | 44.9 | 33.7 |

| | | | | | |
|---------------------------|-----|-----|-----|-----|-----|
| ‡ Excluding unknown Tx(%) | '11 | '12 | '13 | '14 | '15 |
| | 2.7 | 0.0 | 1.0 | 2.1 | 1.6 |