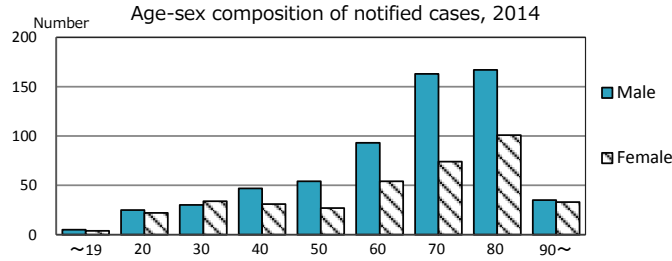
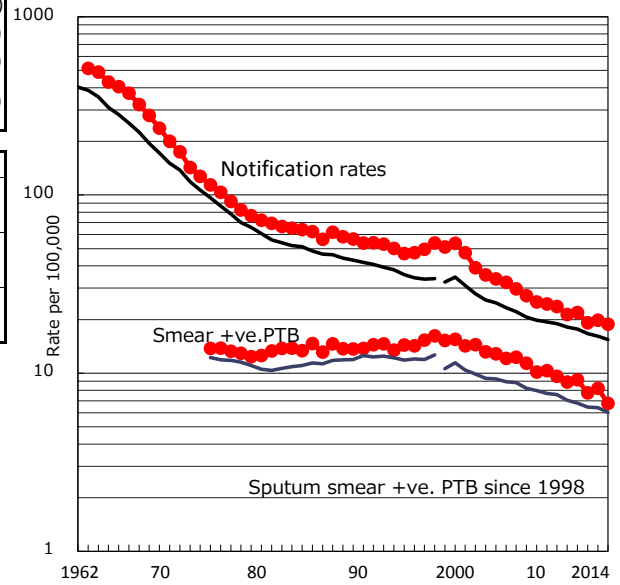


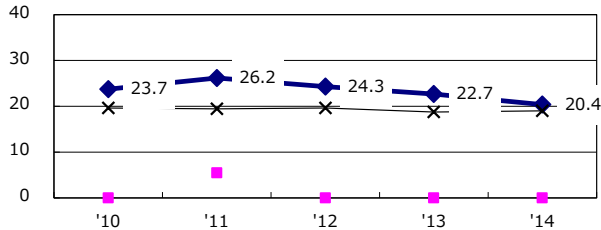
TB statistics in 2014 (Population in Osaka 5,309,263)	
Among newly registered : (Japan)	
Foreign borns	19 1.9% (5.6%)
TB cases with homeless history	1 0.1% (1.1%)
Male aged 35-59,without job and receiveing public assistance	6 4.6% (8.0%)

Trends	'10	'11	'12	'13	'14
Notified cases	1,143	1,170	1,023	1,056	999
Rate per 100,000 population	21.3	21.9	19.2	19.8	18.8
Sputum smear +ve. pul.cases	477	491	413	438	359
Rate per 100,000 population	8.9	9.2	7.7	8.2	6.8
Latent Tuberculosis Infection	180	394	373	373	288
Rate per 100,000 population	3.4	7.4	7.0	7.0	5.4

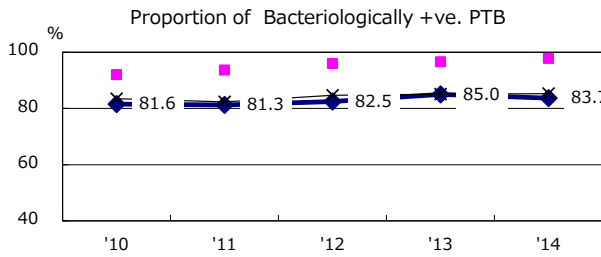
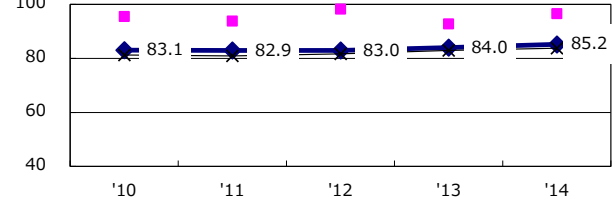
Trends of TB notification rates, all forms and smear +ve.PTB



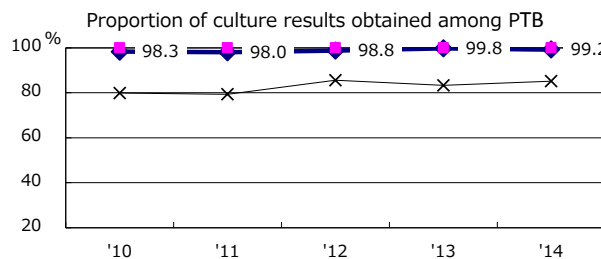
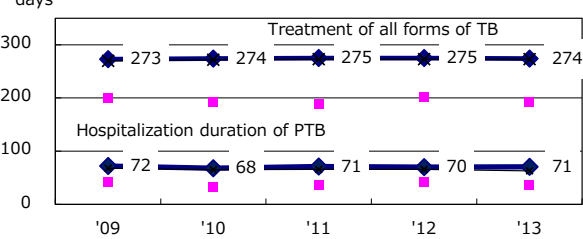
Proportion of cases with total diagnosis delay(> 3 mths) among symptomatic PTB*



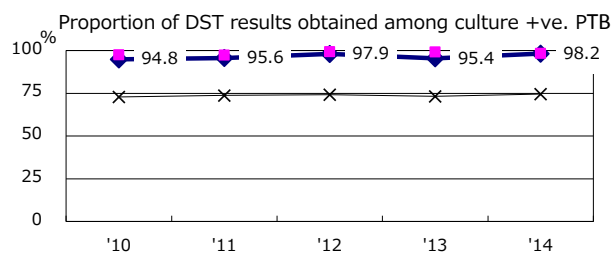
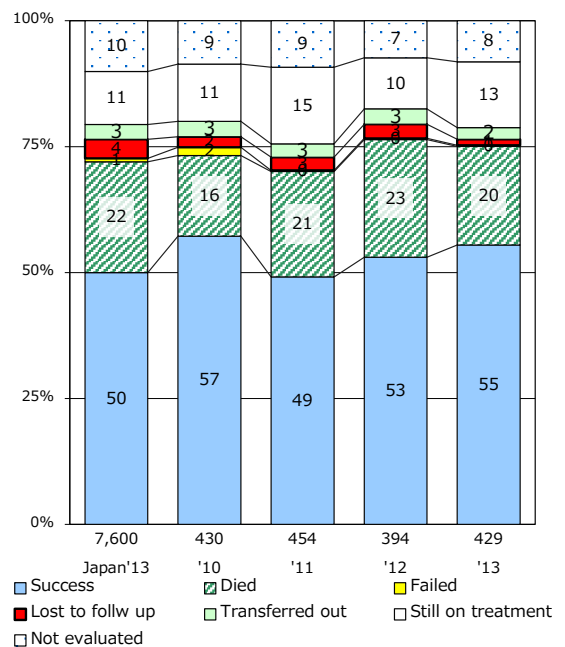
Proportion of TX with HRZ-E/S among all forms of TB cases aged under 80 yrs †



Median duration of treatment of all forms and hospitalization among PTB



Treatment outcomes of new sputum smear +ve.TB



PTB : pumonyary TB

† Excluding unknown delay(%)	'10	'11	'12	'13	'14
	26.2	17.1	26.6	6.9	16.2

‡ Excluding unknown Tx(%)	'10	'11	'12	'13	'14
	1.2	0.9	1.1	0.8	1.1