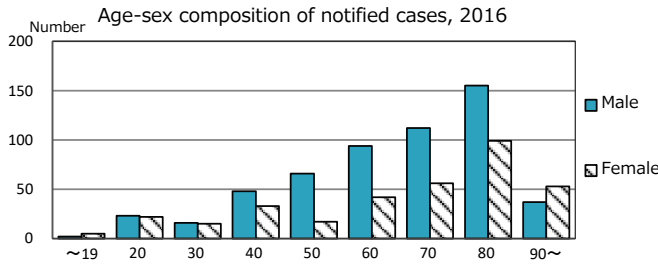
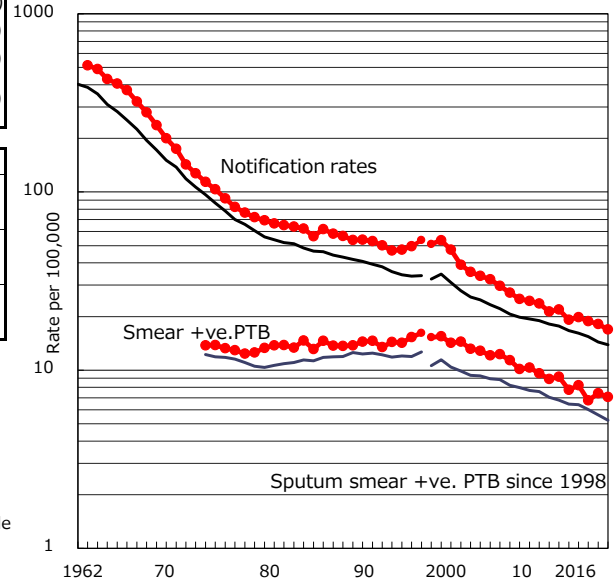


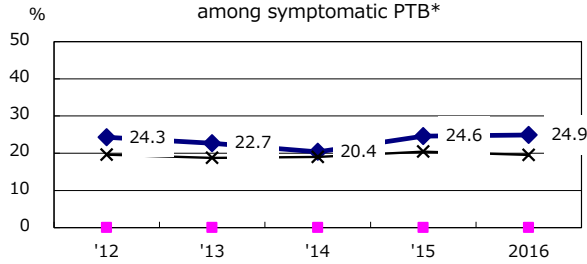
TB statistics in 2016 (Population in Osaka		5,292,876)
Among newly notified : (Japan)		
Foreign borns	33	3.7% (7.6%)
TB cases with homeless history	2	0.2% (1.0%)
Male aged 35-59, without job and receiving public assistance	4	3.1% (7.7%)

Trends	'12	'13	'14	'15	2016
Notified cases	1,023	1,056	999	964	895
Rate per 100,000 population	19.2	19.8	18.8	18.2	16.9
Sputum smear +ve. PTB	413	438	359	393	374
Rate per 100,000 population	7.7	8.2	6.8	7.4	7.1
Latent Tuberculosis Infection	373	373	288	320	416
Rate per 100,000 population	7.0	7.0	5.4	6.0	7.9

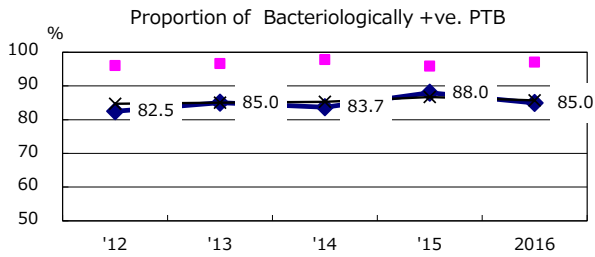
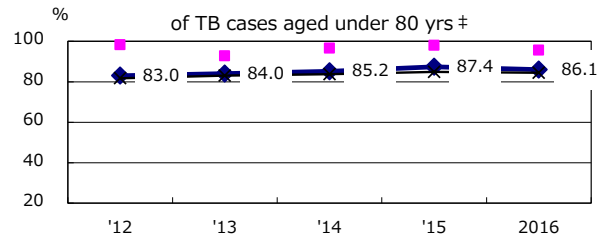
Trends of TB notification rates, all forms and smear +ve.PTB



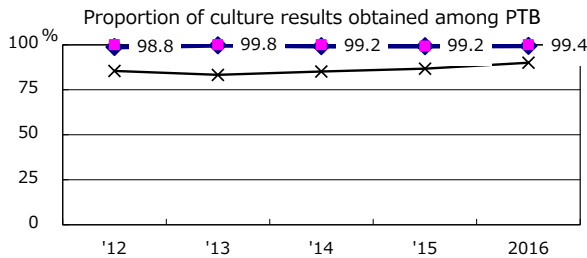
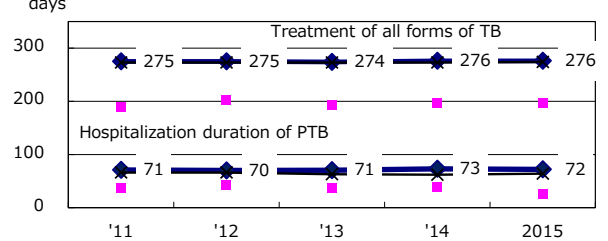
Proportion of cases with total diagnosis delay (> 3 mths) among symptomatic PTB*



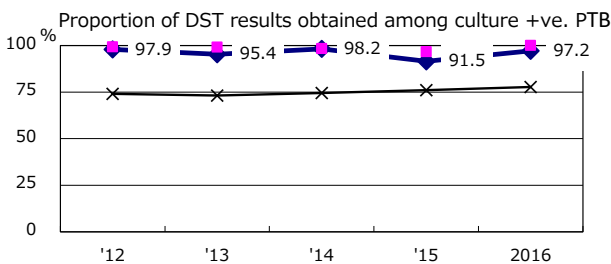
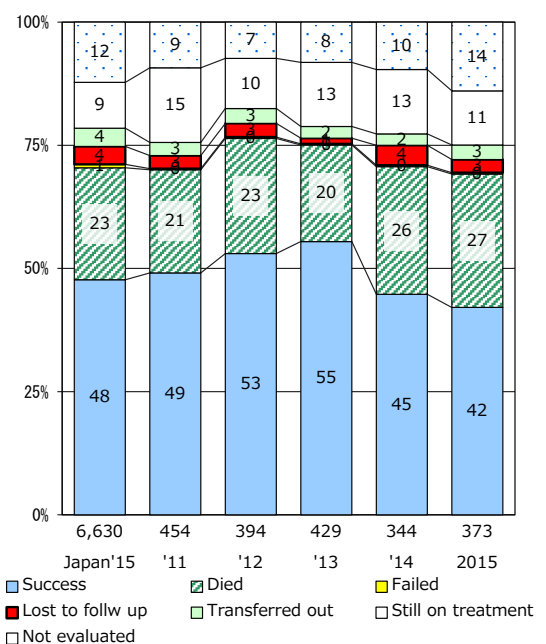
Proportion of TX with HRZ-E/S among all forms of TB cases aged under 80 yrs †



Median duration of treatment of all forms and hospitalization among PTB



Treatment outcomes of new sputum smear +ve.TB



PTB : pulmonary TB

† Excluding unknown delay(%)	'12	'13	'14	'15	2016
	26.6	6.9	16.2	4.9	3.8

‡ Excluding unknown Tx(%)	'12	'13	'14	'15	2016
	1.1	0.8	1.1	1.9	1.1