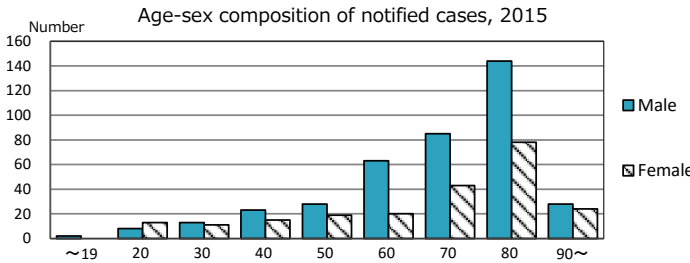
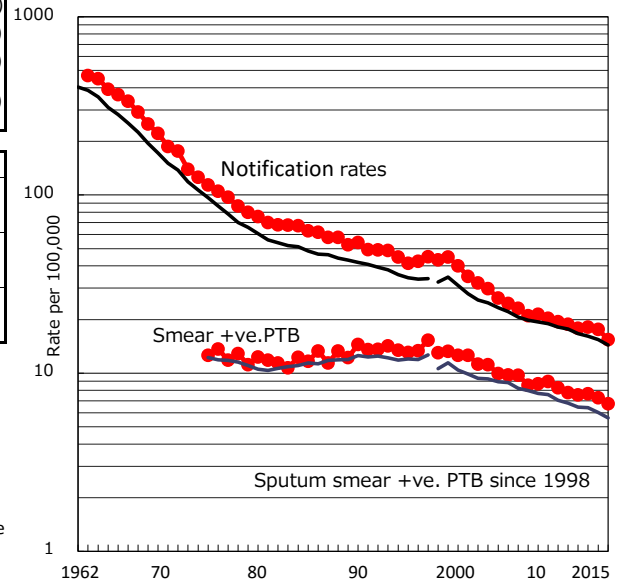


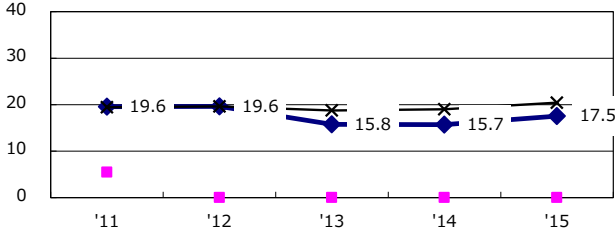
TB statistics in 2015 Among newly notified : Foreign borns TB cases with homeless history Male aged 35-59, without job and receiving public assistance	(Population in Hyogo (Japan) 13 2.1% (6.4%) 2 0.3% (0.9%) 4 6.3% (9.0%)	3,999,129)
---	---	-------------

Trends	'11	'12	'13	'14	'15
Notified cases	760	720	729	706	617
Rate per 100,000 population	18.8	17.9	18.1	17.6	15.4
Sputum smear +ve. PTB	314	304	308	291	270
Rate per 100,000 population	7.8	7.5	7.7	7.3	6.8
Latent Tuberculosis Infection	299	270	197	149	158
Rate per 100,000 population	7.4	6.7	4.9	3.7	4.0

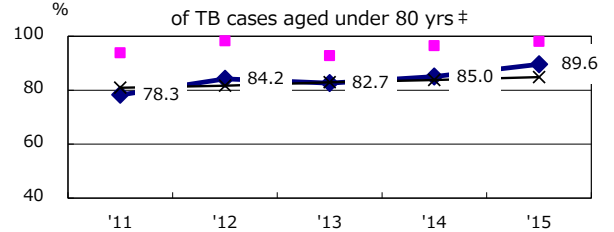
Trends of TB notification rates, all forms and smear +ve. PTB



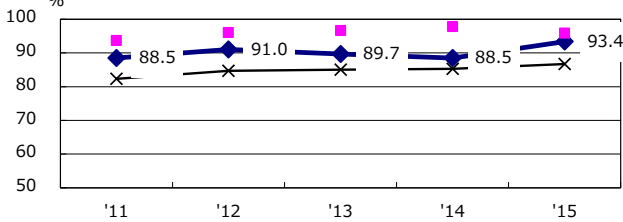
Proportion of cases with total diagnosis delay (> 3 mths) among symptomatic PTB*



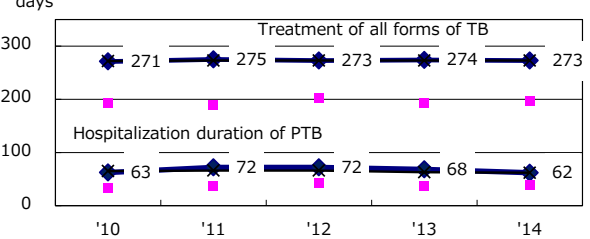
Proportion of TX with HRZ-E/S among all forms of TB cases aged under 80 yrs †



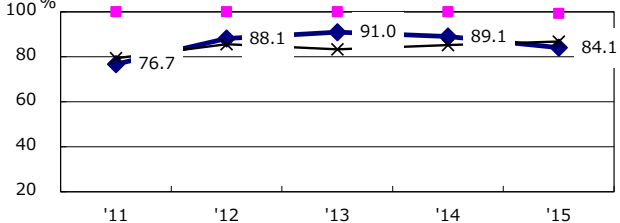
Proportion of Bacteriologically +ve. PTB



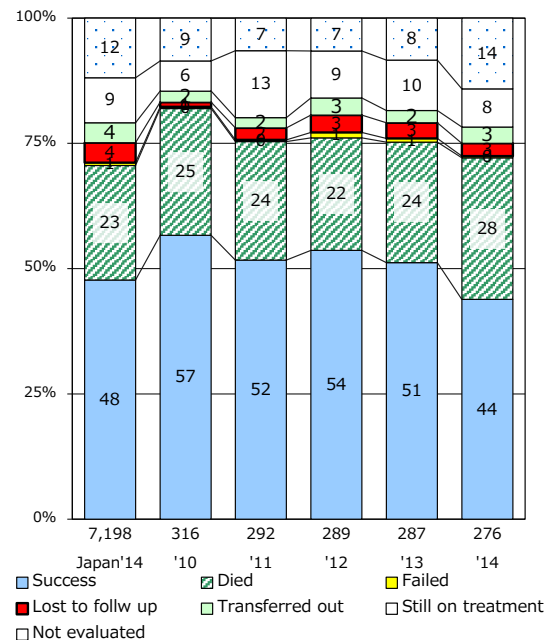
Median duration of treatment of all forms and hospitalization among PTB



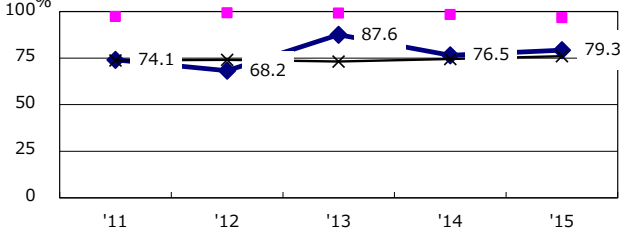
Proportion of culture results obtained among PTB



Treatment outcomes of new sputum smear +ve. TB



Proportion of DST results obtained among culture +ve. PTB



PTB : pulmonary TB

† Excluding unknown delay(%)	'11	'12	'13	'14	'15
	51.7	46.8	9.2	18.3	23.0

‡ Excluding unknown Tx(%)	'11	'12	'13	'14	'15
	3.8	1.8	0.6	1.4	1.7