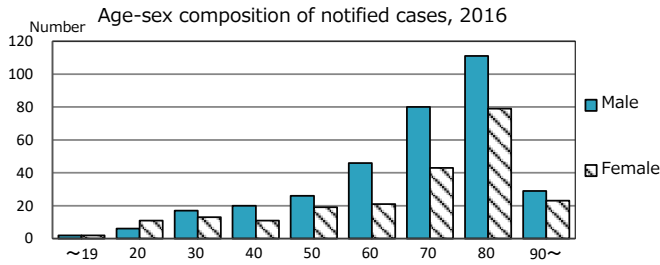
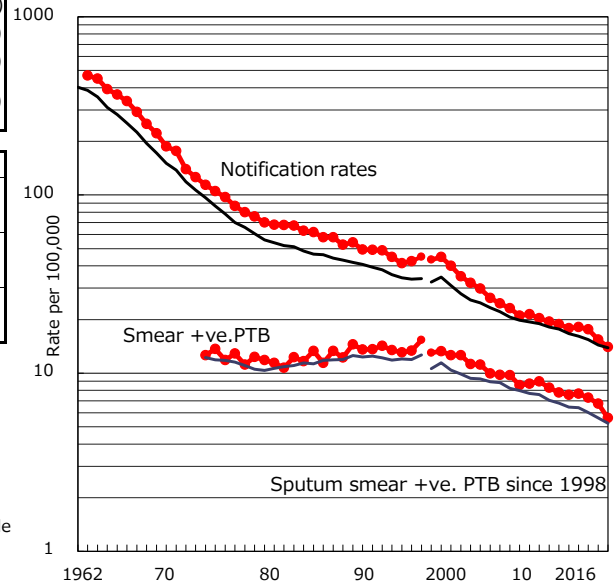


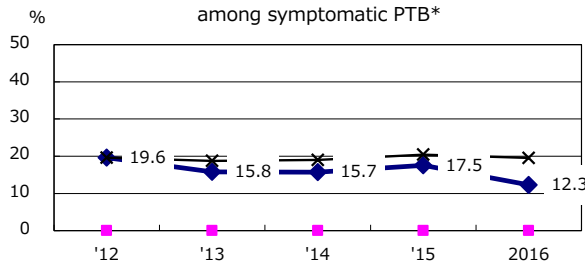
TB statistics in 2016 (Population in Hyogo		3,984,198)
Among newly notified : (Japan)		
Foreign borns	16	2.9% (7.6%)
TB cases with homeless history	2	0.4% (1.0%)
Male aged 35-59, without job and receiving public assistance	3	4.8% (7.7%)

Trends	'12	'13	'14	'15	2016
Notified cases	720	729	706	617	559
Rate per 100,000 population	17.9	18.1	17.6	15.4	14.0
Sputum smear +ve. PTB	304	308	291	270	223
Rate per 100,000 population	7.5	7.7	7.3	6.8	5.6
Latent Tuberculosis Infection	270	197	149	158	167
Rate per 100,000 population	6.7	4.9	3.7	4.0	4.2

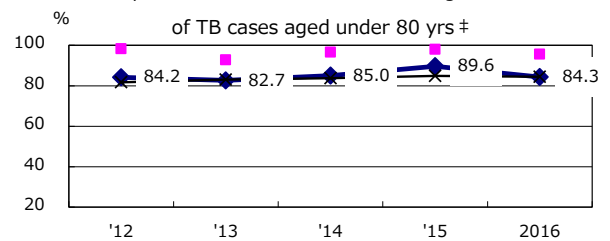
Trends of TB notification rates, all forms and smear +ve.PTB



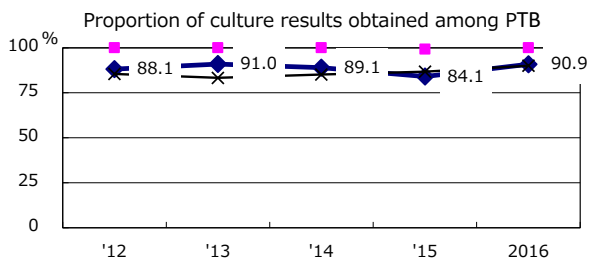
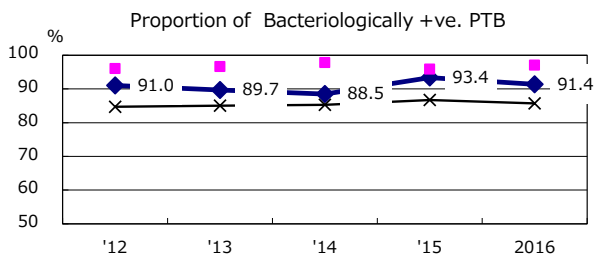
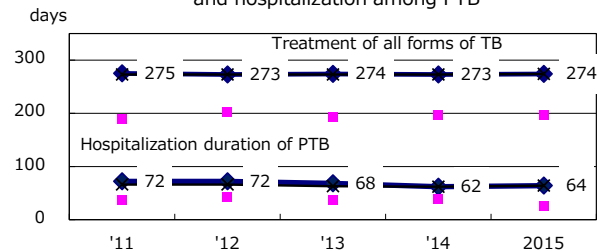
Proportion of cases with total diagnosis delay(> 3 mths) among symptomatic PTB*



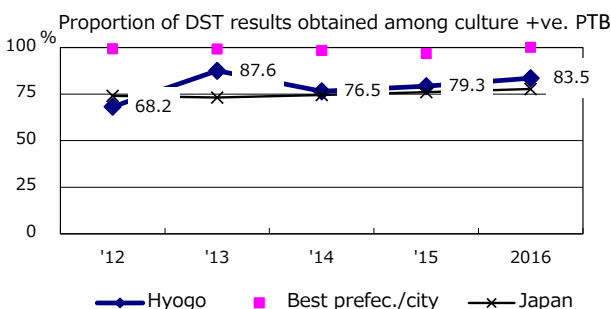
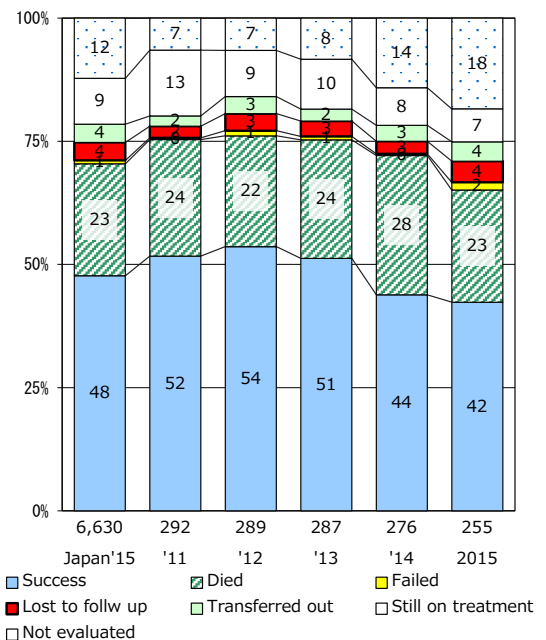
Proportion of TX with HRZ-E/S among all forms of TB cases aged under 80 yrs †



Median duration of treatment of all forms and hospitalization among PTB



Treatment outcomes of new sputum smear +ve.TB



PTB : pulmonary TB

† Excluding unknown delay(%)	'12	'13	'14	'15	2016
	46.8	9.2	18.3	23.0	21.0

‡ Excluding unknown Tx(%)	'12	'13	'14	'15	2016
	1.8	0.6	1.4	1.7	1.6