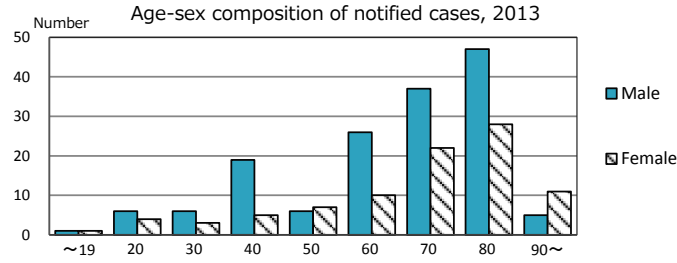
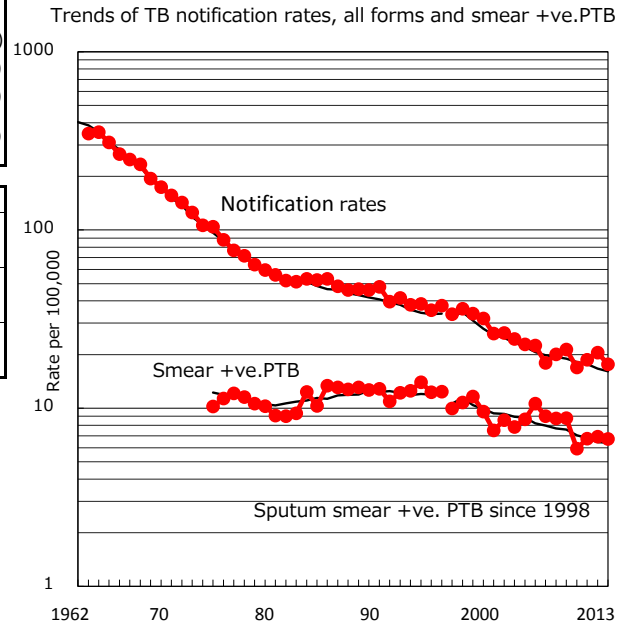
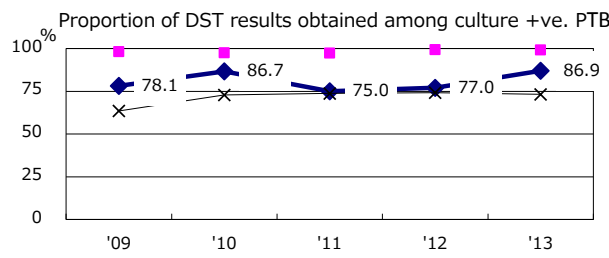
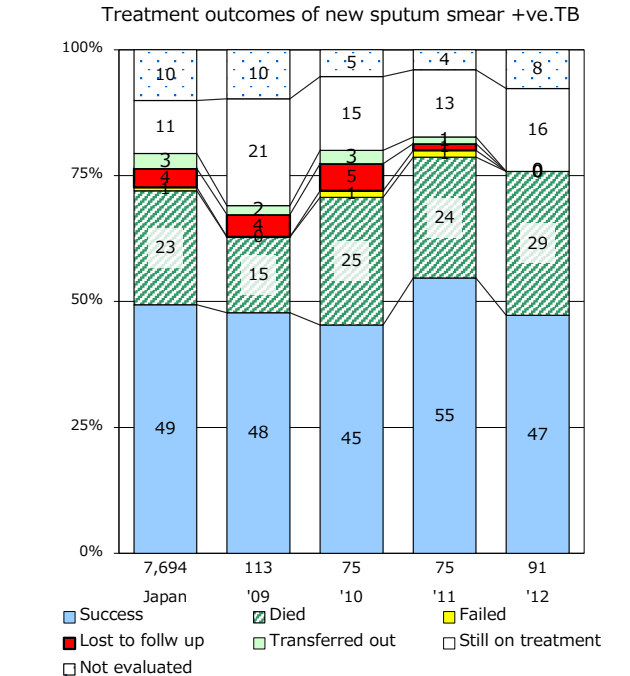
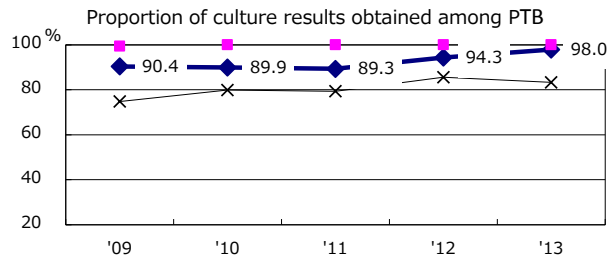
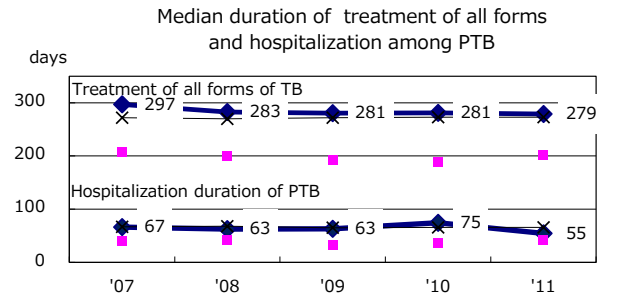
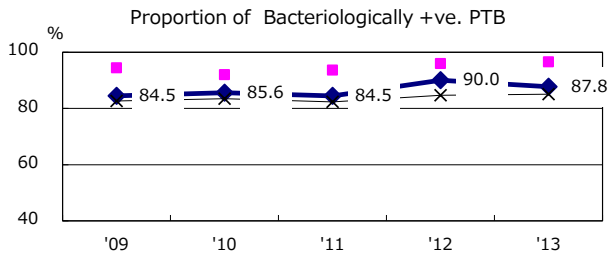
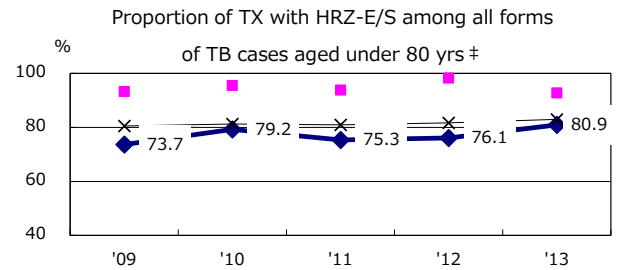
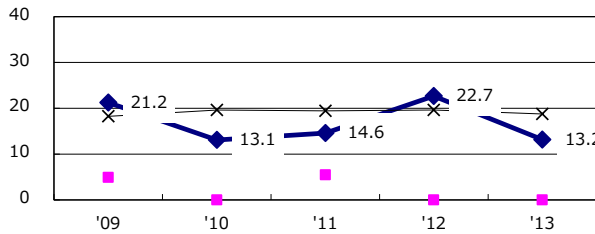


TB statistics in 2013 ( Population in Nara		1,383,317 )
Among newly registered :		(Japan)
Foreign borns	6	2.5% (5.0%)
TB cases with homeless history	1	0.4% (1.6%)
Male aged 35-59,without job and receiveing public assistance	1	3.2% (10.8%)

Trends	'09	'10	'11	'12	'13
Notified cases	298	237	261	285	244
Rate per 100,000 population	21.3	16.9	18.7	20.5	17.6
Sputum smear +ve. pul.cases	123	83	94	96	93
Rate per 100,000 population	8.8	5.9	6.7	6.9	6.7
Latent Tuberculosis Infection	57	42	93	121	86
Rate per 100,000 population	4.1	3.0	6.7	8.7	6.2



Proportion of cases with total diagnosis delay(> 3 mths ) among symptomatic PTB



PTB : pumonary TB

† Excluding unknown delay(%)	'09	'10	'11	'12	'13
	5.7	12.2	21.2	15.3	12.2

‡ Excluding unknown Tx(%)	'09	'10	'11	'12	'13
	1.4	2.5	3.7	3.1	0.7