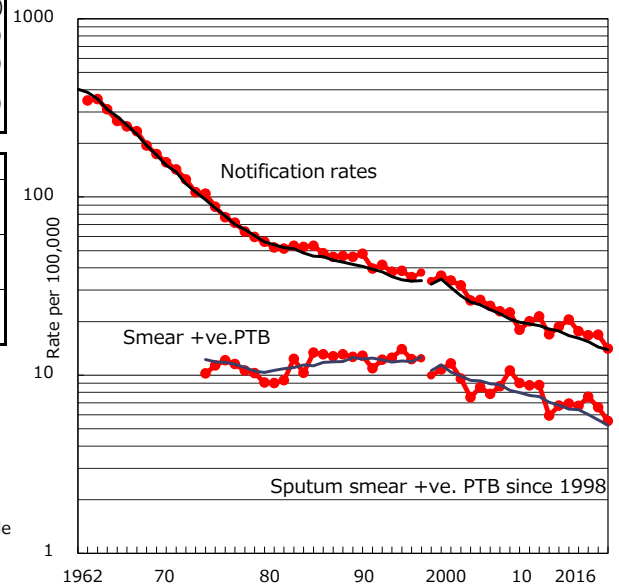


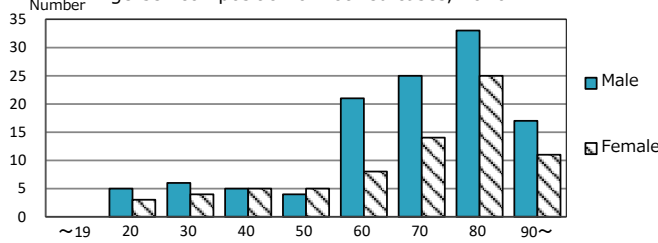
TB statistics in 2016 (Population in Nara		1,356,319)
Among newly notified :		(Japan)
Foreign borns	11	5.8% (7.6%)
TB cases with homeless history	1	0.5% (1.0%)
Male aged 35-59,without job and receiving public assistance	0	0.0% (7.7%)

Trends	'12	'13	'14	'15	2016
Notified cases	285	244	230	230	191
Rate per 100,000 population	20.5	17.6	16.7	16.8	14.1
Sputum smear +ve. PTB	96	93	104	90	75
Rate per 100,000 population	6.9	6.7	7.6	6.6	5.5
Latent Tuberculosis Infection	121	86	57	65	61
Rate per 100,000 population	8.7	6.2	4.1	4.8	4.5

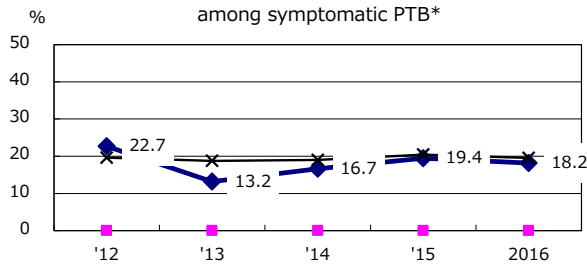
Trends of TB notification rates, all forms and smear +ve.PTB



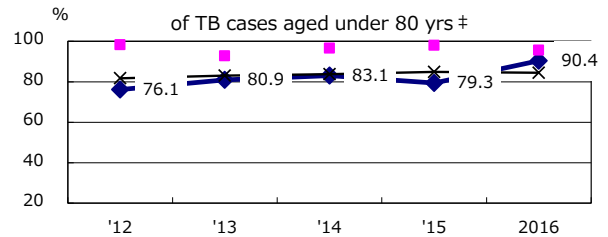
Age-sex composition of notified cases, 2016



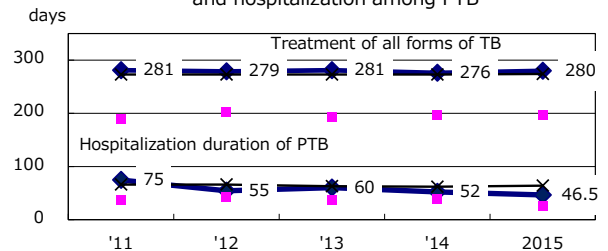
Proportion of cases with total diagnosis delay(> 3 mths) among symptomatic PTB*



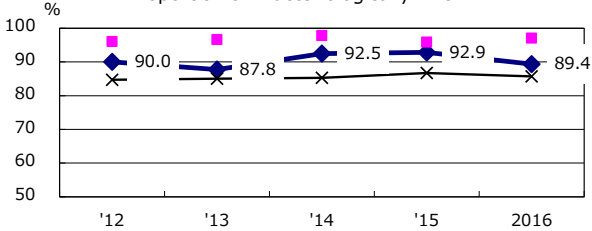
Proportion of TX with HRZ-E/S among all forms



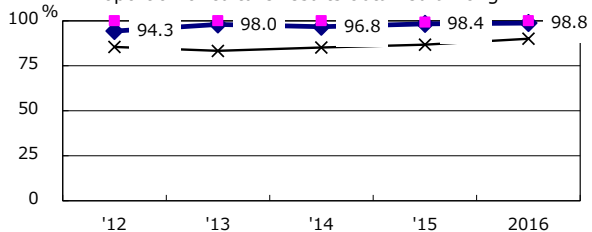
Median duration of treatment of all forms and hospitalization among PTB



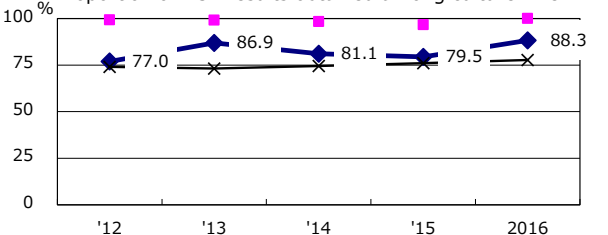
Proportion of Bacteriologically +ve. PTB



Proportion of culture results obtained among PTB

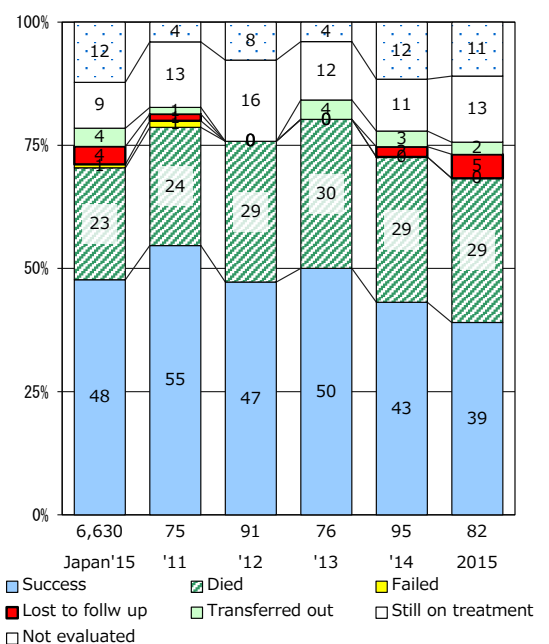


Proportion of DST results obtained among culture +ve. PTB



—◆— Nara ■ Best prefec./city —×— Japan

Treatment outcomes of new sputum smear +ve.TB



† Excluding unknown Tx(%) '12 '13 '14 '15 2016
 ‡ Excluding unknown Tx(%) 3.1 0.7 2.2 2.4 1.0

PTB : pulmonary TB

† Excluding unknown delay(%) '12 '13 '14 '15 2016
 15.3 12.2 24.5 20.6 20.2