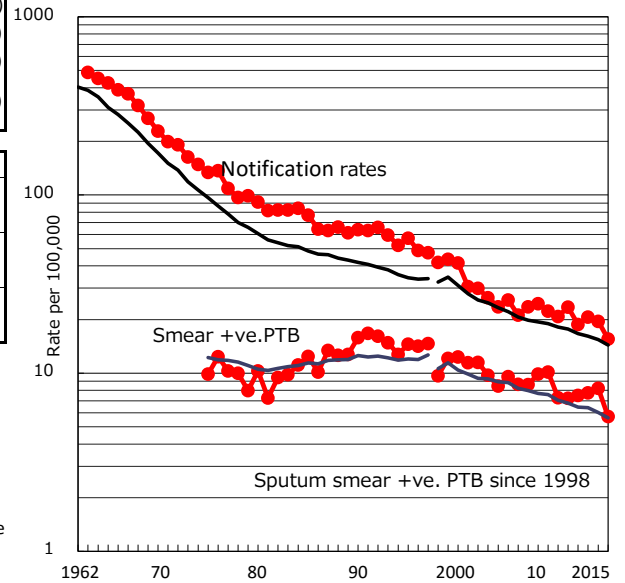


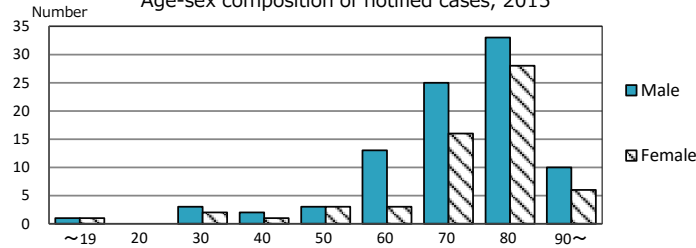
TB statistics in 2015 (Population in Wakayama 963,850)	
Among newly notified :	(Japan)
Foreign borns	3 2.0% (6.4%)
TB cases with homeless history	0 0.0% (0.9%)
Male aged 35-59, without job and receiving public assistance	0 0.0% (9.0%)

Trends	'11	'12	'13	'14	'15
Notified cases	234	185	202	190	150
Rate per 100,000 population	23.5	18.7	20.6	19.6	15.6
Sputum smear +ve. PTB	72	74	76	80	55
Rate per 100,000 population	7.2	7.5	7.8	8.2	5.7
Latent Tuberculosis Infection	216	140	71	31	31
Rate per 100,000 population	21.7	14.2	7.2	3.2	3.2

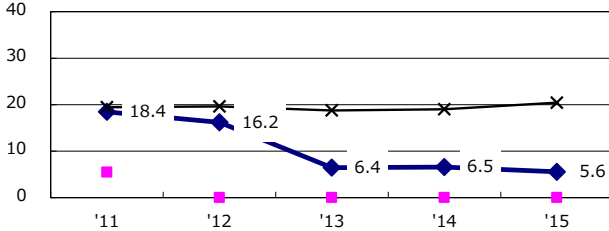
Trends of TB notification rates, all forms and smear +ve. PTB



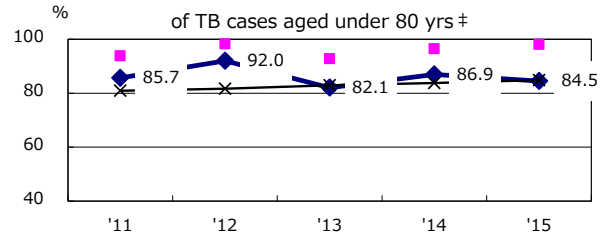
Age-sex composition of notified cases, 2015



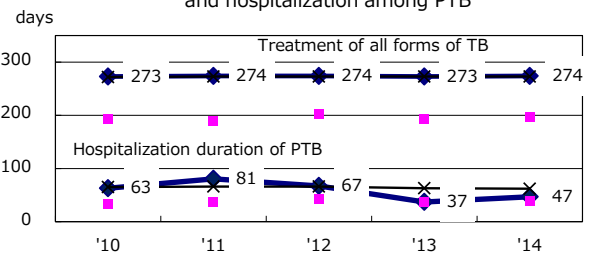
Proportion of cases with total diagnosis delay (> 3 mths) among symptomatic PTB*



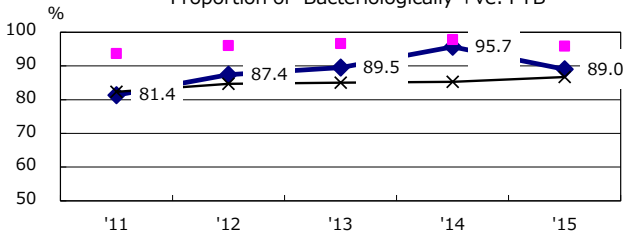
Proportion of TX with HRZ-E/S among all forms of TB cases aged under 80 yrs †



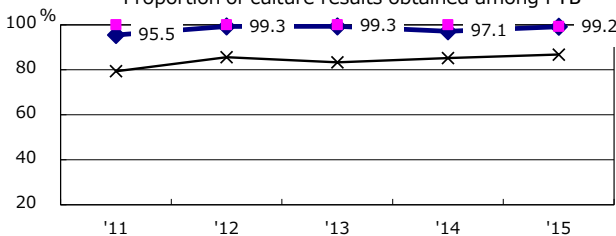
Median duration of treatment of all forms and hospitalization among PTB



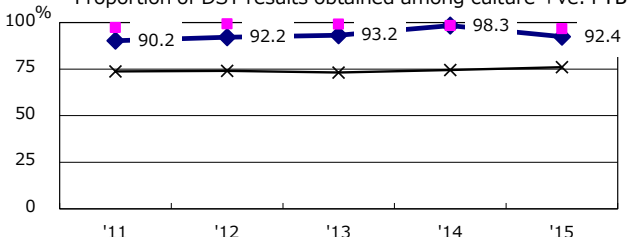
Proportion of Bacteriologically +ve. PTB



Proportion of culture results obtained among PTB



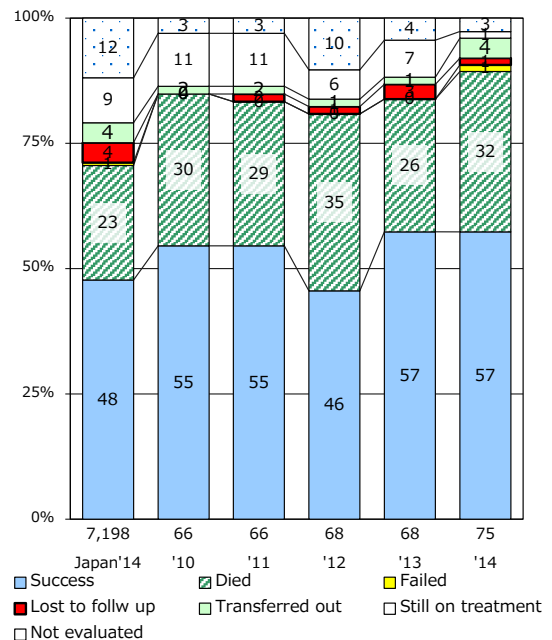
Proportion of DST results obtained among culture +ve. PTB



◆ Wakayama ■ Best prefec./city × Japan

PTB : pulmonary TB

Treatment outcomes of new sputum smear +ve. TB



† Excluding unknown Tx(%) ‡ Excluding unknown Tx(%)

	'11	'12	'13	'14	'15
† Excluding unknown delay(%)	0.0	11.8	12.8	4.5	4.3

	'11	'12	'13	'14	'15
‡ Excluding unknown Tx(%)	6.3	3.8	0.8	2.3	2.7