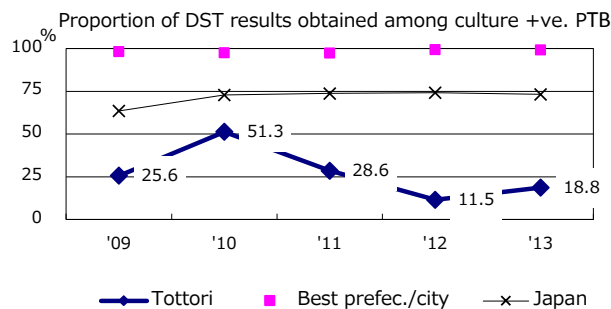
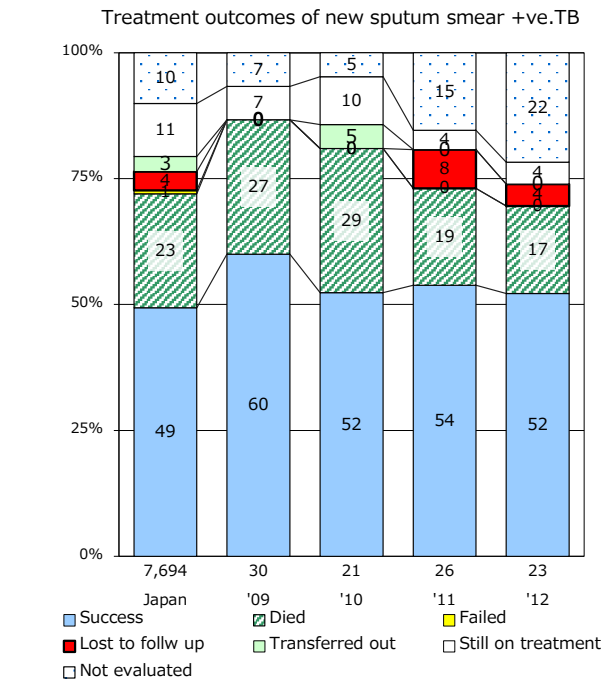
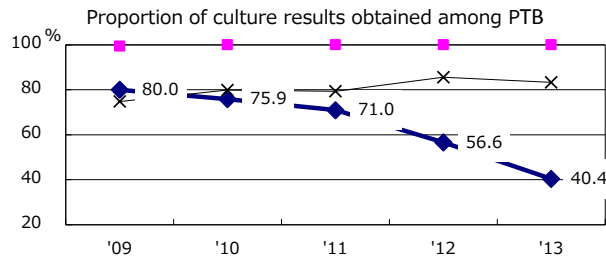
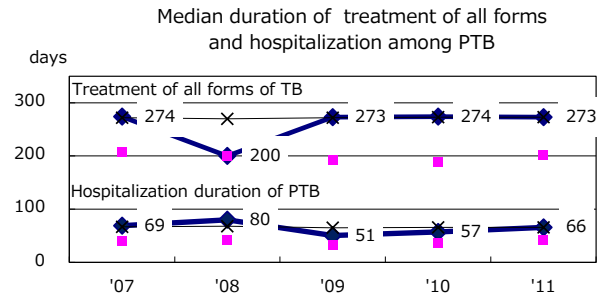
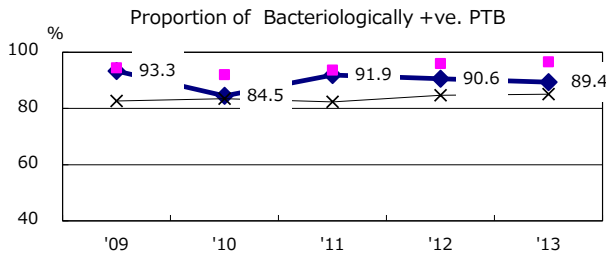
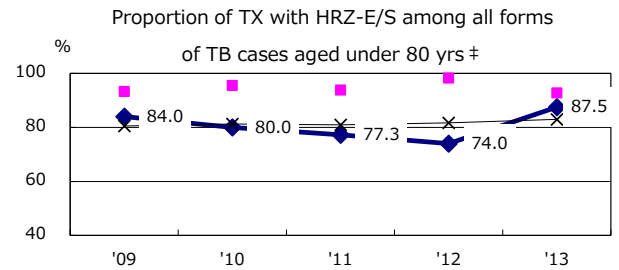
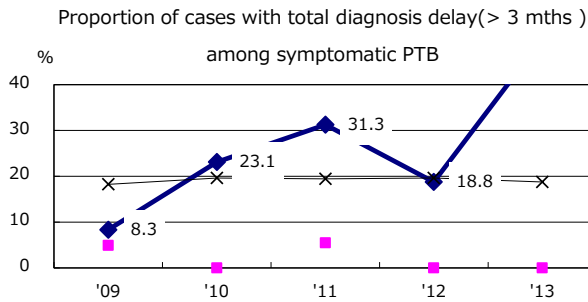
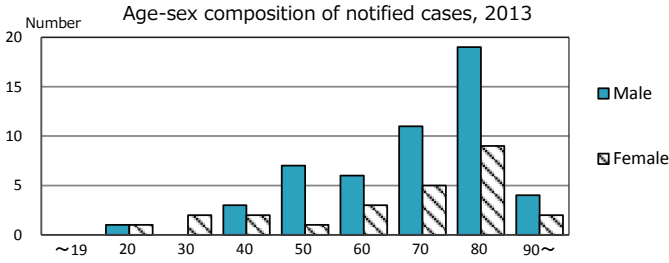
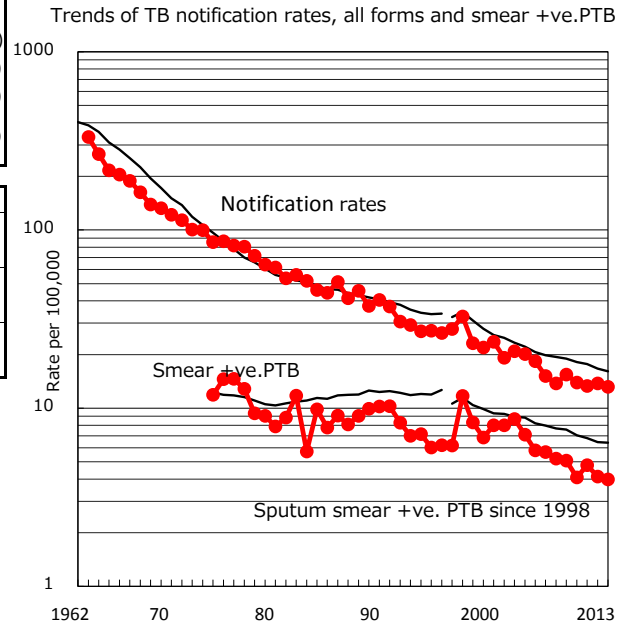


TB statistics in 2013 (Population in Tottori 577,647)	
Among newly registered : (Japan)	
Foreign borns	3 3.9% (5.0%)
TB cases with homeless history	0 0.0% (1.6%)
Male aged 35-59, without job and receiving public assistance	2 20.0% (10.8%)

Trends	'09	'10	'11	'12	'13
Notified cases	91	82	78	80	76
Rate per 100,000 population	15.4	13.9	13.3	13.8	13.2
Sputum smear +ve. pul.cases	30	24	28	24	23
Rate per 100,000 population	5.1	4.1	4.8	4.1	4.0
Latent Tuberculosis Infection	20	14	58	58	19
Rate per 100,000 population	3.4	2.4	9.9	10.0	3.3



PTB : pumonary TB

† Excluding unknown delay(%)	'09	'10	'11	'12	'13
	63.6	68.3	60.0	51.5	81.8

‡ Excluding unknown Tx(%)	'09	'10	'11	'12	'13
	2.0	1.8	4.3	0.0	4.8