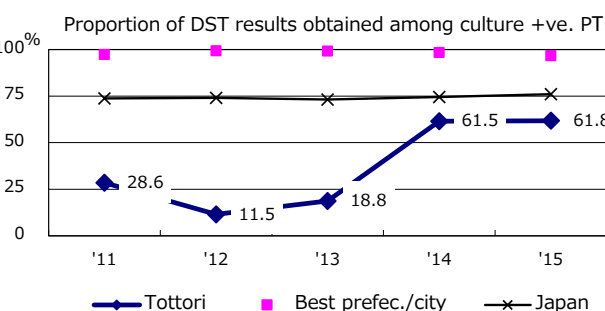
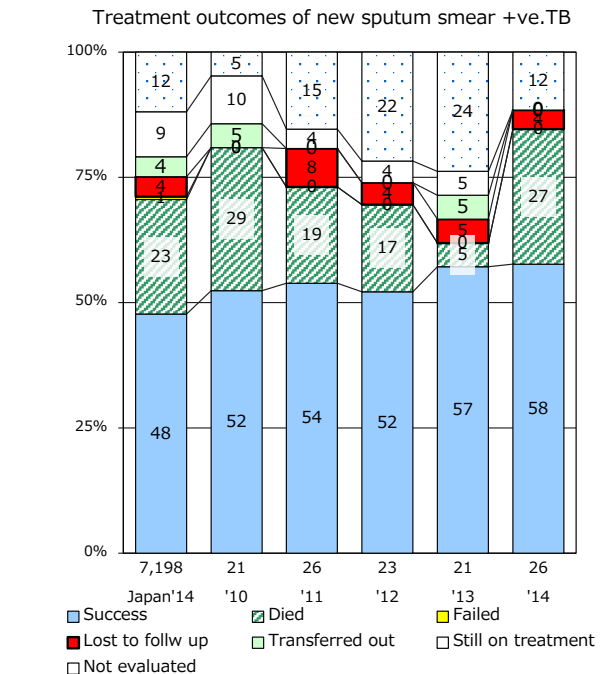
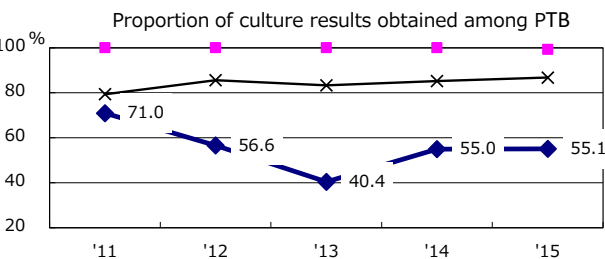
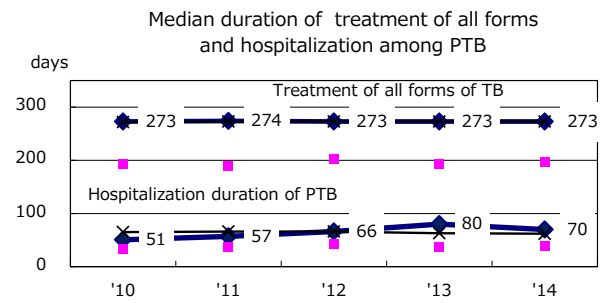
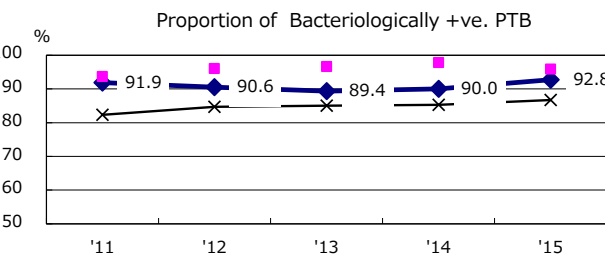
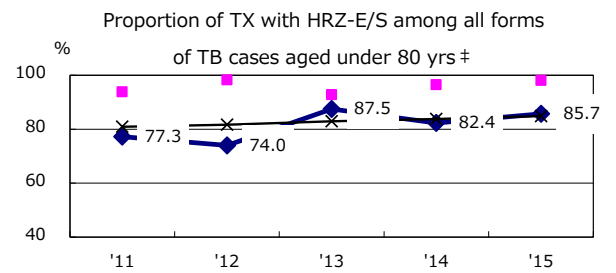
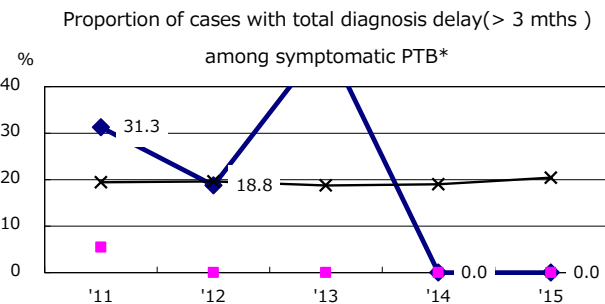
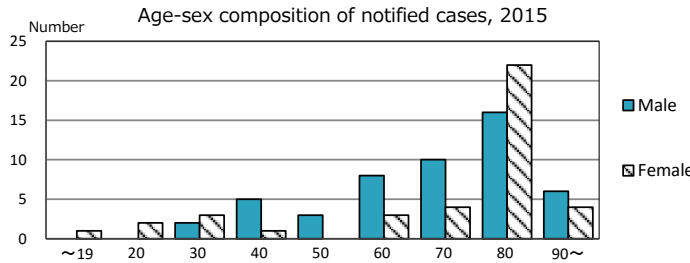
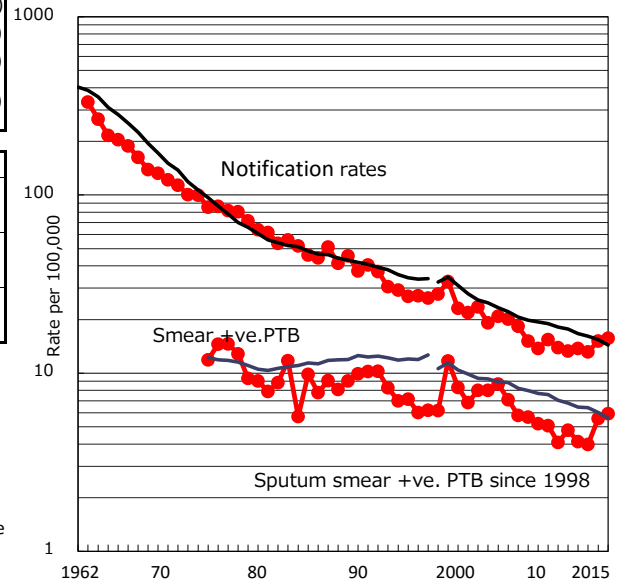


TB statistics in 2015	(Population in Tottori	573,648)
Among newly notified :		(Japan)
Foreign borns	2	2.2% (6.4%)
TB cases with homeless history	0	0.0% (0.9%)
Male aged 35-59, without job and receiving public assistance	0	0.0% (9.0%)

Trends	'11	'12	'13	'14	'15
Notified cases	78	80	76	87	90
Rate per 100,000 population	13.3	13.8	13.2	15.2	15.7
Sputum smear +ve. PTB	28	24	23	32	34
Rate per 100,000 population	4.8	4.1	4.0	5.6	5.9
Latent Tuberculosis Infection	58	58	19	19	20
Rate per 100,000 population	9.9	10.0	3.3	3.3	3.5

Trends of TB notification rates, all forms and smear +ve. PTB



PTB : pulmonary TB

† Excluding unknown delay(%)	'11	'12	'13	'14	'15
	60.0	51.5	81.8	97.6	97.7

‡ Excluding unknown Tx(%)	'11	'12	'13	'14	'15
	4.3	0.0	4.8	5.6	0.0