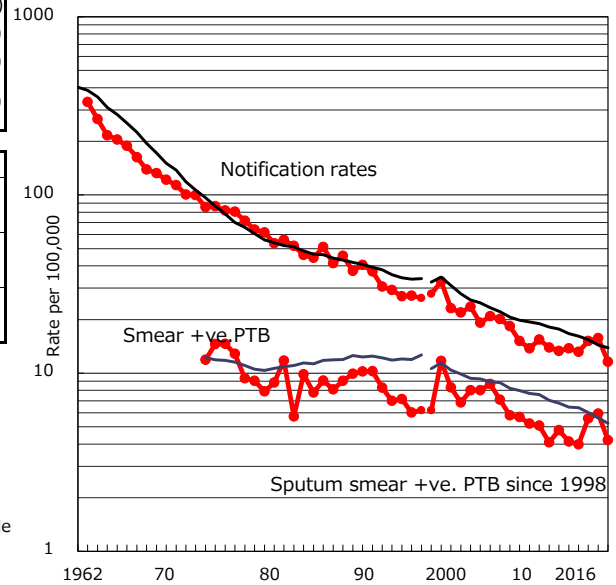


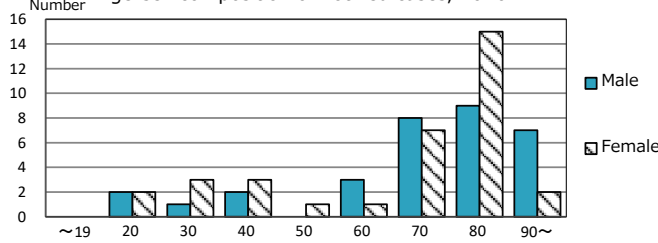
TB statistics in 2016 (Population in Tottori 569,554)	
Among newly notified : (Japan)	
Foreign borns	5 7.6% (7.6%)
TB cases with homeless history	0 0.0% (1.0%)
Male aged 35-59, without job and receiving public assistance	0 0.0% (7.7%)

Trends	'12	'13	'14	'15	2016
Notified cases	80	76	87	90	66
Rate per 100,000 population	13.8	13.2	15.2	15.7	11.6
Sputum smear +ve. PTB	24	23	32	34	24
Rate per 100,000 population	4.1	4.0	5.6	5.9	4.2
Latent Tuberculosis Infection	58	19	19	20	20
Rate per 100,000 population	10.0	3.3	3.3	3.5	3.5

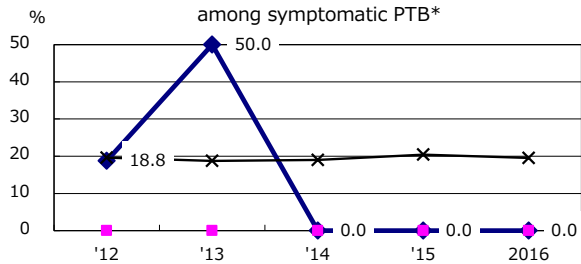
Trends of TB notification rates, all forms and smear +ve.PTB



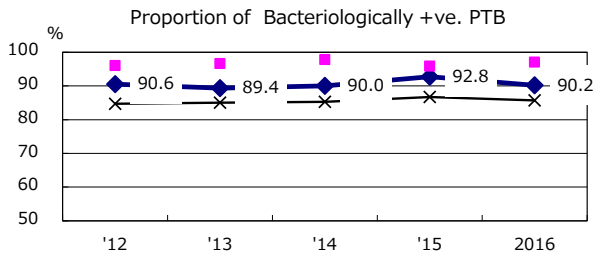
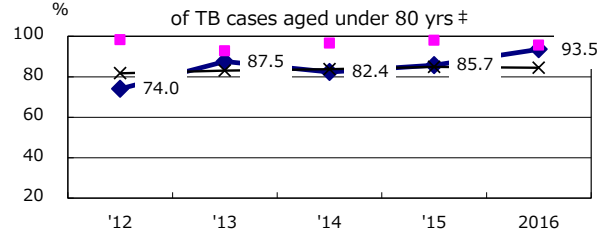
Age-sex composition of notified cases, 2016



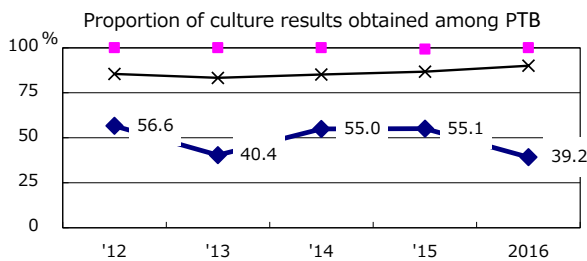
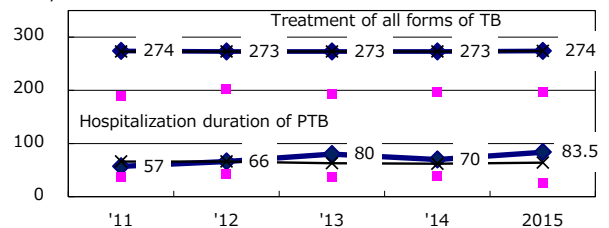
Proportion of cases with total diagnosis delay(> 3 mths) among symptomatic PTB*



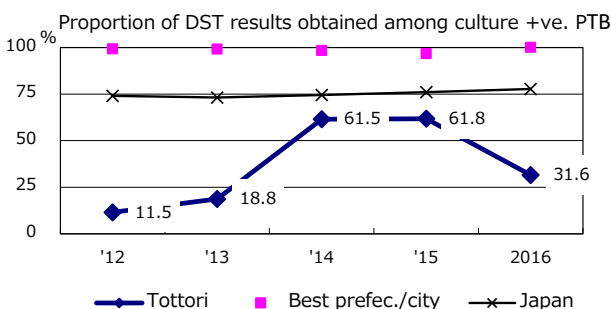
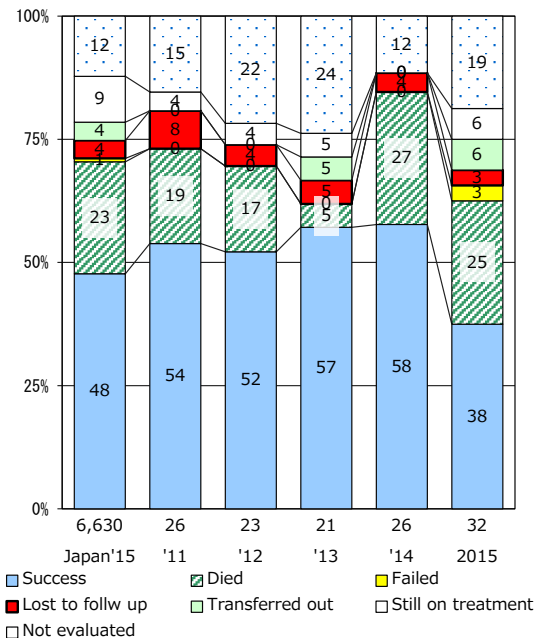
Proportion of TX with HRZ-E/S among all forms of TB cases aged under 80 yrs †



Median duration of treatment of all forms and hospitalization among PTB



Treatment outcomes of new sputum smear +ve.TB



PTB : pulmonary TB

† Excluding unknown delay(%)	'12	'13	'14	'15	2016
	51.5	81.8	97.6	97.7	92.6

‡ Excluding unknown Tx(%)	'12	'13	'14	'15	2016
	0.0	4.8	5.6	0.0	6.1