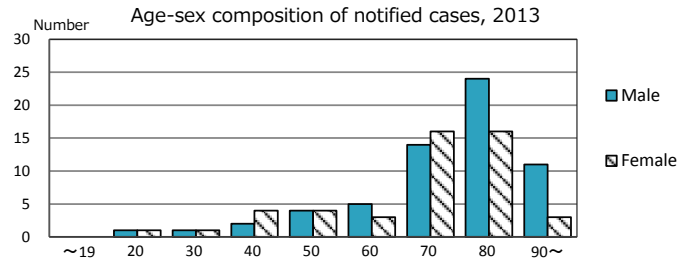
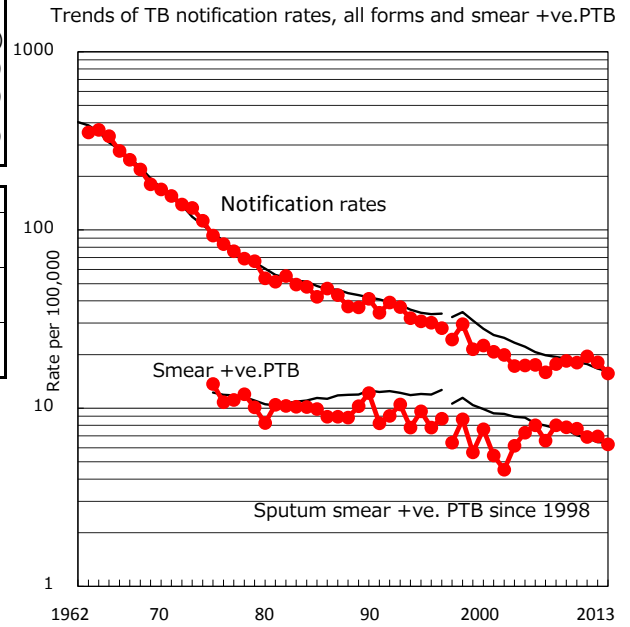
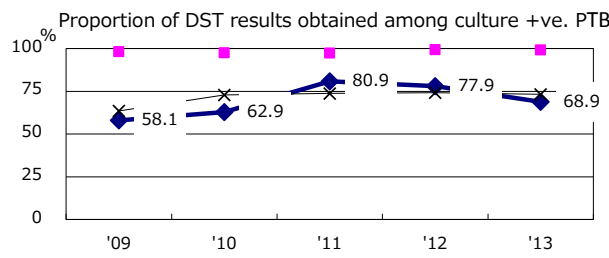
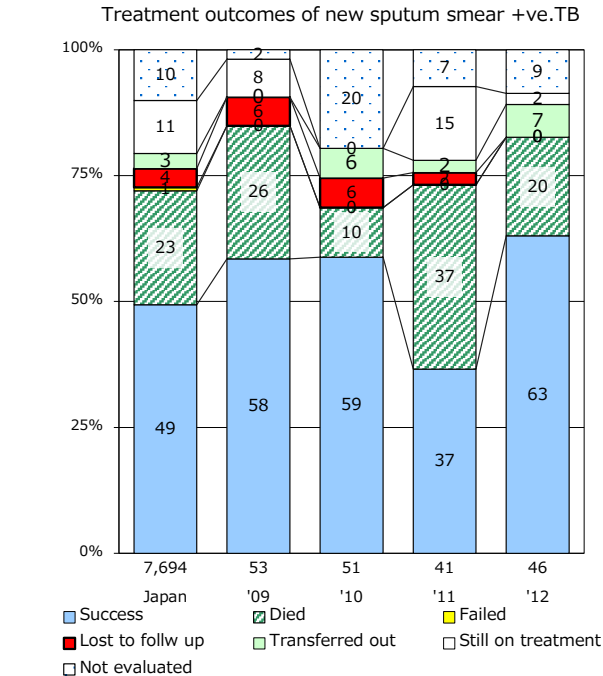
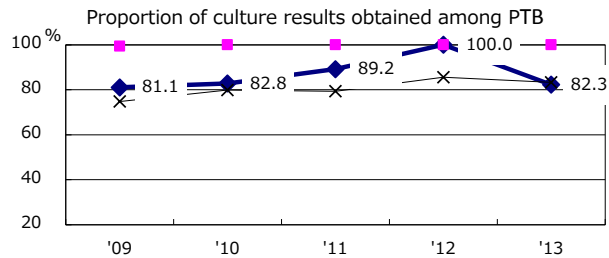
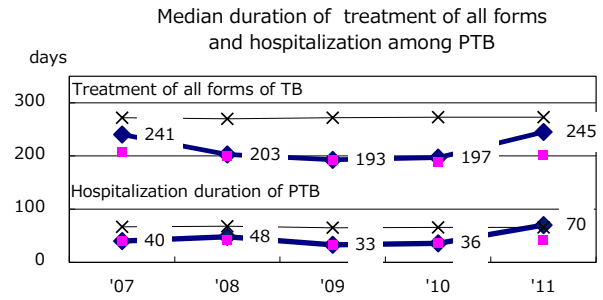
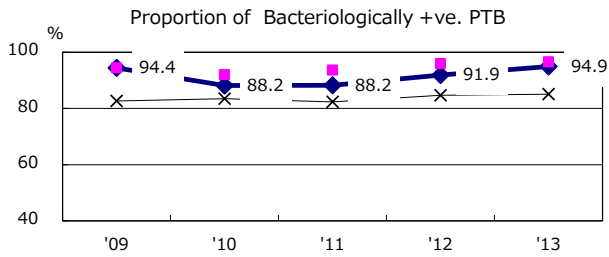
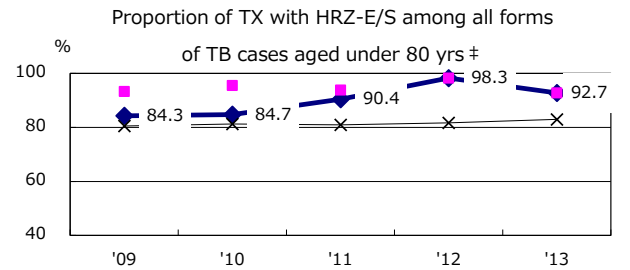
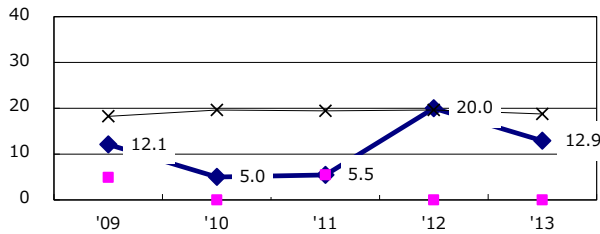


TB statistics in 2013 ( Population in Shimane 701,995 )	
Among newly registered : (Japan)	
Foreign borns	3 2.7% (5.0%)
TB cases with homeless history	1 0.9% (1.6%)
Male aged 35-59, without job and receiving public assistance	0 0.0% (10.8%)

Trends	'09	'10	'11	'12	'13
Notified cases	132	129	139	128	110
Rate per 100,000 population	18.4	18.0	19.5	18.1	15.7
Sputum smear +ve. pul.cases	56	55	49	49	44
Rate per 100,000 population	7.8	7.7	6.9	6.9	6.3
Latent Tuberculosis Infection	32	30	129	115	28
Rate per 100,000 population	4.5	4.2	18.1	16.3	4.0



Proportion of cases with total diagnosis delay (> 3 mths) among symptomatic PTB



PTB : pumonyary TB

† Excluding unknown delay(%)	'09	'10	'11	'12	'13
	53.5	48.1	26.7	54.5	50.0

‡ Excluding unknown Tx(%)	'09	'10	'11	'12	'13
	5.4	2.7	0.0	1.7	1.8