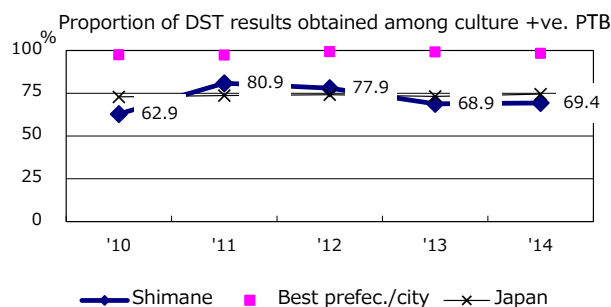
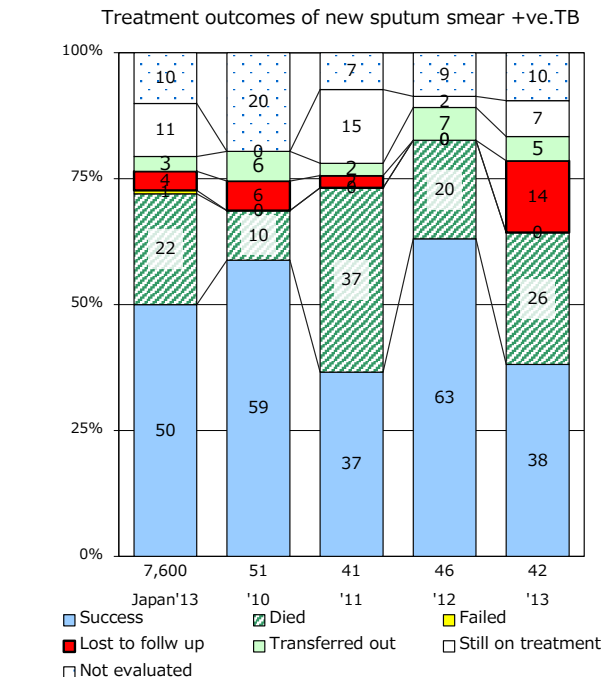
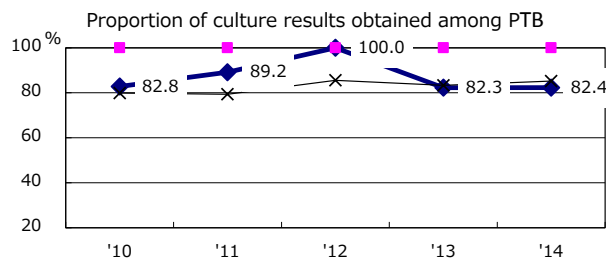
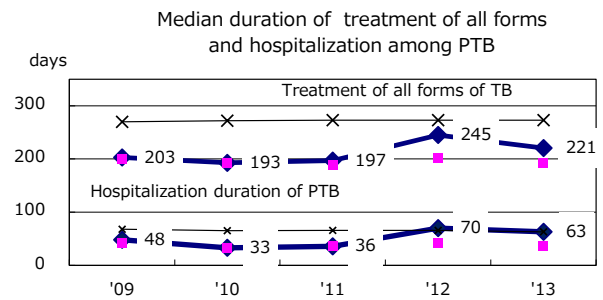
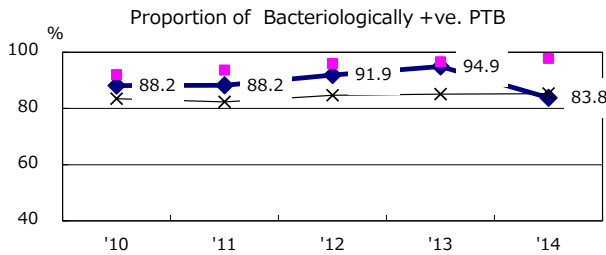
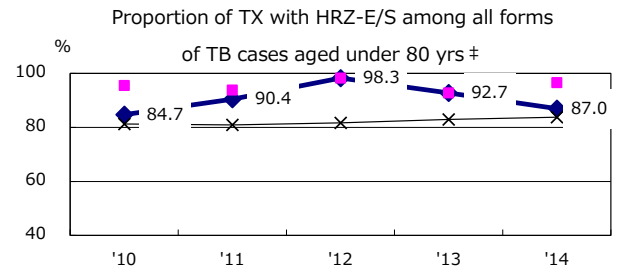
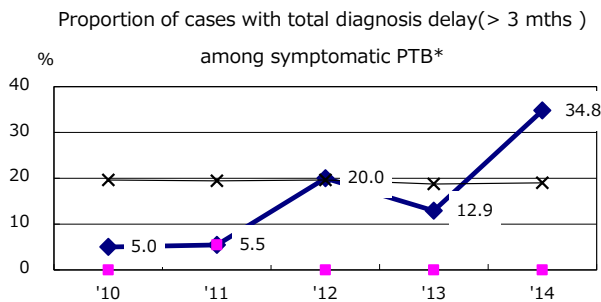
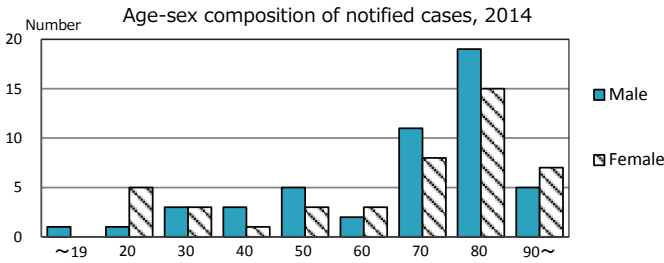
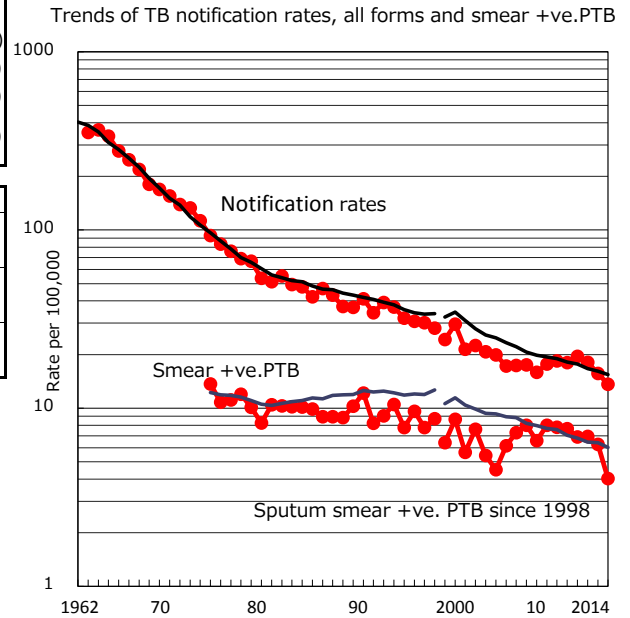


TB statistics in 2014 (Population in Shimane 696,516)	
Among newly registered : (Japan)	
Foreign borns	5 5.3% (5.6%)
TB cases with homeless history	0 0.0% (1.1%)
Male aged 35-59, without job and receiving public assistance	0 0.0% (8.0%)

Trends	'10	'11	'12	'13	'14
Notified cases	129	139	128	110	95
Rate per 100,000 population	18.0	19.5	18.1	15.7	13.6
Sputum smear +ve. pul.cases	55	49	49	44	28
Rate per 100,000 population	7.7	6.9	6.9	6.3	4.0
Latent Tuberculosis Infection	30	129	115	28	56
Rate per 100,000 population	4.2	18.1	16.3	4.0	8.0



PTB : pumonyary TB					
† Excluding unknown delay(%)	'10	'11	'12	'13	'14
	48.1	26.7	54.5	50.0	55.8
‡ Excluding unknown Tx(%)	'10	'11	'12	'13	'14
	2.7	0.0	1.7	1.8	6.1