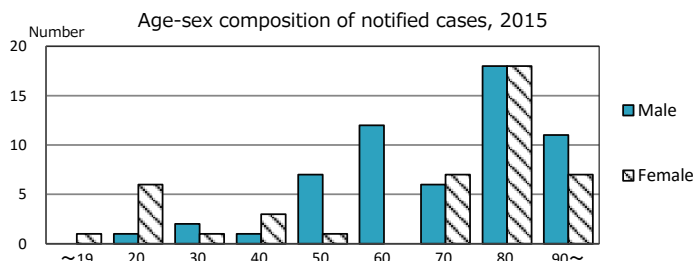
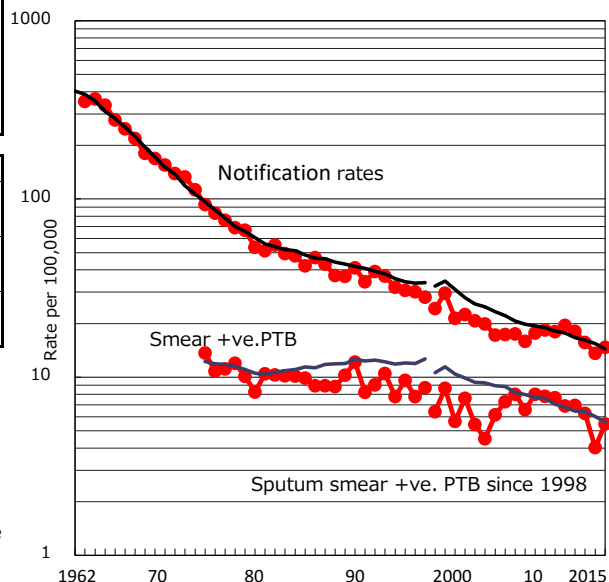


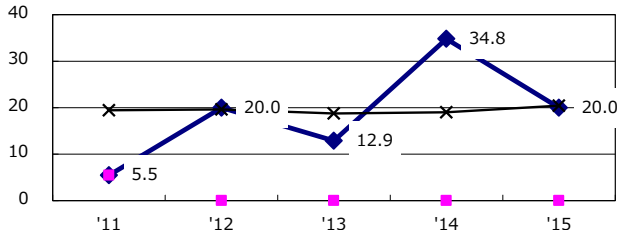
TB statistics in 2015 (Population in Shimane 694,188)	
Among newly notified :	(Japan)
Foreign borns	10 9.8% (6.4%)
TB cases with homeless history	0 0.0% (0.9%)
Male aged 35-59, without job and receiving public assistance	0 0.0% (9.0%)

Trends	'11	'12	'13	'14	'15
Notified cases	139	128	110	95	102
Rate per 100,000 population	19.5	18.1	15.7	13.6	14.7
Sputum smear +ve. PTB	49	49	44	28	38
Rate per 100,000 population	6.9	6.9	6.3	4.0	5.5
Latent Tuberculosis Infection	129	115	28	56	27
Rate per 100,000 population	18.1	16.3	4.0	8.0	3.9

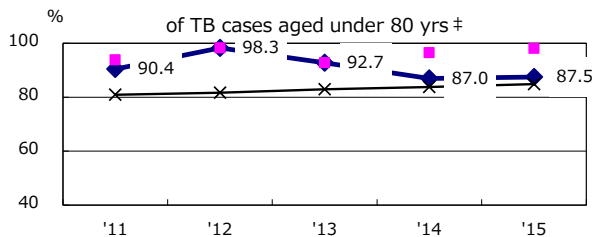
Trends of TB notification rates, all forms and smear +ve.PTB



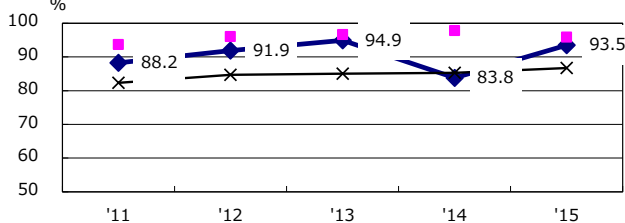
Proportion of cases with total diagnosis delay (> 3 mths) among symptomatic PTB*



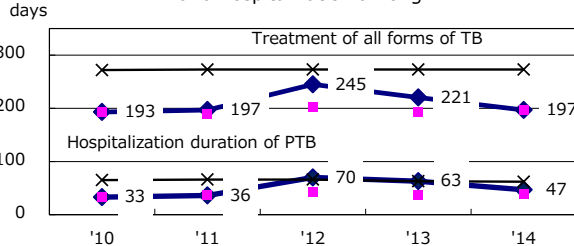
Proportion of TX with HRZ-E/S among all forms of TB cases aged under 80 yrs †



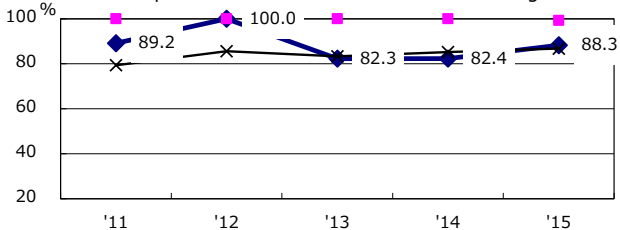
Proportion of Bacteriologically +ve. PTB



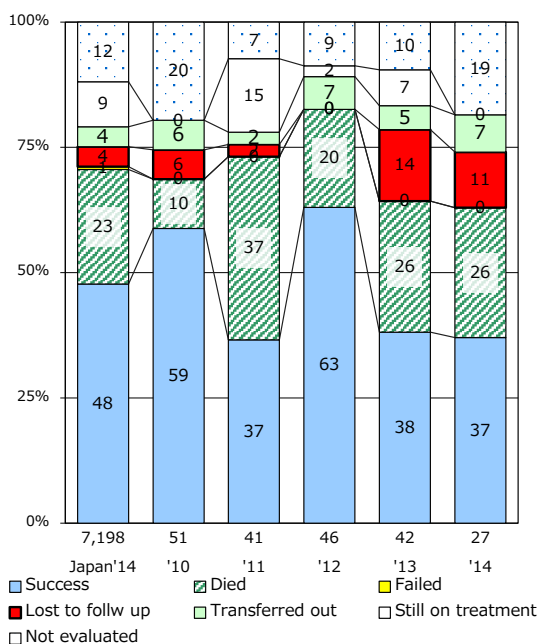
Median duration of treatment of all forms and hospitalization among PTB



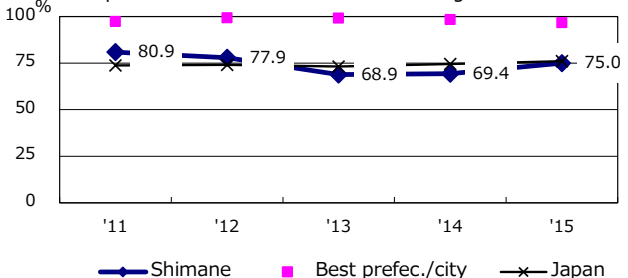
Proportion of culture results obtained among PTB



Treatment outcomes of new sputum smear +ve.TB



Proportion of DST results obtained among culture +ve. PTB



PTB : pulmonary TB

† Excluding unknown delay(%)	'11	'12	'13	'14	'15
	26.7	54.5	50.0	55.8	62.1

‡ Excluding unknown Tx(%)	'11	'12	'13	'14	'15
	0.0	1.7	1.8	6.1	0.0