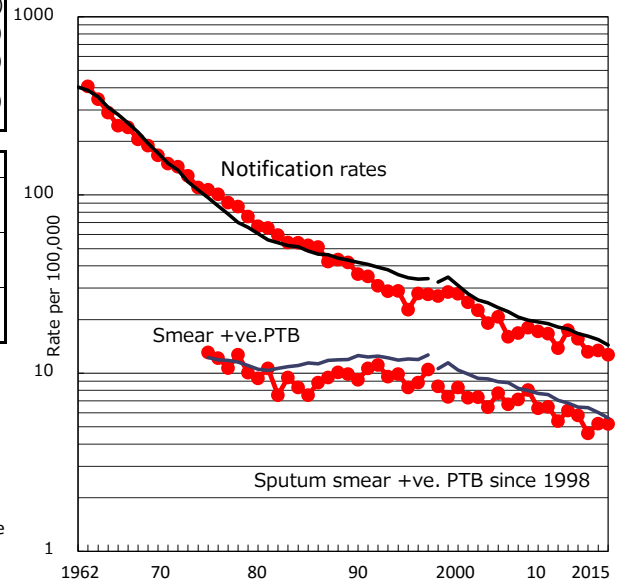


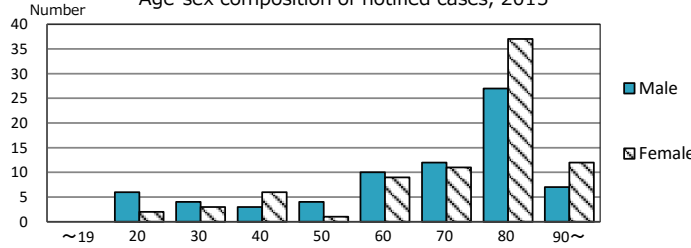
| | | | |
|--|----|------------------------|------------|
| TB statistics in 2015 | | (Population in Okayama | 1,214,709) |
| Among newly notified : | | (Japan) | |
| Foreign borns | 12 | 7.8% | (6.4%) |
| TB cases with homeless history | 1 | 0.6% | (0.9%) |
| Male aged 35-59, without job and receiving public assistance | 0 | 0.0% | (9.0%) |

| Trends | '11 | '12 | '13 | '14 | '15 |
|-------------------------------|------|------|------|------|------|
| Notified cases | 214 | 191 | 160 | 162 | 154 |
| Rate per 100,000 population | 17.4 | 15.6 | 13.2 | 13.4 | 12.7 |
| Sputum smear +ve. PTB | 76 | 71 | 56 | 63 | 63 |
| Rate per 100,000 population | 6.2 | 5.8 | 4.6 | 5.2 | 5.2 |
| Latent Tuberculosis Infection | 105 | 112 | 60 | 59 | 65 |
| Rate per 100,000 population | 8.5 | 9.2 | 4.9 | 4.9 | 5.4 |

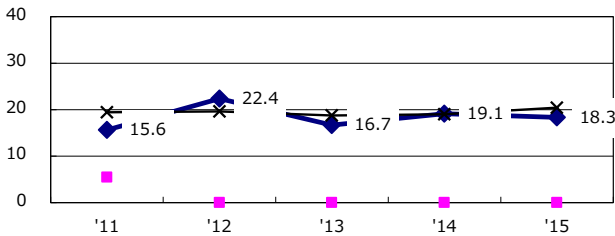
Trends of TB notification rates, all forms and smear +ve. PTB



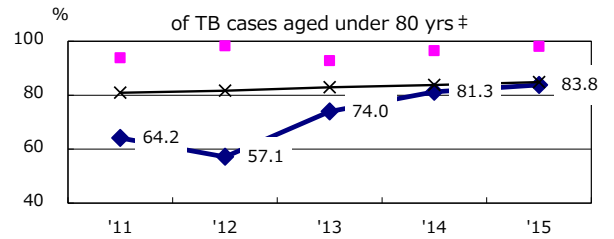
Age-sex composition of notified cases, 2015



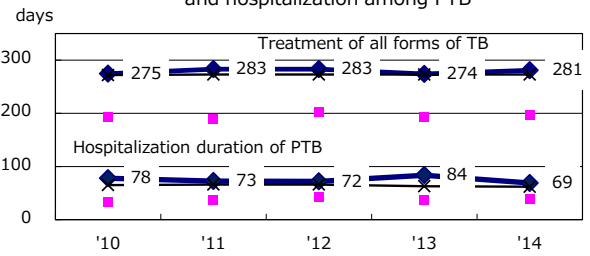
Proportion of cases with total diagnosis delay (> 3 mths) among symptomatic PTB*



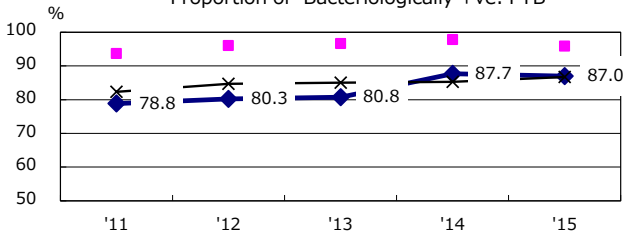
Proportion of TX with HRZ-E/S among all forms of TB cases aged under 80 yrs †



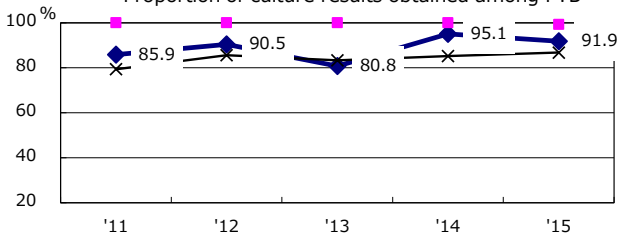
Median duration of treatment of all forms and hospitalization among PTB



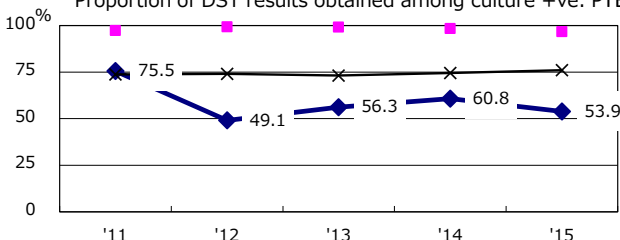
Proportion of Bacteriologically +ve. PTB



Proportion of culture results obtained among PTB



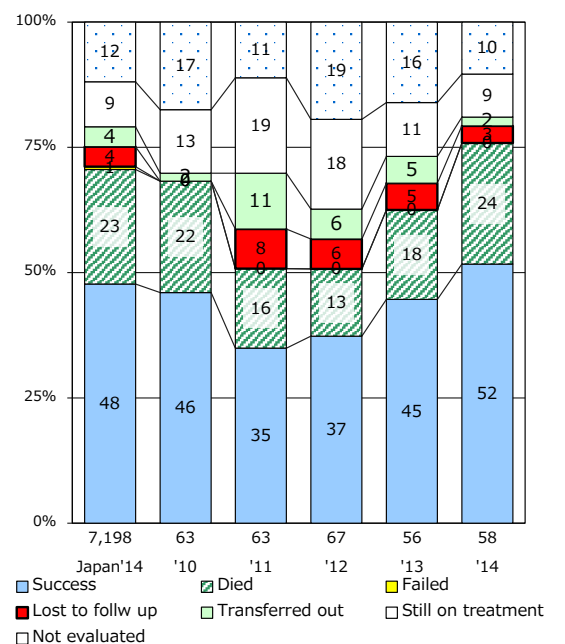
Proportion of DST results obtained among culture +ve. PTB



—◆— Okayama ■ Best prefec./city —×— Japan

PTB : pulmonary TB

Treatment outcomes of new sputum smear +ve. TB



| | | | | | |
|------------------------------|------|------|------|------|------|
| † Excluding unknown delay(%) | '11 | '12 | '13 | '14 | '15 |
| | 18.6 | 30.9 | 42.6 | 27.7 | 26.0 |

| | | | | | |
|---------------------------|-----|-----|-----|-----|-----|
| ‡ Excluding unknown Tx(%) | '11 | '12 | '13 | '14 | '15 |
| | 3.2 | 1.9 | 3.8 | 4.8 | 4.2 |